



Haramaya University

Facts & Figures 2016/17

www.haramaya.edu.et



Haramaya University

Facts and Figures 2016/17

Prepared By: Strategic Planning, Monitoring and Evaluation Directorate

www.haramaya.edu.et

SPMED@haramaya.edu.et

TABLE OF CONTENTS

1. HISTORICAL BACKGROUND OF THE UNIVERSITY	1
2. MAJOR ACHIEVEMENTS OF THE STRATEGIC PLAN	4
3. ORGANIZATIONAL STRUCTURE OF HARAMAYA UNIVERSITY	5
4. ACADEMIC UNITS OF THE UNIVERSITY	7
4.1. SUMMARY OF ACADEMIC PROGRAMS	9
4.1.1. Regular Academic Programs	9
4.1.2. Non-Regular Academic Programs	14
5. ADMISSION	16
5.1. ADMISSIONS TO UNDERGRADUATE PROGRAMS	17
5.1.1. Admission to Regular Undergraduate Programs.	17
5.1.2. Admission as Part-time Students.	17
5.1.3. Special Admission.	18
5.1.4. Admission to the continuing and distance education programs.	18
5.2. ADMISSIONS TO GRADUATE PROGRAMS	20
5.2.1. Admission to Regular Graduate (Masters and PhD) Programs	21
5.2.2. Admissions to Continuing, Distance & Summer Education Graduate Programs	22
6. STUDENTS' ENROLLMENT	22
6.1. REGULAR STUDENTS' ENROLLMENT	23
6.1.1. Regular Undergraduates Enrollment	23
6.1.2. Regular Postgraduates Enrollment	25
6.2. NON-REGULAR STUDENTS' ENROLLMENT	27
6.2.1. Non-Regular Undergraduate Enrollment	27
6.2.2. Non Regular Postgraduate Enrollment	28
7. GRADUATION STATISTICS	28
8. STAFF OF THE UNIVERSITY	30
8.1. LOCAL ACADEMIC STAFF OF THE UNIVERSITY (ON DUTY ONLY)	30
8.2. LOCAL ACADEMIC STAFF OF THE UNIVERSITY ON STUDY LEAVE	31
8.3. EXPATRIATE ACADEMIC STAFF OF THE UNIVERSITY	31
8.4. ACADEMIC STAFFS' PROMOTION	32
8.5. ADMINISTRATIVE STAFF PROFILE	32
9. HU IN RESEARCH	33
10. HU IN COMMUNITY SERVICE	37
11. ADMINISTRATIVE GUIDELINES	39
12. HU'S CURRENT PARTNERSHIP AND NETWORKING	40
13. SPORT IN HU	42
14. UNIVERSITY FACILITIES	43
14.1. LIBRARY AND INFORMATION SERVICES	46
14.2. HAYU FM COMMUNITY RADIO	58
14.3. ICT SERVICE IN THE UNIVERSITY	58
14.4. INVENTORY OF PHYSICAL INFRASTRUCTURE	59
15. ANNUAL BUDGET FROM GOVERNMENT TREASURY AND ITS UTILIZATION	63

LIST OF TABLES

TABLE 1: Major achievements of Strategic Plan	4
Table 2: Summary of programs offered in 2016/17	9
TABLE 3: Regular Undergraduate Programs Operating Under Different Colleges	9
TABLE 4: Regular Masters Programs	12
TABLE 5: Regular PhD Programs	14
TABLE 6: Specialization in medicine	14
TABLE 7:Non-Regular Undergraduate Academic programs under Different Colleges	15
TABLE 8:Non-Regular Postgraduate Academic Programs under Colleges	16
TABLE 9: Summary of Students’ Enrollment by College and Sex (2016/17)	23
Table 10: Regular CAES Student Enrollment.....	23
Table 11: Regular CNCS Student Enrollment.....	24
Table 12: Regular CSSH Student Enrollment	24
Table 13: Regular CBE Student Enrollments.....	24
Table 14: Regular CHMS Student Enrollment	24
TABLE 15: Regular CCI student enrollment.....	25
TABLE 16: Regular HIT student enrollment	25
TABLE 17: Regular COL student enrollment	25
TABLE 18: Regular CVM student enrollment.....	25
TABLE 19: Regular CEBS student enrollment.....	25
TABLE20: Regular masters programs Enrollment.....	25
TABLE21: PhD programs Enrollment	27
TABLE 22: DEP Students Enrollment.....	27
TABLE 23: CEP student’s enrollment	27
TABLE 24: SEP Students enrollment	27
TABLE 25: CEP postgraduate enrollment	28
TABLE 26: Summer postgraduate enrollment	28
TABLE 27: Number of students graduated in 2016/17	29
TABLE 28: Local Academic Staff of the University (on duty only) (2016/17)	30
TABLE 29: Local Academic Staff of the University on Study Leave (2016/17)	31
TABLE 30: Expatriate Academic Staff of the University (2016/17)	31
TABLE 31: Promoted Academic Staff of the University (2016/17)	32
TABLE 32: Number of Permanently Employed Administrative Staffs(2016/17)	32

TABLE 33. Crop varieties released in 2016/17	34
TABLE 34 externally funded projects focus areas, total and annual operating cost	34
TABLE 35: Research Stations and their major activities.....	35
TABLE 36: Types of technologies disseminated in 2016/17	35
TABLE 37: Farmers training centers (FTCs) that are used for technology disseminations.....	35
TABLE 38: University journals published in the year 2016/17	36
TABLE 39: Types of free legal services of HU and number of beneficiaries in 2016/17	38
TABLE 40: training given in 2016/17	38
TABLE 41: Collaborations with foreign university	40
TABLE 42: Seat Capacity and Internet Access.....	47
TABLE 43: some of ICT facilities available in HU.....	59
TABLE 44: PhD Hostels	59
TABLE 45: Laboratories	59
TABLE 46: Classrooms& offices (Main campus)	60
TABLE 47: Dormitories in the main campus	60
TABLE 48: Staff residences (Apartment blocks)	61
TABLE 49: Staff residences (Villas)	61
TABLE 50: Offices (in different places)	61
TABLE 51: Other small Resident structures	61
TABLE 52: Infrastructures in HiwotFana Hospital	61
TABLE 53: Buildings in Chiro Campus.....	61
TABLE 54: Additional buildings in Harar Campus	62
TABLE 55: Clinic	62
TABLE 56: Other Building.....	62
TABLE 57: Annual budget from the government treasury and its utilization in 2016/17	63

LIST OF ABBREVIATIONS AND ACRONYMS

APC	ADMISSION AND PLACEMENT COMMITTEE
ASQAC	ACADEMIC STANDARD AND QUALITY ASSURANCE COMMITTEE
AU	ALEMAYA UNIVERSITY
B.SC	BACHELOR OF SCIENCE
BA	BACHELOR OF ART
CAES	COLLEGE OF AGRICULTURE AND ENVIRONMENTAL SCIENCE
CBE	COLLEGE OF BUSINESS AND ECONOMICS
CCDE	COLLEGE OF CONTINUOUS AND DISTANCE EDUCATION
CCI	COLLEGE OF COMPUTING AND INFORMATICS
CEBS	COLLEGE OF EDUCATION AND BEHAVIORAL SCIENCES
CEP	CONTINUING EDUCATION PROGRAM
CGS	COUNCIL OF GRADUATE STUDIES
CHMS	COLLEGE OF HEALTH & MEDICAL SCIENCE
CNCS	COLLEGE OF NATURAL AND COMPUTATIONAL SCIENCES
COC	CERTIFICATE OF COMPETENCY
COL	COLLEGE OF LAW
CSSH	COLLEGE OF SOCIAL SCIENCES & HUMANITIES
CVM	COLLEGE OF VETERINARY MEDICINE
DEP	DISTANCE EDUCATION PROGRAM
DVM	DOCTOR OF VETERINARY MEDICINE
EIAR	ETHIOPIAN INSTITUTE OF AGRICULTURAL RESEARCH
FLSC	FREE LEGAL SERVICE CENTER
GPC	GRADUATE PROGRAM COMMITTEE
HIT	HARAMAYA INSTITUTE OF TECHNOLOGY
HU	HARAMAYA UNIVERSITY
IECAMA	IMPERIAL ETHIOPIAN COLLEGE OF AGRICULTURAL AND MECHANICAL ARTS
ILT	INSTITUTE OF LAND TENURE
IPDS	INSTITUTES OF PEACE AND DEVELOPMENT STUDIES
LLB	BACHELOR OF LAW
M.A	MASTER OF ART
M.ED	MASTER OF EDUCATION
M.Sc.	MASTER OF SCIENCE
MPH	MASTER OF PUBLIC HEALTH
PGDT	POST GRADUATES DIPLOMA PROGRAM
RAC	RECRUITMENT AND ADMISSION COMMITTEE
RDAE	RURAL DEVELOPMENT AND AGRICULTURAL EXTENSION
SEP	SUMMER EDUCATION PROGRAM
SGS	SCHOOL OF GRADUATES STUDIES
SSA	SPORT SCIENCE ACADEMY
USAID	UNITED STATES AGENCY FOR INTERNATIONAL DEVELOPMENT

MISSION



The Mission of Haramaya University is to produce competent graduates in diverse fields of study, undertake rigorous, problem solving and cutting edge researches, disseminate knowledge & technologies, and provide demand-driven & transformative community services.

VISION



Haramaya University strives to be one of the leading African Universities with international reputation by 2025.

THEMATIC AREAS

1. Excellence in Learning- Teaching
2. Excellence in Research and Technology Exchange
3. Excellence in Community Engagement
4. Excellence in Administrative service Delivery System

CORPORATE OBJECTIVES

1. Improve customer/stakeholder engagement and satisfaction
2. Improve partnership and networking
3. Increase demand driven academic programmes, research output, products and services
4. Increase postgraduate students
5. Increase revenue and diversify fund sources
6. Improve resource utilization
7. Reduce disparities in participation between disadvantaged groups and others
8. Improve quality of education, research, and community service
9. Foster/encourage entrepreneurial thinking and innovativeness
10. Improve service delivery system
11. Promote academic programmes, research outputs, services, and other achievements
12. Improve staff capacity, attraction, motivation, and retention
13. Expand and modernize facilities

1. HISTORICAL BACKGROUND OF THE UNIVERSITY

Haramaya University has gone through a series of transformations since its establishment as a higher learning institution. The agreement signed between the Imperial Ethiopian Government and the Government of the United States of America on May 15, 1952 laid the foundations for the establishment of Jimma Agricultural and Technical School and the Imperial College of Agricultural and Mechanical Arts (IECAMA). The Agreement between the Government of Ethiopia and the Technical Cooperation Administration of the Government of the United States of America, signed on May 16, 1952, gave the mandate to Oklahoma State University to establish and operate the College, conduct a nationwide system of Agricultural Extension and set up an agricultural research and experimental station.

Based on the Emperor's wish, it was decided to establish the College at its current location at Haramaya. Later on, the agreement signed between the United States Department of States and the Imperial Government provided the basis for the operation of Jimma Agricultural and Technical School that received its first class of eighty students in October 1952. Nineteen of the students graduated on August 6, 1953 and became the first freshman students of the Imperial Ethiopian College of Agricultural and Mechanical Arts (IECAMA). The IECAMA opened its doors to its first batch of students in October 1956 and the senior class moved from Addis Ababa to Alemaya for their final semester. At the end of the 1956/57 academic year, eleven students completed their studies and graduated with a B.Sc. degree in General

Agriculture. The training programs in Agriculture were further specialized and B.Sc. programs were introduced in Animal Sciences (1960), Plant Sciences (1960), Agricultural Engineering (1961) and Agricultural Economics (1962).

Until 1963, the college was virtually dependent on Oklahoma State University, both administratively and academically; however, after 1966, when the first Ethiopian dean was appointed, the role of Americans was limited to advisory and technical support. The College became a chartered member of Addis Ababa University (the then Haile Selassie I University), following the contractual termination of Oklahoma State University in 1968. Consequently, it was named Alemaya College of Agriculture. Due to the great need of trained manpower in other areas of study, additional programs that included a diploma program in Home Economics (1967), Science Teachers' Training Program (1978), and Continuing Education Program (1980) were launched. A major landmark in the history of the College of Agriculture was the launching of graduate study programs in the 1979/80 academic year. This laid the foundation for advanced academic and research work at the institution. When graduate studies were launched, about 29 students were enrolled to study various fields of agriculture.

Another major landmark in the history of Alemaya College of Agriculture was when it was upgraded to university status on May 27, 1985, followed by the launching of the Faculty of Forestry in 1987. It was then named Alemaya University of Agriculture that produced qualified manpower in the fields of Animal Sciences, Plant Sciences, Agricultural Economics, Agricultural

Engineering, Agricultural Extension and Forestry both at graduate and undergraduate levels. Moreover, in the continuing education program, diploma-level training programs were delivered in Accounting and Management, in Dire Dawa and Harar centers.

The university once again went through another phase of transformation during the 1995/96 academic year by launching new programs in the fields of Teacher Education and Health. The opening of the two faculties, namely the Faculty of Education and the Faculty of Health Sciences, further diversified the existing programs, and enabled the institution to become a full-fledged university that was renamed Alemaya University (AU).

In the last two decades, the University has witnessed tremendous expansion in terms of fields of study. In September 2002, two more faculties, namely Faculty of Law and Faculty of Business and Economics, were opened. Furthermore, Faculty of Veterinary Medicine and Faculty of Technology were initiated in 2003 and 2004, respectively to further diversify the training programs of the university. The institution was renamed Haramaya University in February 2006.

The University, apart from undergraduate programs, has been highly engaged in the expansion and diversification of graduate programs. Currently, the previous Faculties were reorganized into nine Colleges, one Academy and one institute namely, College of Agriculture and Environmental Science (CAES), College of Business and Economics (CBE), College of Computing and Informatics (CCI), College of Health and Medical Sciences (CHMS), College of Social Sciences and Humanities (CSSH), College of Law

(COL), College of Veterinary Medicine (CVM), College of Natural and Computational Sciences (CNCS), College of Education, Sport Science Academy (SSA) and Behavioral Sciences (CEBS) and Haramaya Institute of Technology (HIT). In addition, all the graduate programmes and non-regular undergraduate programmes are coordinated by the directorate for postgraduate programmes and directorate for continuing and distance education (CCDE), respectively. Under these divisions, the University offers a total of 255 programmes of which 104 undergraduate programmes, 147 postgraduate programmes (121 second degree and 26 third degree programmes), and 4 Specialization programmes in medical sciences. In addition to academic programmes, the university has launched institutes that cater research and outreach programmes. These include the Institute of Pastoral and Agro-pastoral Studies (IPAS), Institutes of Peace and Development Studies (IPDS), and Institute of Land Tenure (ILT).

The University has been actively involved in research activities, primarily in the fields of agriculture, since its inception. Through the years, HU has established linkages with national and international organizations to strengthen its academic, research and outreach activities. As a pioneer institution of agricultural education, research and extension in Ethiopia for more than six decades, the university has been developing and releasing several improved crop varieties and many improved crop and livestock management practices. HU has produced many textbooks, book chapters, research articles, bulletins, proceedings, posters and a number of PhD dissertations

and master thesis. Even if the research and outreach activities of the university in fields other than agriculture are recent phenomena, encouraging research results are being produced in the areas of health, law, education, business, economics and others. In order to increase the impact of research and outreach activities, the university has grouped its research in to 6 major themes and the outreach activities are being led by the community service road map.

Formerly, the University was functioning on three campus premises. The main campus, where the first milestone was laid, is Haramaya Campus. This campus is located at about 510 km East of Addis

Ababa, between Dire Dawa and Harar towns. This is the nerve center of the university where the offices of the top management are located. The second Campus is located in Harar Town where College of Health and Medical Sciences and Hiwot Fana Specialized University Teaching Hospital are situated. The third one is Chiro Campus located in Chiro Town, where the College of Agro-industry and Land Resource is found. However, in 2016/17, it has been decided by the Ethiopian Federal Government to upgrade to a separate university namely Oda Bultoum University. Hence, HU is now functioning on two campuses premise

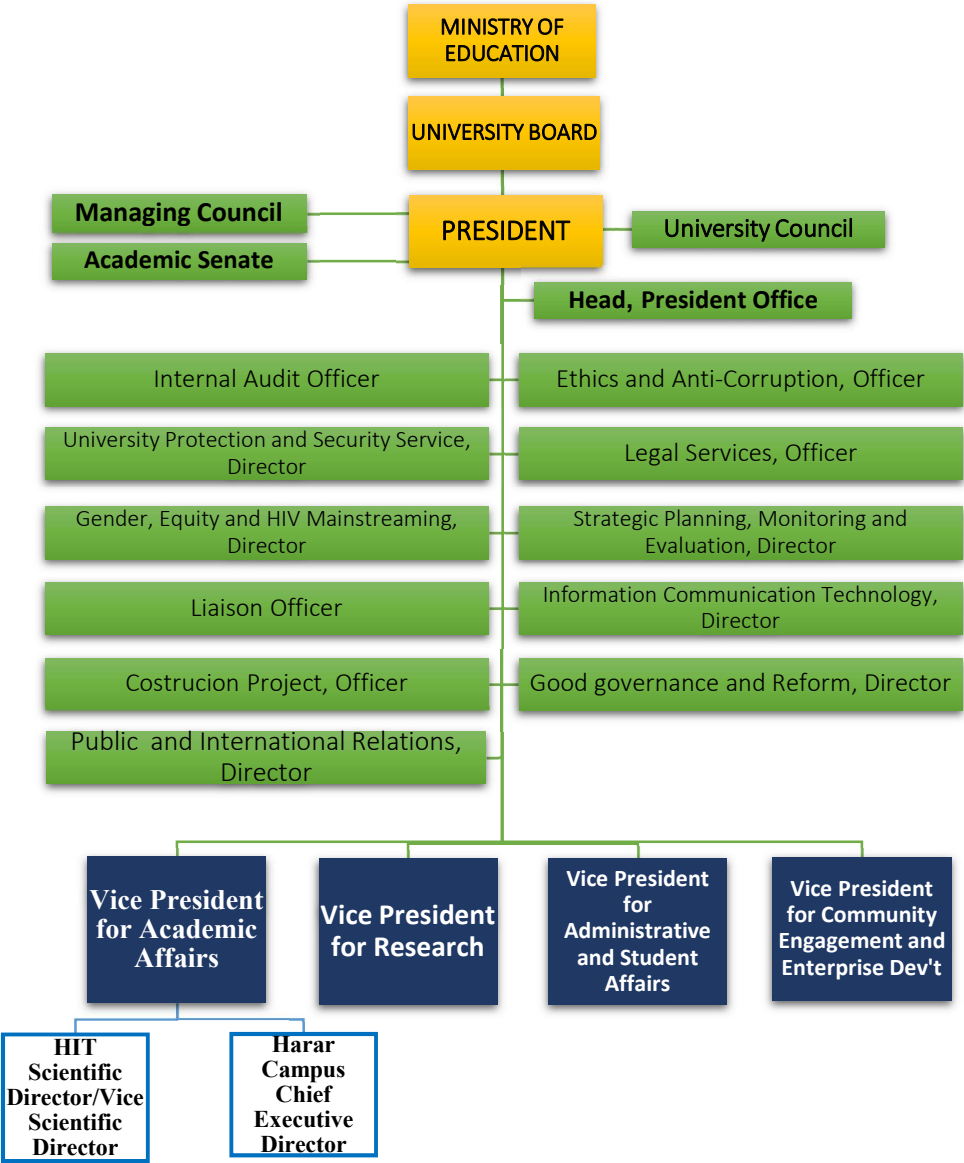
2. MAJOR ACHIEVEMENTS OF THE STRATEGIC PLAN

Haramaya University has successfully designed and is executing its strategic plan which was approved in 2015/16 G.C. In this strategic plan, four strategic themes namely, Excellence in Learning-teaching, Excellence in Research and Technology Exchange, Excellence in Community Engagement and Excellence in Administrative Service Delivery System and 13 corporate level objectives were set. Accordingly, the university now implementing its strategies and got encouraging outcomes. Quantitative data showing the progress of Haramaya University over the previous planning period can be summarized as follows.

TABLE 1: Major achievements of Strategic Plan

Indicator	Measure	2015/16 Achievement	2016/17 Achievement
Total Students' Enrollment	No.	33,555	30,218
Undergraduates Students' Enrollment	No.	29,500	26,289
Postgraduates Students' Enrollment	No.	4,055	3,929
70:30 policy (science and technology to social ,and, human .sciences programs)	ratio	78.7 : 21.3	78□22
Female students' enrollment in undergraduate	%	26.5%	33.52%
Female students' enrollment in postgraduate	%	8%	8.08%
Total Number of Graduates per annum	No.	8,486	8,479
Graduation rate for male	%	98.6%	99.25%
Graduation rate for Female	%	96.6%	96.30%
Graduation rate for total	%	98%	98%
Administrative staff Attrition rate (excluding those staff who retired and dead)	%	4.85	1.72%
Teachers' qualifications mix (first, second and third degrees)	ratio	25:59:16	18. 55 :26
Teacher-student ratio	ratio	1:19	1□17.2
Academic staff (Ethiopian only)	No.	925	916
%age of female teaching staff	%	12.4%	13%
%age of women in management position	%	7.75%	9.1%
Number of beneficiary community members	No.	>600,000	> 900,000
Number of research projects underway	No.	461	493
Reserch output/ technologies transiferd to communites	No.	26	36
Number of Labratories functioning	No.	52	52
All Academic staff (Including Expatriate Staff)	No	1395	1448
Academic staff Attrition rate (excluding those staff who retired & dead)	%	5.6%	4.24%
Administrative staff	NO	5214 (55.4% Female)	4825 (54.8% Female)
Problem solving research projects	No	60	139
Women engagement in research activities	%	10%	10%

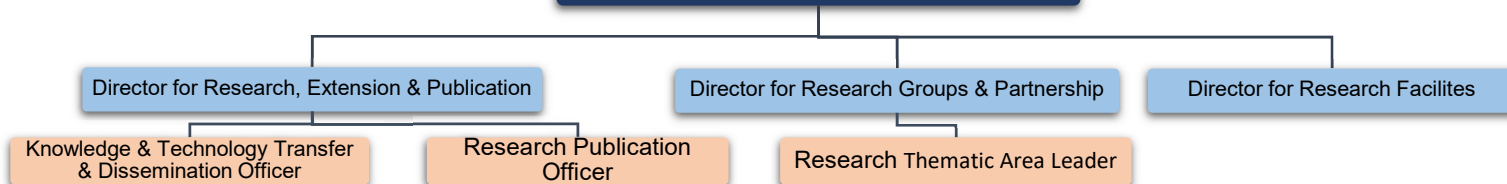
3. ORGANIZATIONAL STRUCTURE OF HARAMAYA UNIVERSITY



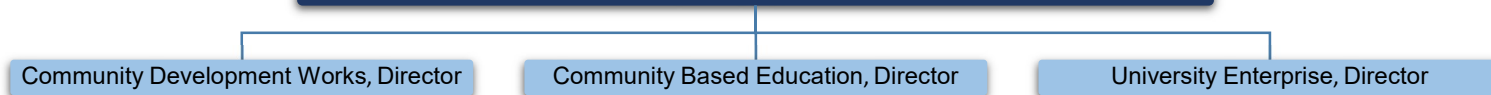
Vice President for Academic Affairs



Vice President for Research



Vice President for Community Engagement & Enterprise Development



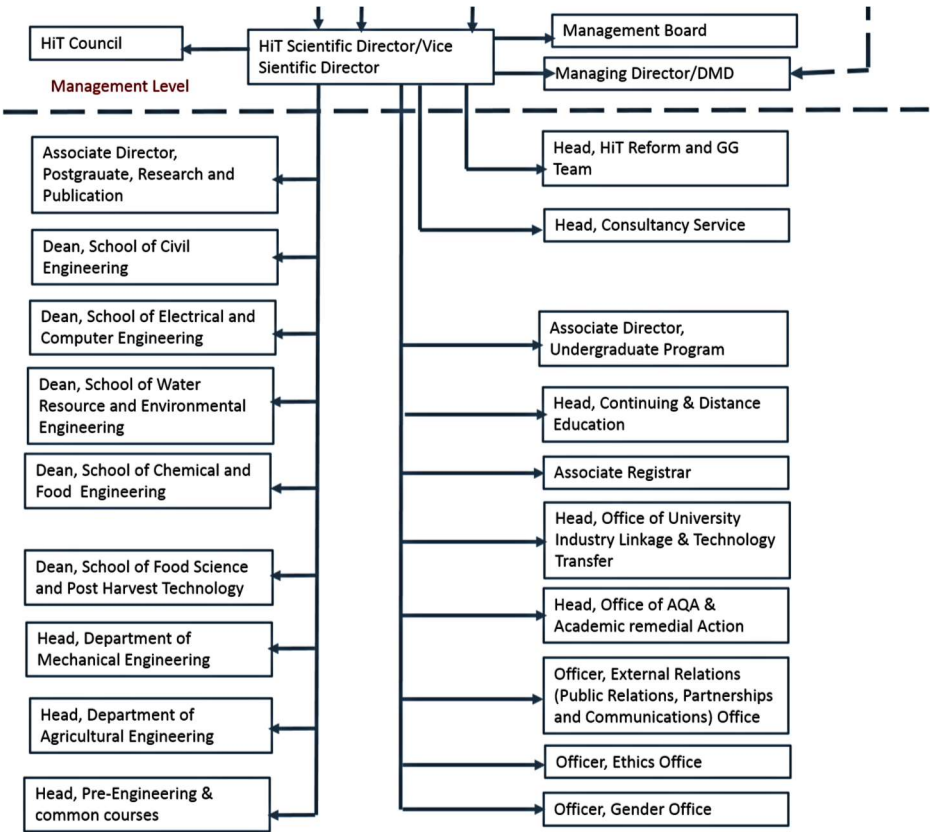
Vice President for Administrative & Student Affairs



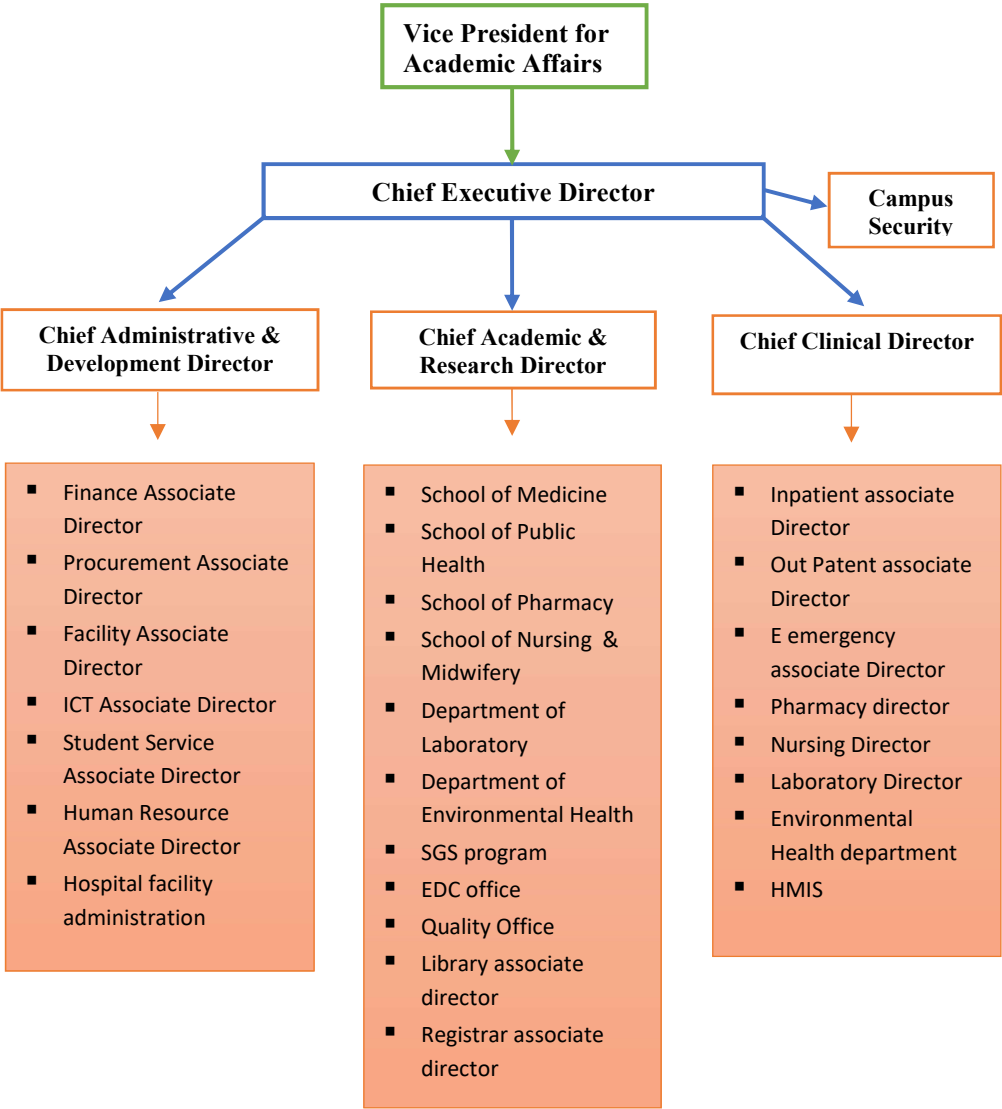
3.1. RECENTLLY APPROVED STRUCTURES

In Addition to those structures, HU has designed a new structure for Haramaya Institute of Technology and College of Health and Medical Science so as to give them special autonomy in order to meet government policy and strategy. Generally, the organizational make-up of the institute and college are drawn here in the hierarchical block diagram.

3.1.1. Haramaya Institute of Technology’s Organogram



3.1.2. HU Health and Medical Sciences College’s Organogram



4. ACADEMIC UNITS OF THE UNIVERSITY

4.1. SUMMARY OF ACADEMIC PROGRAMS

In 2016/17 Academic year, the University ran different programs at PhD, M.Sc./M.Ed./Mph, B.Sc./BA/DVM/LLB levels. The following table shows the number of academic programs offered under different Colleges/Institute in 2016/17.

TABLE 2: Summary of programs offered in 2016/17

Program	undergraduate programs	postgraduate programs		Specialization programs	Total
		Masters	PhD		
Regular	74	89	26	4	189
CEP	9	8	-	-	17
Summer	18	24	-	-	42
Distance	3	-	-	-	3

In addition to these programs, HU offers 5 Postgraduate Diploma/Certificate (Both in regular and summer). Moreover, HU has one English Language improvement.

4.1.1. Regular Academic Programs

I. Regular Undergraduate Academic Programs

The academic undergraduate programs offered by regular program in 2016/17 have been listed under different colleges in subsequent tables.

TABLE 3: Regular Undergraduate Programs Operating Under Different Colleges

COLLEGE/ INSTITUTES	SCHOOL/DEPARTMENT	PROGRAM
COLLEGE OF BUSINESS & ECONOMICS	Department of Accounting	1. Accounting and finance
	Department of Cooperatives	2. Cooperatives (Cooperative Buss. Management & Cooperative Accounting and Auditing)
	Department of Economics	3. Economics
	Department of Management	4. Management
	Department of Public Administration & Development Management	5. Public Administration and Development Management

<i>COLLEGE OF AGRICULTURE & ENVIRONMENTAL SCIENCES</i>	School of Agricultural Economics and Agribusiness	6. Agribusiness & Value Chain Management 7. Agricultural Economics
	School of Animal and Range Science	8. Animal Science 9. Range Ecology & Biodiversity
	School of Natural Resources and Environmental Science	10. Natural Resource Management 11. Environmental Sciences
	Department of Rural Development & Agricultural Extension	12. Rural Development & Agricultural Extension (regular) 13. Rural Development & Agricultural Extension (mid- career)
	School of Plant Sciences	14. Horticultural Crop Production & Processing 15. Sugarcane Agronomy 16. Plant Science
<i>COLLEGE OF COMPUTING & INFORMATICS</i>	Department of Computer Science	17. Computer Sciences
	Department of Information Sciences	18. Information Sciences
<i>COLLEGE OF HEALTH & MEDICAL SCIENCES</i>	School of Information Systems	19. Information Systems
	Department of Information Technology	20. Information Technology
	Department of Software Eng.	21. Software Engineering
	Department of Statistics	22. Statistics
	Department of Environmental Health	23. Environmental Health Science
<i>COLLEGE OF HEALTH & MEDICAL SCIENCES</i>	Department of Medical Laboratory Sci.	24. Medical Laboratory Sciences
	School of Medicine	25. Medicine
	School of Pharmacy	26. Pharmacy (Clinical)
	Department of Public Health	27. Public Health
	School of Nursing and Midwifery	28. Nursing (Neonatal Nursing, Emergency & critical care nursing)
		29. Midwifery (Advance Standing Midwifery)
		30. Midwifery (Regular)
		31. Psychiatric Nursing
		32. Surgical Nursing
		33. Pediatric Nursing
<i>COLLEGE OF SOCIAL SCIENCES & HUMANITIES</i>	School of Foreign Languages and Journalism	34. English Language and Literature
		35. French Language and Literature
		36. Journalism and Mass Communication
	School of Geography and Environmental Science	37. Geo- Information Sciences
		38. Geography and Environmental Studies
	Department of Gender and Development	39. Urban Planning 40. Gender and Development

	Department of History and Heritage Management	41. History & Heritage Management
	Department of Sociology	42. Sociology
	Department of Afan Oromo	43. Afaan Oromo and Literature
	Department of Tourism Development & Hotel Management	44. Tourism Development & Hotel Management
COLLEGE OF LAW	College of Law	45. Law (LLB)
COLLEGE OF VETERINARY MEDICINE	Department of Veterinary Medicine	46. Veterinary Medicine (DVM)
		47. Veterinary Laboratory Technology
COLLEGE OF NATURAL & COMPUTATIONAL SCIENCES	Department of Biology	48. Biology
		49. Molecular Biology & Biotechnology (<i>New</i>)
	Department of Chemistry	50. Chemistry
	Department of Mathematics	51. Mathematics
	Department of Physics	52. Physics
SPORT SCIENCE ACADEMY	Department of Sport Sciences	53. Sport Sciences
HARAMAYA INSTITUTE OF TECHNOLOGY	School of Natural Resource and Environmental Eng.	54. Agricultural Eng.
		55. Water Resources & Irrigation Eng.
		56. Water Supply & Environmental Eng.
		57. Hydraulics and Water Resource Eng.
	Department of Food Science and Post-Harvest Technology	58. Food Science and Post-Harvest Technology
		59. Food Technology and Process Eng.
	Department of Chemical Eng.	60. Chemical Eng.
	Department of Civil Engineering	61. Civil Eng.
	Department of Electrical and Computer Eng.	62. Electrical and Computer Eng.
	Department of Mechanical Eng.	63. Mechanical Eng.

COLLEGE OF EDUCATION & BEHAVIORAL SCIENCE	Department of Adult Education & Community Development	64. Adult Education & Community Development
	Department of Educational Planning & Management	65. Educational Planning & Management
	Department of Psychology	66. Psychology
	Department of Special Needs & Inclusive Education	67. Special Needs & Inclusive Education
	Postgraduate Diploma Program	<ul style="list-style-type: none"> a. Postgraduate Diploma in Secondary School Teaching (PGDT) b. Postgraduate Diploma in School Leadership (PGDSL) c. Postgraduate Certificate in Primary School Supervision d. Higher Diploma Program (HDP) e. Postgraduate Diploma in Higher Education Teaching (PGDHET) English Language Improvement Center (ELIC)
	Other Programs	
*COLLEGE OF AGRO INDUSTRY & LAND RESOURCES	Department of land administration	68. Land Administration
	Department of Dairy & Meat Technology	69. Dairy & Meat Technology
	Department of Forest Resource management	70. Forest Resource Management
	Department of Soil Res. & Watershed Management	71. Soil Resources and Watershed Management
	Department of Animal Science	DA Upgrading 72. Animal Science
	Department of Plant science	73. Plant Science
	Department of Natural Resource management	74. Natural Resource Management

** This is an independent campus in Oda Bultum University. In this campus, students (3rd year and above) are still under the auspicious of Haramaya University.*

II. Regular postgraduate Academic Programs

a) Regular masters programs

TABLE 4: Regular Masters Programs

No.	Program	
College of Agriculture & Environmental Science		
1.	Agribusiness & Value Chain Management (MSc)	9. Agronomy (MSc)
2.	Agricultural & Applied Economics(MSc)	10. Animal Genetics & Breeding (MSc)
3.	Agricultural & Food Marketing (MSc)	11. Animal Nutrition (MSc)
4.	Agricultural Economics (MSc)	12. Animal Production (MSc)
5.	Agricultural Economics & Rural Development (MSc)	13. Dairy Science (MSc)
6.	Agricultural Entomology (MSc)	14. Dairy Technology (MSc)
7.	Agro Meteorology and Natural Risk Management (MSc)	15. Environmental Science Management (MSc)
8.	Agro-forestry (MSc)	16. Horticulture (MSc)
		17. Integrated Pest Management (MSc)
		18. Irrigation Agronomy (MSc)
		19. Plant Breeding (MSc)
		20. Plant Pathology (MSc)
		21. Range Ecology and Biodiversity (MSc)
		22. Rural Development & Agricultural Extension (MSc) (Agricultural Communication & Innovation for Development, Agricultural Information and Communication Management, and Rural Development)

-
23. Seed Science & Technology (MSc)
 24. Soil Sciences (MSc)
 25. Weed Science (MSc)

Haramaya Institute of Technology

26. Agricultural Machinery (MSc)
27. Agricultural Mechanization (MSc)
28. Engineering Hydrology (New)
29. Food Engineering(MSc)
30. Food Sciences and Technology (MSc)
31. Irrigation Engineering (MSc)
32. Postharvest Technology(MSc)
33. Soil & Water Conservation Eng. (MSc)

College of Natural and Computational Sciences

34. Applied Biology (MSc)
35. Biology Education(MEd)
36. Biology(MSc.)
37. Biotechnology(MSc)
38. Botany (MSc)
39. Genetics(MSc)
40. Microbiology (MSc)
41. Chemistry (Organic; Inorganic; Physical; and Analytical streams) (MSc)
42. Chemistry Education(MEd)
43. Chemistry (MSc)
44. Mathematics (Differential Equation, Numerical Analysis, & Optimization) (MSc)
45. Mathematics Education(MEd)
46. Mathematics (MSc)
47. Physics (Environmental Physics, Quantum Physics, Computational Physics, Nano Scale Physics and Medical Physics) (MSc)
48. Physics Education (MEd)
49. Physics (MSc)

Sport Science Academy

50. Coaching Science & Rehabilitation Therapy (MSc)
51. Sport sciences(MSc)
52. Sport Medicine (MSc)
53. Sport Nutrition (MSc)
54. Exercise Physiology (New)

College of Computing and Informatics

55. Statistics (Econometrics & Biometrics) (MSc)
56. Information Sciences(MSc)

College of Social Sciences & Humanities

57. Afaan Oromoo (Afaan Oromoo Teaching, Afaan Oromoo Literature, and Applied Linguistic)
 58. Afaan Oromoo (MEd)
 59. English Education (MEd)
-

-
60. Geography Education (MEd)
 61. Geography & Environmental Studies (Environment and Land Resource Management, and Urban and Regional Development Planning) (MA)
 62. History and Heritage Management (MA)
 63. Sociology (MA)
 64. Teaching English as a Foreign Language (MA in TEFL)
 65. Climate Change & Disaster Risk Management (MA)
 66. Peace & Development Studies(MA)
 67. Gender & Development Studies(New)

College of Education & Behavioral Sciences

68. Curriculum Studies (MA) (With Streams in Curriculum and Quality Assurance; Curriculum Evaluation and Research; and Curriculum and Instruction)
69. Educational Leadership (MA)
70. Educational Leadership and Management (MA)
71. School Leadership (MA)
72. Social Psychology (MA)
73. Special Needs and Inclusive Education (MA)
74. Vocational Education Management (MA)
75. Adult Education and Lifelong Learning (MA)

College of Health and Medical Sciences

76. Adult Health Nursing (MSc)
77. Field Epidemiology (MSc)
78. Integrated Emergency and Obstetrics Surgery (MSc)
79. Medical Microbiology (MSc)
80. Public Health- (General Public Health, Reproductive Health, Epidemiology, Health Services Management, Nutrition)
81. Tropical and Infectious Diseases (MSc)
82. Water Supply & Sanitation Management (MSc)
83. Maternity & Neonatal Nursing (MSc)

College of Veterinary Medicine

84. Veterinary Epidemiology (MSc)
85. Veterinary Microbiology (MSc)
86. Veterinary Public Health (MSc)

College of Business and Economics

87. Business Administration(MBA)
88. Energy Economics (MSc)

College of Law

89. International Economics Business Law (LLM)
-

b) Regular PhD Programs

TABLE 5: Regular PhD Programs

No	Program
CAES	
1.	Agricultural Economics
2.	Agricultural Entomology
3.	Agronomy
4.	Animal Genetics and Breeding
5.	Animal Nutrition
6.	Horticulture
7.	Plant Breeding
8.	Plant Pathology
9.	Range Ecology & Dry-land Biodiversity
10.	Rural Development & Agricultural Extension
11.	Soil Science
12.	Tropical Animal Production (Meat, Dairy, and Monogastric streams)
13.	Climate smart Agriculture & Biodiversity conservation
14.	Dairy Technology

CNCS

15. Physics
16. Chemistry
17. Microbiology
18. Enviromental Physics (old and yet, it is not closed by senate council)

CHMS

19. Public Health
20. Medical Microbiology
21. Nursing

HIT

22. Soil & Water Conservation Engineering
23. Irrigation& Drainage Engineering

CSSH

24. Peace & Development Studies
25. Teaching English as a Foreign Language

CEBS

26. Education (curriculum studies, educational leadership & policy study, educational psychology, and inclusive education.)

c) Specialization program

TABLE 6: Specialization in medicine

1. General Surgery Residence Program
2. Gynecology and Obstetrics Residence Program
3. Specialty Training Program in Internal Medicine (new)
4. Specialty Training Program in Pediatrics and Child Health (new)

4.1.2. Non-Regular Academic Programs

In addition to those regular program, the university offer the non-regular educational provisions through continuing, distance, and summer modalities. The university started these activities in early 1981s with few programs and has been expanding in depth, width, and magnitude over time and space. A case in point, Continuing Education Program (CEP) commenced in 1981/82, Distance Education Program (DEP) in 2001/02, Summer Education Program (SEP) in 1997/98G.C, and Non-Regular Postgraduate Program in 2003/04.

I. Non-regular Undergraduate Academic Programs

There are three program modalities in the Non-regular Undergraduate Academic Programs: Continuing Education Program (CEP) (offered at DireDawa, Harar, chelenko, Chiro, Hirna, Gelemso & Haramaya main campus centers); Distance Education Program (DEP) at (offered at Harar, Shashemene, Chiro, Adama, Ambo, Addis Ababa, Asella, Wolayta sodo and Fiche centers; and Summer Education Program (SEP).

Continuing and distance Education directorate is responsible to coordinate non-regular program given at undergraduate level. Some of studies that are given in the regular program could also be offered in the summer program provided that the numbers of students are sufficient enough to run the program. In 2016/17, the following fields of studies have been offered at undergraduate level.

TABLE 7:Non-Regular Undergraduate Academic programs under Different Colleges

College	CEP	Summer	Distance
College of Agriculture &Environmental Sci.	-	1. Plant Sciences	
College of Business and Economics	1. Accounting and finance 2. Economics 3. Management	2. Cooperatives	1. Accounting 2. Economics 3. Management
College of Computing and Informatics	4. Computer Science 5. Software Eng.		-
College of Health and Medical Sciences	6. Nursing 7. Pharmacy	3. Medical Laboratory Sciences 4. Midwifery 5. Nursing	-
College of Social Sciences and Humanities	8. Afan Oromo, literature & communication	6. Afan Oromo, Literature & Communications 7. English Language and Literature 8. Geography &Environmental Studies 9. History & Heritage Management	-
Institute of Technology	9. Civil Engineering	10. Engineering and Technology	-
College of Veterinary Medicine		-	-
College of Natural and Computational Sciences	-	11. Biology 12. Chemistry 13. Mathematics 14. Physics 15. Sport Science	- -
College of Education & Behavioral Sciences	-	16. Educational Planning & Management 17. Special Needs & Inclusive Education 18. Agricultural communication & education Department	-

II. Non-Regular Postgraduate Academic Programs

There are two program modalities in the Non-Regular Postgraduate Academic Programs: Continuing Education Program (CEP) and Summer Education Program (SEP). In addition to Postgraduate Regular Programs, The School of Graduate Studies offer PhD, M.Sc. /M.Ed. and Mph. degrees in summer and continuing education programs. The following fields of specialization are offered at PhD, MSc/Med and Mph levels in these programs

TABLE 8:Non-Regular Postgraduate Academic Programs under Colleges

College	CEP	Summer
College of Agriculture & Environmental Sciences	<ol style="list-style-type: none"> 1. Agricultural Economic 2. Rural development & Agricultural Extension 3. Business administration 	<ol style="list-style-type: none"> 1. Agricultural Economics 2. Animal & Range Science 3. Plant Science 4. History & heritage Management 5. Seed Science & Technology 6. Rural Development & Agricultural Extension (MSc) (Agricultural Communication & Innovation for Development, Agricultural Information and Communication Management, and Rural Development)
Institute of Technology	-	<ol style="list-style-type: none"> 7. Food Science and Technology
Education &Behavioral Science	<ol style="list-style-type: none"> 4. Educational planning &Management 5. Social Psychology 	<ol style="list-style-type: none"> 8. Educational planning & Management 9. Educational Leadership & Management 10. School Leadership 11. Special Needs & Inclusive Education
Social Science and Humanities	<ol style="list-style-type: none"> 6. Sociology 7. Geography &Environmental science 	<ol style="list-style-type: none"> 12. Teaching English as Foreign Language 13. Geography & Environmental Sciences 14. Natural resources& Environmental Engineering. 15. Sociology 16. Afan Oromo Literature & communication
Natural and Computational Sciences	-	<ol style="list-style-type: none"> 17. Biology 18. Biotechnology 19. Chemistry (MSc) 20. Mathematics (MEd) 21. Physics (MEd)
Computing and Informatics	<ol style="list-style-type: none"> 8. Information Sciences 	<ol style="list-style-type: none"> 22. Information Sciences
Veterinary Medicine	-	<ol style="list-style-type: none"> 23. Veterinary Public Health
Health & Medical Sciences	-	<ol style="list-style-type: none"> 24. Public health

5. ADMISSION

5.1. ADMISSIONS TO UNDERGRADUATE PROGRAMS

General Provisions on Admission to Undergraduate Programs

- I. Admission to all regular undergraduate programs are processed according to the University's admission policies and procedures.
- II. Admissions to all undergraduate continuing, summer and distance education programs shall be processed through the Directorate for continuing and distance education programs taking into account the Senate's criteria applicable to it.
- III. Criteria for special admissions to individual programs shall be developed and recommended by college academic commissions and endorsed by Recruitment and Admission Committee (RAC).
- IV. The University may determine special admission procedures for female students, students with disabilities and other disadvantaged groups.
- V. The spouse or children of the University permanent employee, from any public university, can be transferred to and admitted into a study program of the University. However, the field of study will remain as assigned by the Ministry of Education before the transfer affected.

5.1.1. Admission to Regular Undergraduate Programs.

Admission to the regular undergraduate degree programs of the University may be granted by the University to a candidate who fulfils the requirements specified under any one or more of the following three eligibility categories:

I. Admission of Preparatory Education Completes.

Admissions to undergraduate programs of any institution from preparatory schools shall be based on completion of the preparatory program and obtaining the necessary pass marks in the Ethiopian Higher Education Entrance Examination (EHEE)

II. Admission of Students with Foreign Examination Results.

Students with Foreign examination or other examinations of equivalent standard assessed by Recruitment and Admission Committee (RAC), and who passed the University Entrance Examination may be admitted into the University.

III. Admission as Advanced Standing.

Admission to all undergraduate degree programs with advanced standing level is processed through the Directorate for Academic Program Development, and granted by the Recruitment and Admission Committee (RAC) of the University. Given the availability of places, admission shall be on a competitive basis. Eligible applicants for advanced standing are graduates holding diplomas (2 or 3 years of college study) from accredited institutions of higher education may seek admission into the degree program of the University if they have:

- i. A minimum cumulative grade point average (CGPA/CANG) of 2.00 upon graduation;
- ii. A minimum of two years of post-diploma working experience in the intended field of study, where applicable;
- iii. Favorable recommendations from their employers, where applicable; or
- iv. Technical and vocational education and training graduates with pertinent qualifications and who satisfy entrance qualifications assessment set by the Ministry can be admitted; and
- v. Advanced standing admission is granted only during the first semester of each academic year.

5.1.2. Admission as Part-time Students.

- I. Part-time students are permanent University employees who are allowed to attend classes of the regular undergraduate program on a part-time basis for a degree.
- II. Applicants must meet the admission requirements of the University, serve the University for at least two years, and must obtain the approval of the administrative department, or the college they are affiliated to, prior to applying for admission to an academic program.
- III. Final admission must be endorsed by the University Managing Council.
- IV. A part-time student, at his final year, may be allowed to finish his study as a full-time regular student upon approval of the concerned academic units and endorsed by a concerned vice President.

5.1.3. Special Admission.

- I. The University in certain circumstances may admit students jointly with other affiliated universities or institutes. Such admission may be processed at any time of the academic calendar as deemed appropriate. Students may also be admitted to more than one program at the same time. However, criteria for such special admissions to individual programs shall be developed and recommended by SC/DC and endorsed by the Admission and Placement Committee (APC).
- II. A student who has successfully finished a set of particular modules which entitles him to a degree may also pursue other related modules and earn another degree continuously. Details guidelines shall be worked out by Academic Standard and Quality Assurance Committee (ASQAC).
- III. Private applicants who fulfil admission requirements as regular students and produce evidence of financial support

to cover full tuition fees and other expenses may apply for admission into the regular program. However, such admissions should be approved by the APC.

- IV. Under no circumstances private admissions to a regular program may exceed 5% of the total students admitted in such programs.

- V. Other special admission, such as people from disadvantaged areas, physically challenged people, people needing special training etc. may be granted by the decisions of the University.

- VI. Special admissions into some programs may be granted to attract potentially resourceful candidates such as mature students to the regular undergraduate programs provided that:

- They have records of continuous employment for a minimum of 7 (seven) years, their works relate to the field of training to which they seek admission, and have proof of demonstrable achievement in their careers; and
- They pass an entrance examination to be administered by the relevant departments.

- VII. Such admission shall be granted by the University Senate.

5.1.4. Admission to the continuing and distance education programs.

Admission to all undergraduate programs of the College of the Continuing and Distance Education (continuing education, distance education and summer program) is processed by the CCDE in collaboration with the other colleges is granted by RAC.

I. Continuing Education Program

Without any prejudice to directives given by the Ministry of Education, eligible applicants to the continuing education

program of HU may fall into any one of the following four categories.

Preparatory Education Completes

- i. Applicants who have successfully completed ten-plus-two (10+2) preparatory school education;
- ii. Pass the University entrance examination; and
- iii. Sign an agreement to pay tuition and related fees to the University.

Upgrading Applicants

- i. Applicants who have ESLCE result of 2.00 and above;
- ii. Applicants with a diploma (12 + 2 or 10 + 3) and a cumulative grade point average (CGPA/CANG) of 2.00 upon graduation from an accredited higher learning institution of similar program;
- iii. Technical and vocational education and training graduates with pertinent qualifications and who satisfy entrance qualifications assessment set by the Ministry can be admitted;
- iv. Sign an agreement to pay tuition and related fees to the University; and
- v. Successfully passed University entrance examination.

Non-Academic Permanent HU Employees

- i. Applicants who have ESLCE result of 2.00 and above;
- ii. Applicants with a diploma (12 + 2 or 10 + 3) and a cumulative grade point average (CGPA/CANG) of 2.00 or its equivalent upon graduation from an accredited higher learning institution of similar program;
- iii. Technical and vocational education and training graduates with pertinent qualifications and who satisfy entrance qualifications assessment set by the Ministry can be admitted;

iv. Served the University for at least two years;

v. Successfully passed the University Entrance Examination;

vi. Recommended by the concerned University administrative offices, and endorsed by the Managing Council; and

vii. Sign an undertaking to continue to serve the University after graduation.

Transfer

A student who seeks to transfer from other higher learning institutions of equivalent standard and program to the University may be granted admission to CEP if:

- i. He has successfully completed a minimum of one semester of study in an accredited institution of higher learning;
- ii. Provide a certified document from previous higher learning institution;
- iii. Meets the special requirements of the specific college and/or department he wants to join;
- iv. Sign an agreement to pay tuition and related fees to the University; and
- v. Transferable credits shall be determined by the academic commission.

II. Summer Program

Eligible applicants to the Summer Program of the University may fall into any one of the following four categories:

Preparatory Education Completes

This refers to applicants who have successfully completed ten-plus-two (10 + 2) preparatory school education and passed the University Entrance Examination.

Upgrading Applicants

- i. Applicants who have ESLCE result of 2.00 and above;
- ii. Applicants with diploma (10 + 3) and a cumulative grade point average (CGPA/CANG) of 2.00 or its equivalent upon graduation from an accredited Higher Learning Institution;

- iii. Technical and vocational education and training graduates with pertinent qualifications and who satisfy entrance qualifications assessment set by the Ministry can be admitted; and
- iv. Sign an agreement to pay tuition and related fees to the University.

The University Academic Technical Assistances

- i. Served the University for at least two years;
- ii. Successfully passed the University Entrance Examination;
- iii. Recommended by their respective Department and Academic Commission, and endorsed by the Vice President for Academic Affairs;
- iv. Technical and vocational education and training graduates with pertinent qualifications and who satisfy entrance qualifications assessment set by the Ministry can be admitted; and
- v. Sign an undertaking to continue to serve the University after graduation.

III. Distance Education Program.

Eligible applicants to the Distance Education Program of the University may fall into any one of the following three categories.

Preparatory Education Completes.

- i. Applicants who have successfully completed ten-plus-two(10+2) preparatory school education;
- ii. Passed the University entrance examination; and
- iii. Sign an agreement to pay tuition and related fees to the University.

Upgrading Applicants.

- i. Applicants who have ESLCE result of 2.00 and above;
- ii. Applicants with diploma (12 + 2 or 10 + 3) and a cumulative grade point average (CGPA/CANG) of 2.00 or its equivalent upon graduation from an accredited higher learning institution of similar program;
- iii. Technical and vocational education and training graduates with pertinent Qualifications and who satisfy entrance qualifications assessment set by the Ministry can be admitted; and
- iv. Sign an agreement to pay tuition and related fees to the University.

Transfer.

- i. Student who seeks to transfer from other higher learning institutions of equivalent standard and program to the University may be granted admission to the Distance Education Program if:
 - a. He has successfully completed a minimum of one semester of study in an Accredited institution of higher learning with similar academic program;
 - b. produces a certified academic record from previous higher learning institution;
 - c. Meets the special requirements of the specific college or school and/or department he wants to join;
 - d. Sign an agreement to pay tuition and related fees to the University; and
 - e. Transferable credits shall be determined by the respective Academic Commissions.

5.2. ADMISSIONS TO GRADUATE PROGRAMS

General Provisions on Admission to Graduate Programs

I. Admissions to all post-graduate programs shall be processed in accordance with the provisions in this Legislation and the criteria and rules for special admissions to individual graduate programs that shall be developed and recommended by the Graduate Program Committee (GPC) with the consent of department graduate committees and endorsed by the Graduate Program Committee (GPC) and/or the Senate.

II. Colleges with approval of the Graduate Program Committee and endorsement by the Senate may design non-thesis option graduate programs.

III. The Graduate Program Committee (GPC) shall approve admission calendar and number of graduate students to be enrolled in the different programs.

IV. Admission shall take place once in a year in a given program and modality (regular, summer, etc.).

V. A candidate with previous outstanding academic records, professional experience and good recommendations shall be given priority for admission. However, recommendations from the employer would not be required at the University level. Colleges and departments shall have the discretion to request recommendations and determine the weights to be attached to them.

VI. The University may determine special admission procedures for female students, students with disabilities, students from less developed regions, and students from nationalities with low participation in education due regard given to maintaining the standard of excellence of the University.

5.2.1. Admission to Regular Graduate (Masters and PhD) Programs

I. Academic Requirements.

The applicant must have completed the academic requirements for the bachelors' degree, in case of admission to master's programs, or be in possession of a master's degree in case of admission to PhD programs, from the University or any other accredited institution of higher learning. Given the availability of places, admission to the School of Graduate Studies shall be on a competitive and competence basis.

➤ The applicant must satisfactorily pass entrance examination to be administered by the department concerned. Foreign applicants should present academic records equivalent to accredited Ethiopian Higher Learning Institutions and pass entrance examination.

➤ Senior undergraduate students of accredited universities or colleges applying to join the graduate program immediately upon graduation may be allowed to register and/or sit for entrance examinations administered by departments provided their CGPA/CANG and/or major GPA at the end of the first semester of their final year is above 2.50.

➤ The Department Graduate Committee may include additional admission requirements in conformity with University's rules and regulations and upon approval by Graduate Program Committee (GPC).

II. Non-Academic Requirements.

➤ Colleges/schools/departments may, for academic reasons or special requirements of the field of study, set appropriate restrictions such as age limits subject to the approval of the Graduate Program Committee (GPC).

➤ Colleges/school/departments may also set appropriate work experience requirements after obtaining the bachelor's degrees subject to the approval of the Graduate Program Committee (GPC).

➤ Applicants shall be responsible to cover payments of tuition and thesis/dissertation research costs as per internal rules and regulations of the University.

III. Special Admissions.

➤ An applicant who is found deficit in undergraduate and/or graduate courses shall be required to take remedial courses recommended by the respective DGCs.

➤ Any such student who has been recommended to take remedial courses shall be admitted as a special student.

➤ The duration of the student's, stay in the University as a special student shall be determined by the respective DGCs, but shall not exceed one academic year.

➤ A special student who has satisfactorily completed the prescribed remedial courses and passed the entrance examination shall be granted regular graduate student status.

➤ The Registrar shall record separately the results of the examinations in the prescribed remedial courses. These grades may not count towards masters or PhD degree.

➤ The performance of the student in the prescribed remedial courses will not be considered for SGPA and/or CGPA/CANG calculation but will appear on the transcript. Such a student must obtain a cumulative grade point of at least 2.00 in the undergraduate and 3.00 for graduate courses taken, with no F grade.

➤ A special student may, upon permission of the DGC, register for and take graduate level courses for which he is qualified.

➤ An applicant who has successfully completed a semester or more graduate study in another accredited University, and meets the special requirements of the college/department may be admitted to a similar graduate program. Upon admission of such a student, the DGC shall determine the courses from which the student is to be exempted/get credit transferred. Grades for transferred courses shall be used in calculating CGPA/CANG.

5.2.2. Admissions to Continuing, Distance & Summer Education Graduate Programs

I. Admission requirements and procedures set for regular graduate programs are applicable to continuing, distance, and summer education graduate programs.

II. Illegal Admission

Securing or intending to secure admission using forged academic documents and examination results is illegal.

Securing admission by posing oneself as a student to the University system after withdrawal, dropping out or dismissal is illegal.

The discovery of the above leads to immediate and automatic dismissal from the University and liable to other legal actions.

More information on admission and transfer related information can be obtained from the university senate legislation.

6. STUDENTS' ENROLLMENT

In this academic year (2016/17), a total of 30,218 students are undertaking their study in different programs of the university. Of this, 26,289 of them are undergraduate students while the rest 3,929 postgraduate students. About 80% of the regular undergraduate students are enrolled in the fields of in Natural Sciences and Technology. Currently the university has 117 undergraduate and 6 graduate international students coming from different countries.

TABLE 9: Summary of Students’ Enrollment by College and Sex (2016/17)

Degree	Sex		Total
	Male	Female	
Regular Undergraduate Enrollment	11,214	4,937	16,151
CAES	987	631	1,618
CNCS	494	289	783
SSA	81	88	169
CSSH	753	541	1,294
CBE	1,017	423	1,440
CHMS	1863	728	2,591
CCI	1,078	490	1568
HIT	3871	1346	5217
COL	268	84	352
CVM	464	82	546
CEBS	338	235	573
Non-Regular Undergraduate	6,469 (63.8 %)	3,669 (36.2 %)	10,138
Distance Education program	1,126	879	2,005
Continuing Education	1,229	520	1,749
Summer Education program	4,114	2,270	6,384
Regular Postgraduate	1351	208	1,555
Master’s program	1012	187	1,195
PhD program	339	21	360
Non-Regular Postgraduate	2,239	135	2,374
Continuing Education program	515	36	551
Summer Education Program	1,724	99	1,823
Grand Total	21,273	8,949	30,218

6.1. REGULAR STUDENTS’ ENROLLMENT

6.1.1. Regular Undergraduates Enrollment

TABLE 10: Regular CAES Student Enrollment

Department	Sex		Total
	M	F	
Agribusiness & Value Chain Management	116	35	151
Agricultural Economics	158	65	223
Animal Science	96	52	148
Environmental Science	68	84	152
Natural Resource Management	101	77	178
Plant Science	156	126	282
Range land Management & Ecotourism	76	74	150
Rural Development & Agricultural	113	83	196
Sugar Cane Agronomy	39	23	62
Mid-Career(RDAE)	64	12	76
Total	987	631	1618

TABLE 11: Regular CNCS Student Enrollment

Department	Sex		
	M	F	
Biology	197	142	339
Chemistry	135	106	241
Mathematics	80	16	96
Physics	65	17	82
Molecular Biology & Biotechnology	17	8	25
Total	494	289	783

TABLE 12: Regular SSA Student Enrollment

Department	Sex		
	M	F	
Sport Science	81	88	169
Total	81	88	169

TABLE 13: Regular CSSH Student Enrollment

Department	Sex		Total
	M	F	

Urban Planning	81	25	106
Geo-Information	83	30	113
Afan Oromo	63	48	111
English	32	30	62
French	3	38	41
Journalism	87	25	112
Gender & Development	49	131	180
Tourism & Hotel Management	40	51	91
Geography & Environmental Studies	125	37	162
History & Heritage Management	75	36	111
Sociology	115	90	205
Total	753	541	1294

TABLE 14: Regular CBE Student Enrollments

Department	Sex		Total
	M	F	
Accounting	267	113	380
Cooperatives	183	53	236
Economics	249	28	277
Management	201	190	391
Public Administration development management	117	39	156
Total	1017	423	1440

TABLE 15: Regular CHMS Student Enrollment

Department	Sex		Total
	M	F	
Medicine	1073	365	1438
Pharmacy	127	71	198
Medical Laboratory Technician	110	22	132
Public Health	148	43	191
Emergency & Critical Nursing Upgrading	19	9	28
Psychiatric Nursing	96	12	108
Nursing (Neonatal Nursing, Emergency & critical care nursing)	106	78	184

Midwifery + (Advance Standing Midwifery)	97	99	180
Environmental Health Science	71	22	93
Pediatric Nursing	16	7	23
Total	1863	728	2591

TABLE 16: Regular CCI student enrollment

Department	Sex		Total
	M	F	
Electrical& computer Engineering	324	113	437
Information Science	118	31	149
Information System	129	99	228
Information Technology	148	87	235
Software Engineering	186	80	266
Statistics	173	80	253
Total	1078	490	1568

TABLE 17: Regular HIT student enrollment

Department	Sex		Total
	M	F	
Pre-Engineering	599	181	780
Civil Engineering	674	379	1053
Mechanical Engineering	550	146	696
Hydraulic &Water Resource Engineering (HWREE)	228	115	343
Water Resource & Irrigation Eng. (SWIE)	412	49	461
Food Technology & Process Engineering	467	133	600
Food Science & Postharvest Technology	378	105	483
Chemical Engineering	96	17	113
Agricultural Engineering	233	146	379
Electrical Engineering	159	32	191
Water Supply & Environmental Engineering (WSA)	75	43	118
Total	3871	1346	5217

TABLE 18: Regular COL student enrollment

Department	Sex		Total
	M	F	
Law	268	84	352
Total	268	84	352

TABLE 19: Regular CVM student enrollment

Department	Sex		Total
	M	F	
Veterinary Medicine	464	82	546
Total	464	82	546

TABLE 20: Regular CEBS student enrollment

Department	Sex		Total
	M	F	
Special Needs& inclusive Education	78	56	134
Adult Education & Community Development	86	54	140
Psychology	66	62	128
Educational Planning & Management	108	63	171
Total	338	235	573

6.1.2. Regular Postgraduates Enrollment

I. Masters Programs Enrollment

TABLE 21: Regular masters programs Enrollment

M.Sc. Programs	M	F	total
HIT	104	3	107
Food Eng.	4	0	4
Food Science and Technology	20	0	20
Irrigation Eng.	48	0	48
Postharvest Technology	3	0	3
Engineering Hydrology	5	1	6
Machinery Engineering	7	0	7
Soil & Water Conservation Eng.	17	2	19

CCI	25	6	31
Information Science	17	5	22
Statistics	8	1	9
CNCS	210	57	267
Botany	10	3	13
Applied Biology	7	4	11
Microbiology	9	6	15
Genetics	6	3	9
Biotechnology	22	5	27
Chemistry (Analytical Chemistry; Inorganic Chemistry; Organic Chemistry; Physical Chemistry)	47	13	60
Mathematics	47	4	51
Physics (Computational Physics; Environmental Physics ;Medical Physics; Nano Scale Physics and Quantum Physics)	36	4	40
Sport Nutrition	21	7	28
Sport Medicine	5	8	13
CMHS	133	25	158
Medical Microbiology	30	7	37
Nursing	34	10	44
Public Health	69	8	77
CAES	467	87	554
Agricultural Economics	94	9	103
Agricultural and Applied Economics	9	5	14
Animal Genetics and Breeding	24	2	26
Animal Nutrition	7	1	8
Animal Science	40	7	47
Crop Production	0	0	0
Range Land Ecology	1	0	1
Agri. Business & Value Chain Management	20	9	29
Agro Forestry	3	0	3
Range Ecology & Biodiversity	8	0	8
Agronomy	33	8	41
Weed Science	2	2	4

Plant Pathology	12	3	15
Agricultural Entomology	6	0	6
Agro metrology & Natural Risk Management	15	1	16
Tropical Animal Production	0	0	0
Horticulture	20	2	22
Seed Science & Technology	2	2	4
Rural Development & Agricultural Extension (AICM)			0
Agricultural Communication & Information Management	13	5	18
Animal Production	32	9	41
Dairy Technology	0	0	0
Entomology	4	1	5
Plant Breeding	37	10	47
Plant Science (Seed Science)	7	2	9
Irrigation Agronomy	5	1	6
Environmental Science & Management	17	3	20
CVM	17	2	19
Veterinary Public Health	17	2	19
COL	30	5	35
International Business & Law	30	5	35
CBE	29	4	33
Business Administration	29	4	33
CSSH	60	2	62
Geography & Environmental Study	11	0	11
Teaching English as a Foreign Language	19	1	20
Sociology	22	1	23
Peace & Development Studies	8	0	8
CEBS	33	1	34
Special Needs & Inclusive	7	1	8
Educational Leadership & Policy Studies	12	0	12
Climate Change & Disaster Risk Management	5	0	5

Curriculum & Instruction	9	0	9
Grand Total	1108	192	1300

II. PhD Programs Enrollment

TABLE 22: PhD programs Enrollment

PhD. Programs	M	F	Total
IOT	10	0	10
Soil and water Eng.	7	0	7
Irrigation Engineering	3	0	3
CHMS	15	1	16
Public Health	8	1	9
Medical Microbiology	7	0	7
CAES	285	20	305
Agricultural Economics	69	0	69
Animal Genetics and Breeding	10	0	10
Animal Nutrition	17	2	19
Plant Breeding	29	0	29
Range Land Ecology	3	4	7
Agronomy	33	3	36
Animal Science	2	0	2
Crop Production	2	0	2
Diary Technology	3	0	3
Tropical Animal Production	10	0	10
Plant Pathology	27	1	28
Horticulture	45	5	50
Rural Development & Agricultural Extension	10	1	11
Irrigation Agronomy	1	0	1
Range Ecology & Biodiversity	3	1	4
Animal Production	21	3	24
CNCS	4	0	4
Microbiology	4	0	4
CEBS	13	0	13
Educational Leadership	10	0	10
Curriculum Studies	1	0	1
Special Needs	2	0	2
CSSH	12	0	12
Teaching English & Foreign Language	12	0	12
Grand Total	339	21	360

6.2. NON-REGULAR STUDENTS' ENROLLMENT

6.2.1. Non-Regular Undergraduate Enrollment

I. Distance Students Enrollment

TABLE 23: DEP Students Enrollment

Programs	M	F	Total
Account & finance	41	8	49
Economics	19	1	20
Management	29	5	34
Total	89	14	103

II. CEP Students Enrollment

TABLE 24: CEP student's enrollment

Programs	M	F	Total
Civil Engineering	111	8	119
Computer Science	32	10	42
Pharmacy	80	47	127
Nursing	26	21	47
Accounting	320	145	465
Management	45	16	61
Economics	98	7	105
Software Engineering	23	8	31
Afan Oromo	177	139	316
Total	912	401	1313

III. Summer Students Enrollment

TABLE 25: SEP Students enrollment

College/Institute	M	F	T
CCI	188	31	219
IT	188	31	219
CBE	45	4	49
Economics	45	4	49
CMHS	557	230	787
Nursing	349	83	432
Medical Laboratory Science	148	37	185
Midwifery	60	110	170
CNCS	2624	432	3056

Biology	478	129	607
Chemistry	485	71	556
Physics	679	59	738
Mathematics	730	89	819
Sport Science	252	84	336
CEBS	385	142	527
Educational Planning Management	70	18	88
Special Need Education	315	124	439
CSSH	1501	499	2000
Afan Oromo & Literature	347	291	638
English	348	68	416
Geography & Environmental .Studies	411	80	491
History & Heritage Management	395	60	455
HIT	33	2	35
Software Engineering	33	2	35
Grand Total	5333	1340	6673

6.2.2. Non Regular Postgraduate Enrollment

I. Continuing Postgraduate Enrollment

TABLE 26: CEP postgraduate enrollment

Program	M	F	T
Agricultural Economics	317	11	328
Information Science	8	1	9
Rural Development & Agricultural Extension	24	1	25
Business Administration	17	3	20
Sociology	27	9	36
Educational Planning & Management	100	2	102
Social Psychology	4	6	10
Geography &Environmental Sciences	18	3	21
Total	515	36	551

II. Summer Postgraduate Enrollment

TABLE 27: Summer postgraduate enrollment

Program	M	F	T
Natural Resource & Environmental Eng.	41	2	43
Food Science &Technology	24	1	25
Information Science	5	1	6
Biology	188	16	204
Biotechnology	16	2	18
Mathematics	106	1	107
Chemistry	121	3	124
Physics	89	1	90
Sport Science	148	9	157
Public Health	134	15	149
Agricultural Economics	13	3	16
Animal & Range Management	12	0	12
Plant Science	30	0	30
Rural development &Agricultural Extension	35	0	35
Afan Oromo	92	15	107
Sociology	16	3	19
Geography & Environmental Studies	140	6	146
Teaching English as Foreign Language	176	11	187
Educational Planning & Management	45	5	50
Special Needs & Inclusive Education	16	0	16
School Leadership	238	2	240
History & heritage Management	21	1	22
Educational Leadership & Management	8	1	9
Veterinary Public Health	10	1	11
Total	1724	99	1823

7. GRADUATION STATISTICS

In its 6 decades of endeavors, the university has delivered more than 80,000 educated manpower at different levels, now days, the university is producing near to 8000 graduates per

annum. In 2016/17 academic year, the university warmly has graduated 8,479 graduates in the presence of his Excellency Mr. Lamma Magarssa, minister of oromiya president. And Federal and Regional state government higher officials.

TABLE 28: Number of students graduated in 2016/17

Program	Male	Female	Total
Postgraduates (PhD, MSc, MA, Med)			
PhD	26	3	29
MSc, MA, Med	600	68	668
Total Postgraduates	626 (89.27%)	71 (10.73%)	697
Undergraduates (BSc, BA, LLB, BEd)			
Regular	3285	927	4212
Continuing, Distance and Summer	1685	1115	2800
Total Undergraduates	4970 (76.61%)	2042 (23.39%)	7012
Diploma			
HDP	15	2	17
PDHET	562	191	753
Total Diploma	577 (74.94%)	193 (25.06%)	770
Grand Total	6,172 (72.8%)	2,306 (27.2%)	8479

In addition to those graduates in various field of discipline, Haramaya University Health and medical Science College holds its 4th graduation commencement on 23 December 2017. The college graduates 137 medical doctor students; 18 of them are female Students.



Graduation ceremony at Afranqallo hell, Haramaya University

8.STAFF OF THE UNIVERSITY

Haramaya university currently has 1448 academic staffs (local and international), 121 technical assistants and 4825 administration staffs undertaking the triple mandates of the university (teaching, research, and community service) as well as administrative duties. Of the academic staffs of the university, about 26.31% are PhD holders (Assistant professor and above), 55.46% are Master holders and the remaining 18.23% are with a qualification of first degree.

8.1. LOCAL ACADEMIC STAFF OF THE UNIVERSITY (ON DUTY ONLY)

TABLE 29: Local Academic Staff of the University (on duty only) (2016/17)

College/Insti tute	GA			Ass .Lec			Lecture			Asst. Pro			Asso .Pro			Professor			Grand Total		
	M	F	T	M	F	T	M	F	T	M	F	T	M	F	T	M	F	T	M	F	Total
CAES	17	11	28	0	1	1	66	8	74	23	2	25	20	0	20	6	0	6	132	22	154
CBE	13	2	15	1	1	2	39	9	48	2	0	2	0	0	0	0	0	0	55	12	67
CCI	15	5	20	14	4	18	28	5	33	5	0	5	0	0	0	0	0	0	62	14	76
CEBS	3	1	4	0	0	0	21	3	24	6	0	6	0	0	0	0	0	0	30	4	34
CMHS	20	3	23	14	1	15	92	24	116	23	4	27	3	0	3	0	0	0	152	32	184
CNCS	1	0	1	0	0	0	66	6	72	17	1	18	8	0	8	0	0	0	92	7	99
COL	0	0	0	7	1	8	14	0	14	2	0	2	0	0	0	0	0	0	23	1	24
CSSH	7	3	10	5	0	5	62	10	72	19	0	19	2	0	2	0	0	0	95	13	108
CVM	1	0	1	0	0	0	6	0	6	14	0	14	4	0	4	0	0	0	25	0	25
HIT	1	0	1	80	9	89	45	4	49	4	0	4	2	0	2	0	0	0	132	13	145
Total	78	25	103	121	17	138	439	69	508	115	7	122	39	0	39	6	0	6	798	118	916

8.2. LOCAL ACADEMIC STAFF OF THE UNIVERSITY ON STUDY LEAVE

TABLE 30: Local Academic Staff of the University on Study Leave (2016/17)

College/ Institute	Educational Level									Total		Grand Total
	2nd Degree			3 rd Degree			Specialty Certificate					
	M	F	T	M	F	T	M	F	T	M	F	
CAES	19	9	28	27	5	32	0	0	0	46	14	60
CBE	8	1	9	8	0	8	0	0	0	16	1	17
CCI	39	7	46	2	0	2	0	0	0	41	7	48
CEBS	1	0	1	16	1	17	0	0	0	17	1	18
CMHS	28	7	35	27	5	32	66	17	83	121	29	150
CNCS	4	0	4	28	1	29	0	0	0	32	1	33
COL	9	1	10	1	0	1	0	0	0	10	1	11
CSSH	9	2	11	20	3	23	0	0	0	29	5	34
CVM	5	0	5	4	0	4	0	0	0	9	0	9
IOT	56	7	63	13	1	14	0	0	0	69	8	77
Total	178	34	212	146	16	162	66	17	83	390	67	457

8.3. EXPATRIATE ACADEMIC STAFF OF THE UNIVERSITY

TABLE 31: Expatriate Academic Staff of the University (2016/17)

Institute/ College	Professor		Asso.Prof		Assit.Prof		Lecturer		Total		Grand Total
	M	F	M	F	M	F	M	F	M	F	
CAES	6	0	1	0	3	0	0	0	10	0	10
CBE	0	0	0	1	2	0	2	0	4	1	5
CCI	1	0	3	0	4	0	1	2	9	2	11
CEBS	1	0	0	0	3	0	0	0	4	0	4
CMHS	0	1	3	0	1	0	4	1	8	2	10
CNCS	1	0	2	0	5	0	0	0	8	0	8
COL	0	0	0	0	1	1	0	0	1	1	2
CSSH	0	0	2	0	2	0	0	0	4	0	4
CVM	2	0	0	0	1	0	0	0	3	0	3
IOT	2	1	3	0	5	0	6	1	16	2	18
Total	13	2	14	1	27	1	13	4	67	8	75

8.4. ACADEMIC STAFFS' PROMOTION

TABLE 32: Promoted Academic Staff of the University (2016/17)

No.	Previous Academic Rank	Promoted Academic Rank	Total
1.	Associate Professor	Professor	1
2.	Assistant Professor	Associate Professor	8
3.	Lecturer	Assistant Professor	11
4.	Assistant Lecturer	Lecturer	0
5.	Assistant Graduates II	Assistant Lecturer	26
6.	Assistant Graduates I	Assistant Graduates II	33
Grand Total			78

8.5. ADMINISTRATIVE STAFF PROFILE

TABLE 33: Number of Permanently Employed Administrative Staffs (2016/17)

Level of Education	Main Campus			Harar Campus			Grand Total		
	M	F	Total	M	F	Total	M	F	Total
Medical Doctor	0	0	0	7	0	7	7	0	7
Masters	4	3	7	1	2	3	5	5	10
Degree	222	95	317	173	105	278	395	200	595
Diploma	112	130	242	56	75	131	168	205	373
Certificate	152	160	312	23	68	91	175	228	403
9-12 Grade	413	341	754	95	247	342	508	588	1096
5-8 Grade	455	575	1030	155	381	536	610	956	1566
Below 5 grade	313	462	775	0-	0	0	313	462	775
Grand Total	1671	1766	3437	510	878	1388	2181	2644	4825

*This figure does not take in to account the temporarily employed staffs and Project staffs hired on contract basis.

*107 general doctors and 18 specialists are engaged in medical treatment in Hiwot Fana specialized teaching hospital in addition to academic duties.

9. HU IN RESEARCH

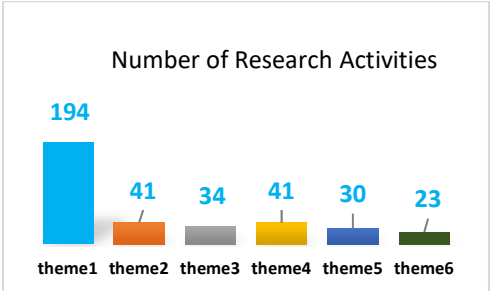
Haramaya University, in its long years of academic history, has been doing research to the highest level and releasing technologies. The University has recently organized its research in the following six themes:

- I. Productivity, and environmental sustainability for food security, and poverty alleviation
- II. Human health, nutrition, and welfare
- III. Energy, engineering, and information technologies
- IV. Human and social development
- V. Institutions, innovation systems, and economic development
- VI. Basic science research

In the 2016/17 fiscal year, under these themes, 336 research activities were undertaken and 88 research projects were completed.

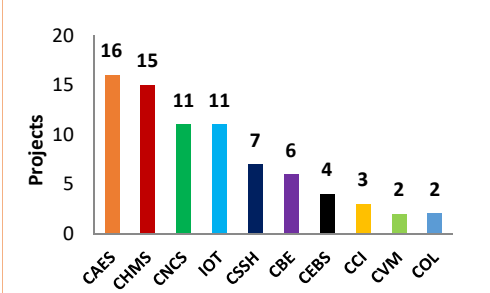
In the year 2016/17, the University has started a new research-funding scheme, innovative research fund, for researchers with an innovative idea and tangible output and funded three among many on an open competition. One of the projects has finished the program and showed the outcome on a conference and the remaining two are ongoing. The program has continued this year with additional two more funding schemes, women research grant and knowledge transfer grant.

Among the total projects, 113 projects were supported by the Ethiopian Agricultural Research Institute (EARI), and the remaining projects were funded by Haramaya University’s regular budget (Graph A).

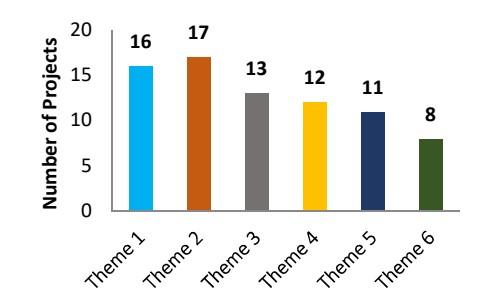


Graph A: Distribution of research activities by themes

In the year 2016/17, 77 projects were initiated, projects distribution in year by theme and college of the initiator is indicated in the next graphs (Graph B & C).



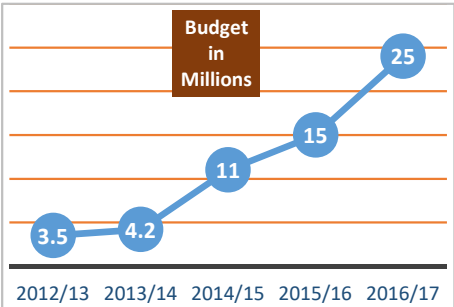
Graph B: The distribution of projects initiated in the year 2016/17 by college.



Graph C: The distribution of projects initiated in the year 2016/17 by theme.

The research funding from government budget has increased over the years and

reached 25 million during the year 2016/17 (Graph D)



Graph D: University’s regular budget allocation for research activities over the years.

Variety releases

Haramaya University in the year 2016/17 has released 9 varieties of different crops. This is the highest release in university’s long years of research history. Varieties released are indicated in the next table.

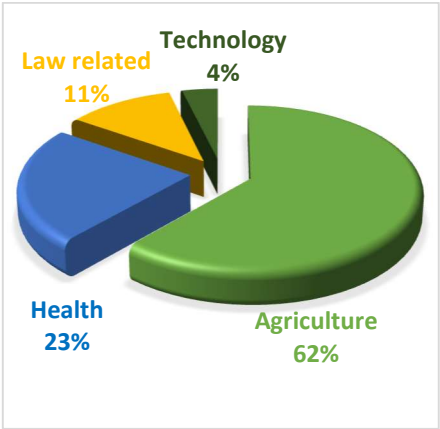
TABLE 34. Crop varieties released in 2016/17

Crop variety	Released variety
Groundnut	Babile-1 (ICGV-98412)
	Babile-2 (ICGV-98404)
	Babile-3 (ICGV-94100)
Sesame	BaHa-zeyt
	BaHa-necho
Wheat	Bread wheat (temporarily released)
Maize	Afrankaloo (Zea mays L.)
	Baatee (Zea mays L.)
Onion	Improved Huruta.

Externally funded projects

Haramaya University works actively with collaborating institutions within and out of Ethiopia in the area of research and community development. Many projects are known to operate under the university and in the year 2016/17 a total of 26 projects registered a total and annual operating cost of 20.4 and 5.9 million USD, respectively. The dominant areas of collaboration are in

the field of Agriculture and Health (Table 35).



Graph E: Externally funded projects by their areas of focus.

TABLE 35: externally funded projects focus areas, total and annual operating cost

Activities related to	Projects	Total Budget (USD)	Current fiscal year budget (USD)
Health	6	4,090,420	2,035,548
Agriculture	16	9,756,821	2,199,136
Law	3	6,234,164	1,306,043
Technology	1	350,000	175,000
Total	26	20,431,405	5,917,363

Research stations

Haramaya University possesses several research, technology demonstration and extension stations in low and highland agro-ecologies of eastern Ethiopia (Table 3). These stations are established for research, field-testing, validation, demonstration, and disseminating improved technologies.

In addition, the University works in collaboration with several farmers’ training centers and peasant associations in a number of districts in East and West

Hararghe zones, Harari region, and Dire Dawa Administrative Council.

TABLE 36: Research Stations and their major activities

No	Station	Location	Major research activities
1.	Main campus(Rare)	Haramaya	All crop types research
2.	Main campus(sheep)	Haramaya	Sheep research
3.	Main campus(goat)	Haramaya	Goat research
4.	Main campus(Beef)	Haramaya	Beef research
5.	Babile	Babile district	Lowland oil crops and sorghum
6.	Fedis	Fedis district	Sorghum & other crops
7.	Kersa demographic	Kersa District	Population and Human Health research
8.	Hirna	Tullo district	All crops research
9.	ErerGuda	Babile district	Camel research
10.	Tony farm	DireDawa	Fruit & vegetable crops research
11.	Grawa	Gara-Muleta	All crops research
12.	Barakele	Babile District	Fruit & vegetable research

Released varieties currently under active multiplication and dissemination

In its six decades of existence, the University has released a number of high yielding crop varieties. The varieties released by the University in the span of about sixty years number several hundreds. However, the following new varieties are the ones that are in wide use currently.

TABLE 37: Types of technologies disseminated in 2016/17

No	Crop	No of improved varieties
1.	Potato	2
2.	Maize	7
3.	Sorghum	8
4.	Teff	1
5.	Chick pea	3
6.	Wheat	6

7.	Common bean	3
8.	Groundnut	6
9.	Faba bean	3
10.	Garlic	1
11.	Carrot	1
12.	Sesame	2
13.	Forage	3
14.	Lupine	1
15.	Sweet potato	1

TABLE 38: Farmers training centers (FTCs) that are used for technology disseminations

I. Haramaya City Administration		
1. IfaOromia	10. Tinike	
2. Ifa Bate	11. Bachaki	
3. BiftuGada	12. TujiGabisa	
4. AdelleWaltaha	13. Kurro	
5. KersaGatata	14. SherifKalid	
6. KurroKorke	15. Kara tarkanfi	
7. Kerensa		
8. MalkaGamachu		
9. Damota		
II. Kersa Woreda		
16. Balalange	18. Ramata	
17. Soddu		
III. GoroGutu		
19. HoraWaligala	21. GoroGutu	
20. QoboWaltaha		
IV. Chinakson Woreda		
22. Yugyug	24. Lugo	
23. Merar		
V. Fadis		
25. Mulata	28. Umar Kulle	
26. KAre		
27. Idobas		
VI. Meta Woreda		
29. Chalankolola	31. Burka jalala	
30. Muti		
VII. Gurawa Woreda		
32. JiruGamachu	33. Birbirs	
VIII. Kurfachale Woreda		
34. Alamduru	35. Kurfa	
IX. Jarso Woreda		
36. GaraAbdule	38. Mlakajabdu	
37. Badasa	39. Dabalokaba	
X. Dadar Woreda		
40. Chaka gammachu	41. Waltahagudina	
XI. Kombolcha Woreda		
42. ATVET college		

XII. Harari City	
43. Dire Tayara	45. Qile
44. Burka	
XIII. Dire Dawa Administration	
46. Awale	48. Wahil
47. Asalesa	
XIV. Guba Qoricha	
49. Kutir 5	51. Kutir 13
50. Kutir 11	52. Kutir 14
XV. Hirna	
53. Ifa Bas	54. Kira kufis
XVI. Babile	
55. Ifadin	56. Erarguda
XVII. Gursum	
57. Kasa Oromia	59. Bakaka
58. Odaoromia	

Cooperatives & Unions Involved In Technology Transfer Activities

- Bikiltu Gudina and She Hussien Cooperatives in Babile Woreda
- Abdi Boru Cooperative in Meta Woreda
- Melka Buba Cooperative in Haramaya Woreda
- Bela Bukis and Hora Waligala Cooperatives in Goro Gutu Woreda
- Awubara Cooperative in Jarso Woreda
- Burka Gamachu Cooperative in Kombolcha Woreda
- Handhura Kusum Cooperative in Kersa Woreda
- Adele Youth Groups in Haramaya
- Tuta Kannisa Youth Groups in Haramaya

Capacity-Building Activities (Trainings)

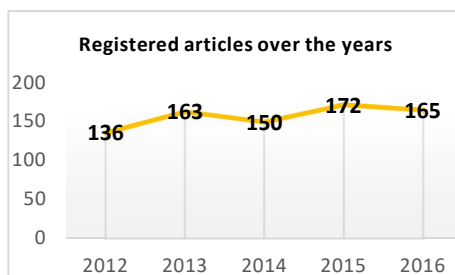
- Training on improved seed production for six different seed producing cooperatives
- Training on full agricultural technology packages for DAs and Experts from 16 different woredas
- Training on newly emerged potato disease (red-spider mites) for DAs, model farmers and Experts from Haramaya and Kersa Woredas
- Training on improved vegetable production under irrigation for DAs, Experts Cooperative Union in Haramaya Woreda
 - Training on improved groundnut production for DAs and Experts from 6 different woredas

Other Activities

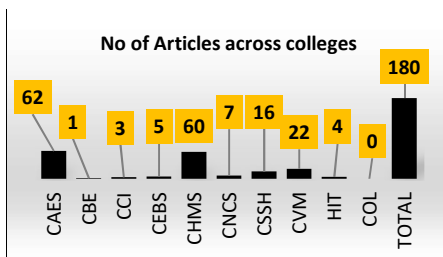
- Drip irrigation technology provided for jobless youth in Haramaya
- Seeds of different crops provided to food insecure groups at Haramaya Woreda Adelle area.

Research Publications

Academic staffs in HU publish hundreds of journal articles, book chapters and other form of publications in national and international peer reviewed journals. It is believed also that there are publications which are not registered by the office. The distribution of registered articles over the year by themes and colleges is indicated in the following graph.



Graph F: Registered articles over the years



Graph G: Registered articles by colleges

In addition, HU periodically published 5 peer reviewed journals and a number of conference proceedings. In the year 2016/17, the regular journals has released the following issues in their regular releases (Table 38)

TABLE 39: University journals published in the year 2016/17


S.N	Journals	Status
-----	----------	--------

1	East African Journal of Sciences	2016 Vol. 10 (issues 1 & 2) published 2017 Vol 11 (1) Published online
2	East African Journal of Health and Biomedical Sciences	2016 Vol. 1(1)published2016 Vol. 1(2) on progress
3	East African Journal of Social Sciences and Humanities	Vol. (issues&2) published
4	East African Journal of Veterinary and Animal Sciences	Vol. 1 (1) published
5	Haramaya Law Review	Vol. 4 published

10. HU IN COMMUNITY SERVICE

Haramaya university are transforming the social, economic and environmental well-being of our communities through our teaching, research and public event activities in different region of Oromiya, Diredawa, Harar, Afar, and Somalia.

Community engagement roadmap has been designed to guide the service in a way that the community's needs. The University has been offering a number of need-based and effective community development services in collaboration with local & international donors, and other stakeholders. Some of the community services given by the university are as follows.

 Agricultural technology demonstration & dissemination for farmers.



500 moveable poultry house dissemination for farmer in collaboration with Zoa international org.



Improved Goats breeds' dissemination



Improved Chicken breed dissemination for farmers



Improved crop varieties demonstration & dissemination in 40 Farmers training centers

Capacity building for the surrounding community, government offices including schools and health centers/hospitals. This also includes awarding scholarship for different target community members.



The University has distributed More than 250,000 books which cost about 16 million birr for about 200 secondary school that has been obtained from organization namely book for Africa and Christian relief/bread and water for Africa.

Supporting the nearest high schools to use laboratories of the University for their Practical Education

The Haramaya water shed projects which contribute to the natural resource conservation and environmental protection of the area and are the main rehabilitation process of Lake Haramaya project underway by university.



Providing free legal services in its 43 centers operating in different districts which serve more than Hundred thousand of community. The centers also serve as students' practical works. These centers are run by employed lawyers as well as academic staff and students of COL with the support of USAID

fund. The service mainly targets on disadvantaged groups of the community such as disabled people, children, woman, people with low income and HIV exposed. The following legal services were given to the Beneficiaries in 2016/17.

TABLE 40: Types of free legal services of HU and number of beneficiaries in 2016/17

Type of Service given	Number of Beneficiaries		
	Male	Femal e	Total
<i>Legal Awareness Creation</i>	23,765	24,960	48,725
<i>Legal Advice (Oral)</i>	8,890	11,560	20,450
<i>Pleadings</i>	5,385	8,551	13,936
<i>Court Representation</i>	1,150	1,608	2,758
<i>Follow-up Cases of Arrestees/Prisoners</i>	1,425	1,159	2,584
Total beneficiaries	40,615	47,838	88,453
Estimated costs	21,661,130 .Birr		




Free legal service center and service coverage map

Provide training and consultancy services for experts, entrepreneurs, & civil servants.

TABLE 41: training given in 2016/17

College	Conduct Day	No. of Trainee	Training offered
CSSH	3days	37	Attitude and team works
			Work Environment for model School teachers
IOT	5days	73	Solid Work Software and ANSY Software
	3days	32	Lab View Training
CBE	4days	160	Job hunting
			Business development

			Entrepreneurships a career option
	1days	83	Women Leadership
	2days	60	Business plan development
			Cooperative marketing
			Cooperative and Accounting
CCI			Cooperative Strengthening
	7days	121	Basic Computer Skills and Maintenance
			SQL Database and internet
CEBS	10days	141	Collecting information about adult education from Education, Agriculture Health Women, Children and Youth Bureau
	3days	328	Psychosocial Support training
	4days		Self-esteem building training for SOS School
	6days		Child counselling for SOS village children
	7days		Psychosocial support training
	2days	76	Brail Training for
	2days	269	Consultative Meeting
CNCS	3days	305	Porous Solids
	2days	58	Mathematics Olympiad
COL	14days	185	Training on Women, Children and Youth Rights
CHMS	6days	54	Symposium
	4days	47	Research methodology Training
	4days	54	Basic Mental Health training

 Supporting Physical impaired people in collaboration with foreign organization.



Artificial leg Donation for 315 Disabled people

11. ADMINISTRATIVE GUIDELINES

HU had developed Consistent Institutional policy document, guidelines, manuals, rules and regulations so as to enhance clear responsibility, accountability & good governance. Some of these are;

1. *HU Strategic Plan (2015/16-2019/20)*
2. *Senate Legislation*
3. *HU Research Thematic Area*
4. *Promotion & Publication Guideline*
5. *HU Community Engagement Road Map*
6. *Guideline on Community Based Education*
7. *Establishing Merit of publication & Creative Work at HU*
8. *Teachers' Code of Conduct*
9. *Students' Code of Conduct*
10. *Community & Admin Staff Scholarship Guideline*
11. *Technical Assistant Scholarship Guideline*
12. *Postgraduate Supervision & Defense Guideline*
13. *Student Assessment Guideline*
14. *Constitution of HU Students' Union*
15. *HU Students' Union Election & Appointment Regulation*
16. *Employment & Promotion Guideline*
17. *Human Resources Management & Development Operational Manual*
18. *Employees Safety & Health Materials Guideline*
19. *CDE Tuition Fee & Staff Payment Guideline*
20. *Academic Staffs' Incentive Package*
21. *Anti-Sexual Harassment & Misconduct policy, HU Facts and figures booklet*

12. HU'S CURRENT PARTNERSHIP AND NETWORKING

HU has established numerous international partnership with stakeholders and is open to partner with international and national institutions in any activity that is related with teaching-learning, research, and community services so as to improve quality of education, undertake joint research projects, and enhance community empowerment program. Among These HU won a competitive World Bank grant amounting to six million US Dollars to establish an African Center of Excellence in Climate Smart Agriculture and Biodiversity Conservation in 2016/17

TABLE 42: Collaborations with foreign university

No	Name of the partner institution	Started since	Area of the collaboration
1.	University of Burgen	2014	5 year project under way on neonatal mortality
2.	Minnesota University (USA)	2012	Research on HIV/AIDS that use and ARTE Adherence.
3.	Norwegian Institute for Agricultural and Environmental Research ,(Norway)		Joint research
4.	Free University of Amsterdam (Center for world fixed studies),(Netherlands)	July,2011	Joint research under way on the topic of "Improving drought resilience of pastoralist systems in the Afar region of Ethiopia".
5.	North Western University School of Law (USA)	2013	Staff exchange, scholarship, training text book donation
6.	Stellenbosch University, (South Africa)	2014	Training, Staff visit
7.	University of Washington Seattle, (USA)	2009	Staff exchange, scholarships, student exchange,
8.	St.Thounss University School of Law(USA)	2014	Moot court competition sponsorship
9.	North Western University school of Law,(USA)		Exposure visit in USA
10.	Ashikawa Medical University, department of parasitology, (Japan)	2011	<ul style="list-style-type: none"> Supported short stay grant to two staffs for three years to do laboratory activity. Support to attend seminar and laboratory training
11.	RUFORUM/Regional University forum for Agriculture, (Africa)	Oct, 2014	Support to attend meeting on livestock research
12.	Institute of Tropical Medicine (ITM), (Belgium)	2012	<ul style="list-style-type: none"> SNNDf partner membership Research grant and Study visit
13.	CMAAE, (17 African Universities)		<ul style="list-style-type: none"> 15 students were given the opportunities of MSc Starting from 2015/16 HU is allowed to admit students from abroad and to effect this financial support will be given. Since staff exchange is part of it, a professor has delivered 2 PhD courses at HU. 150,000 dollars of research fund was given to purchase laptop and printer
14.	Nebraska lincon University, (USA)	2013	The bore hole for drinking water was digged
15.	Humbort University(German)	2014	Research project developed and approved. The project also supports some university's student by research fund.
16.	Karatina University(Kenya)		
17.	Copenhagen University (Denmark)	2013	<ul style="list-style-type: none"> 2 PhD and 4 MSc students were trained by a project About 5 million estimated costs of laboratory materials were purchased to HU

No	Name of the partner institution	Started since	Area of the collaboration
18.	RUFORUM (46 University), (Africa)	2009	<ul style="list-style-type: none"> 2 MSc programs under implementation Capacity building Research development
19.	Queen land University, (Australia)	2015	<ul style="list-style-type: none"> Research capacity building
20.	Virgin tech and Virginia University	2005-2014	<ul style="list-style-type: none"> Literature exchange Research capacity building Peritoneum management
21.	China academy of science, (China)	2014	Long term ecological research networking in Blue Nile basin
22.	Hamburg University, (Germany)	2015	Arboretum (Nursery establishment)
23.	Wageningen University, (Netherland)	2014	The universities are undertaking research on Awash national park, CASCAPE & ISSD projects under way
24.	Israel research group (Israel)		Experts from Israel give their truth to support Dairy Farm.
25.	FARA (Forum for Agricultural Research in Africa)		MOU signed and Project on "Africa Human Capital in Science, Technology and Agripreneurship for Food Security Framework (AHC-STAFF) "to be led by Haramaya university and implemented nationally.
26.	" Xavier University -Ateneo de Cagayan University, (Philippines)		Discussions were made to sign MOU
27.	Indian HIMP, (Indian)		Research and student staff exchange, strengthened partnership by signed MOU.
28.	Care Canada, (Canada)		Care Ethiopia and Care Canada contentious research project affiliated with western Hararghe zone, to give gender inclusion training for 50 workers.
29.	Nairobi University, (Kenya)		Joint research project
30.	Humbulot University, (Germany)		Joint research project
31.	United nation university, (Netherlands)		Productive Employment project competition
32.	Vergineatec university (USA)		Joint research project
33.	University college corck,(Ireland)		Capacity building for Two PHD student and research collaboration
34.	Lincoluine university (HAPPI)		150 farm households trained on Farming food and fitness project.
35.	Spanish Rearch Council(CSIC),(Spain)	Jan, 2015-16	Short-term training to staffs, Team from the council would come for experience sharing in 2016
36.	University of Western Cape	2010	PhD training, Internship, Nanoscience Workshop
37.	CincinnatiUniversity, (USA)	2003	<ul style="list-style-type: none"> 3 students were given the opportunity of second degree.
38.	University of Cape town, (South Africa)	2006	<ul style="list-style-type: none"> 2 PhD- students started their studies but, hey can't finish it. Purchase of laboratory material. Refrigerator abd Bulb which use sun energy was given for Kerensadereba clinic and school purchase of drinking water pump for bore hole
39.	Enesbruck university	2014	Joint supervision of students
40.	GIZ/PTP, (Germany)		Experts from Germany give training for university for lab- technician on disposal of Laboratory Chemical.

No	Name of the partner institution	Started since	Area of the collaboration
41.	HIMT Group of Institutions, (India)		To make support for different program MOU was signed.
42.	Djibouti university (Djibouti)	2015	Capacity building programs
43.	Somali land national university (Somaliland)	2015	Capacity building
44.	Kumoh National Institution of Technology (South Korea)	2015	MoU signed and Scholarship opportunities provided by the institute
45.	Norwegian Institute for Agricultural and Environmental Research, (Norway)		Joint research
46.	Libya university, (Libya)		To resume the previous partnership
47.	SIDA, (Sweden)		Strengthen the support of Sweden partner project with ministry of education on universities post-graduates program.
48.	Oklahoma state, Kansis state, Texas Tech, Langston, Tarlten state, Tamukingsvil universities (USA)		MoU signed and partnership started
49.	Texas tech university (USA)		Capacity development, student and staff exchange
50.	World Bank	May 2016	Establishment of African Center of Excellence in Climate Smart Agriculture and Biodiversity Conservation.
51.	Fair Planet, Israel	2014	Technology test and transfer
52.	Christian relief, USA	2012	Medicine, Medical supplies and books support for community

13. SPORT IN HU

Sport is the primary entertainment at HU. Recently, the university has constructed a huge sport academy in addition to the previous sport facilities it owned in different campuses. Since 2007/08 G.C, the university has been participating in Ethiopian public universities sport festival. In these competition, HU has got the following overall rank.

Year of participation

Rank

In 2007/08 G.C.	second
In 2008/09 G.C.	third
In 2009/10 G.C.	third
In 2010/11 G.C.	fourth
In 2011/12 G.C.	Fourteenth
In 2012/13 G.C.	fourth
In 2013/14 G.C.	Fourth
In 2014/15 G.C.	Third
In 2015/16 G.C.	No sport festival
In 2016/17 G.C.	No sport festival

14. UNIVERSITY FACILITIES

There are a number of facilities which provide various service for the university community. Some of these facilities are run by private entrepreneur and others are by the university itself. The following is the list of some of these facilities.

1. Nine Libraries



2. Computer pools (undergraduate and post graduate students, blind students' internet center and girl's internet room)



girl's internet room



Disabled students' Computer pools

3. 52 Wet Laboratories, 9 workshop and 28 computer laboratories



4. Teaching hospital (HiwotFana)



5. Grand convention center



6. Moot court: This is used as a practice centre for our Law students.

7. Different animal farm units used for research, teaching and income generation (dairy farm, poultry farm, goat farm, sheep farm, swine farm, fattening etc.)



8. 11 University's Field research centers



9. Resource center (which includes bed rooms, meeting halls, restaurant and other services)



10. Marketing centers (which includes supermarket, barberies, beauty salons (men & women), cafeterias, restaurants, stationary shops, gift items shops, and book shop etc. at different places of the campuses)



11. Banking services (Branch of Commercial bank of Ethiopia with ATM and Dashen Bank ATM)

12. Postal service

13. Staff Residencies



14. Model School (From Kinder garden up to Preparatory School)



15. Day care center



16. Gymnasium and other sport fields



17. Swimming pool



18. Parking lot



19. Walk Way for Disability



20. The sport academy

21. Printing and documentation center



22. Tele education center/video conference terminals

23. University garage



24. Fuel distributing terminal

25. Slaughter house / Abattoir



26. Zoo

27. Auditorium(multipurpose hall)



28. Staff Lounge



29. Post Graduate Students' Lounge

30. Higher clinic



31. Pharmacy



32. Campus Police Station

33. FM Radio Station



34. Museum

14.1. LIBRARY AND INFORMATION SERVICES

Library Users

HU Library is the biggest library in the eastern region of the country. Therefore, the library is rendering its services to the university community as well as external users. External users include governmental and nongovernmental organizations, universities and colleges, high schools and even individuals who are working in different parts of the country.

It serves 24 hours in a day and 7 days in a week.

Seat Capacity and Collections Type

The University Libraries, which has a total seating capacity of 8,199 students at a time, has collections size of 243, 412 in different subject areas. The library also preserves some rare documents (institutional memories), and many other legal documents in soft and hardcopy formats. HU library has been subscribing various local and international magazines and newspapers. The Library and Information Services also provides access to the leading electronic journals with goal of strengthening the University graduate program and research. In this regard, it became among winners of the 2013 E-resources promotion award computing with Universities and research institutions in Africa and Asia.

TABLE 43: Seat Capacity and Internet Access

Name of the Library	Seat No.
Main Library	2759
School of Graduate Students Library	514
Female Students Library	446
College of Law and Social Sciences Library	916
College of Technology Library	714
Veterinary Medicine Library	714
Chiro Campus Library	420
Harar Campus Library	1014
Harar Campus SGS Library	702
Total	8,199
Computers with Internet Connections	
Main Library Upper	43
Main Library Basement	128
SGS Library	114
Female Students Library	16
Technology Library	21

Total	322
Wireless Internet Spots	
SGS Library	2
College of Law and Social Sciences Library	1
Veterinary Medicine Library	1
Technology Library	1
Main Library	1
Total	6



Partial view of Library's Reading Space

Internet services

The library has internet services for both Undergraduate and Postgraduate students. It has separate Internet rooms for undergraduate students, postgraduate students, and female students.



Students Internet Room (Main Library)

Library Users

HU Library is the biggest library in the eastern region of the country. Therefore, the library is rendering its services to the university community as well as external

users. External users include governmental and nongovernmental organizations, universities and colleges, high schools and even individuals who are working in different parts of the country. It serves 24 hours in a day and 7 days in a week.

Multimedia Services

This section provides access various supplementary notes, data, and software's to users.



Multimedia Service Room

Documentation Service

More than 36,148 documents, 15,100 bound journals, 2,229 theses, are available in this section. On average 16,220 local and international documents and research publications is being accessed yearly.

Online Public Access Catalog (OPAC)

The materials in the libraries are automated. Above Hence, staff and students can search the books in the library anywhere in the campus through the OPAC.

<http://10.10.148.10/lis/opac/index.php>

Library Security System

Theft of library materials has been a serious problem. To address the same, the library has implemented Security System, which uses state of the art technology to alert librarian in case of unauthorized checkouts of library materials.



Security System Main Library Front Gate



Library employees tagging books in the staff work station machine

English Reading Room

The English reading room in the main library helps to improve English language skills of students. There are more than 1600 classic literature, other types of fiction and. reference Books.



Information Literacy and Reference Management Training

The library delivers various electronic awareness services using its local website, leaflets, posters and emails. More importantly, the Library delivers Information Literacy Training to increase access and use of various E-resources accessible in the library. We also train graduate students on the use of reference management software.

TEEAL Digital Library

We have offline access to Digital library for excellence in agricultural research and education, there is also a separate room dedicated to the services it locates on the post graduates Library Immediate access to hundreds of the top research journals in agriculture and the related sciences.

Digital Library

The digital Library inaugurated in 2015, made accessible more than 20,647 E-books in various disciplines and past exams and guidelines.

Institutional Repository

Above 7, 2000 Collection of Thesis and Dissertation, institutional archives etc.
<http://hulirs.haramaya.edu>

Other Services

Reference Services (In All subjects, Dictionaries, encyclopedias, guides, almanacs and hand books)

- Circulation Services
- Periodical Services

- On Spot Reading Service



Computer Rooms in Main Library



Information Access and Use Training

ELECTRONIC RESOURCES

The university regularly communicates with various donors and publishers to secure access to electronic journals for free. Currently, we have access to Over 39 highly reputed journal databases.

No	Resource Name	URL	Subject Strength	Authen tication
	Science Direct	http://sciencedirect.com	The leading database on medicine, science and Engineering (Access to above 13,000,000 records)	
	Scopus Databases	Scopus.com	● Leading indexing and abstracting databases	
1.	ASCE Journals Online <i>ASCE Journals Online provides unprecedented access to 32 journals encompassing more than 48,000 full-text papers published since 1983 - that's over 408,000 pages! Approximately 4000 new papers will be added each year.</i>	http://ascelibrary.org/	<ul style="list-style-type: none"> • Environmental Engineering • Architectural Engineering • Geotechnical Engineering • Construction • Earthquake Engineering • Energy • Engineering Mechanics • Water Resources Engineering • Coastline and Port Engineering • Pipelines • Structural Engineering • Transportation and Development • Sustainable Engineering 	IP based
2.	American Chemical Society Journals and Magazines <i>The American Chemical Society is the leading publisher of peer-reviewed research journals in the chemical and related sciences, serving scientific communities worldwide through an unparalleled commitment to quality, reliability, and innovation. Access is to over 35 high quality, high impact journals.</i>	http://www.acs.org/content/acs/en.html	<ul style="list-style-type: none"> • Agriculture • Biochemical Research Methods • Biochemistry, Molecular Biology • Biotechnology, Applied Microbiology • Chemistry • Computer Science • Crystallography • Energy and Fuels • Chemical Engineering • Environmental Science • Food Science & Technology • Materials Science • Pharmacology & Pharmacy • Plant Sciences • Polymer Science • Toxicology 	IP based
3.	American Physical Society <i>Access to the Physical Review Online Archive (PROLA) and journals produced by the American Physical Society.</i>	http://publish.aps.org/browse.html	<ul style="list-style-type: none"> • Physics • Atomic, molecular and optical physics • Condensed matter and materials physics • Nuclear physics • Particles, fields, gravitation, and cosmology • Statistical, non-linear, and soft matter physics • Accelerators and beams 	IP based

No	Resource Name	URL	Subject Strength	Authentication
4.	Canadian Science Publishing (operating as NRC Research Press) <i>Full text of 16 online peer-reviewed journals in a broad range of scientific disciplines with back files dating back to 2001 in most cases.</i>	http://www.nrcresearchpress.com/	<ul style="list-style-type: none"> • Physics education research • botany • cell biology • chemistry • civil engineering • earth science • fisheries and aquatic sciences • microbiology • physics • sport science • zoology • forestry 	IP based
5.	EBSCO Host Research Databases <i>Access to 8 major databases: Academic Search Premier; Business Source Premier; ERIC; Masterfile Premier; Newspaper Source; Health Source : Nursing & Academic; Health Source : Consumer Edition; Medline.</i>	http://search.ebscohost.com/	<ul style="list-style-type: none"> • Good coverage of most branches of social sciences and humanities • Strong business coverage • Strong nursing, medicine and allied health coverage • Dedicated newspaper database, kept separate from peer-reviewed content 	IP based
6.	EUP Journals Online <i>Edinburgh University Press publishes over 30 journals across a range of disciplines in the humanities and social sciences.</i>	http://www.euppublishing.com/	<ul style="list-style-type: none"> • Literary Studies • Philosophy • Historical Studies • African Studies • Linguistics • Film & Media Studies • Islamic & Middle Eastern Studies • Politics • Law • Scottish Studies 	IP based
7.	Expanded Academic and Health & Wellness Resource Center <i>Expanded Academic: Unparalleled in its depth and scope, this premier database offers balanced coverage of every academic subject -- from advertising and microbiology to history and women's studies. Health and Wellness Resource Center: For access to authoritative health and medical information, turn to the Health & Wellness Resource Center, a specialized reference tool that offers a vast collection of medical information to academic, medical and public libraries.</i>	http://www.gale.cengage.com/	<ul style="list-style-type: none"> • economics, topics in business and finance • anthropology, archeology • computing and computers • education • art, literature, music, history • international relations, law • sociology, philosophy, religion • various topics in medicine and health • STDs and AIDS • psychology and mental health • nursing • includes the BMJ and JAMA 	IP based
8.	HST - The Biomedical and Life Sciences Collection <i>Specially prepared, online, animated, audio-visual lectures by world leading authorities on biomedical and life sciences for researchers and university faculty members.</i>	http://www.hstalks.com	<ul style="list-style-type: none"> • Biomedicine and life sciences 	IP based

No	Resource Name	URL	Subject Strength	Authen- tication
9.	IET Digital Library <i>Over 20 Research journals and letters in electrical and electronic engineering</i>	http://www.theiet.org/	<ul style="list-style-type: none"> • Electrical & electronic engineering • Telecommunications • Computing • Power • Control • Radar • Circuits • Materials • Life sciences related research • IT 	IP based
10.	JSTOR <i>An archive of over one thousand leading academic journals across the humanities, social sciences, and sciences, as well as select monographs and other materials valuable for academic work. The entire corpus is full-text searchable, offers search term highlighting, includes high-quality images, and is interlinked by millions of citations and references. The archive contains over 800 important scholarly journals of high-quality, interdisciplinary content to support scholarship and teaching in 50 disciplines</i>	http://www.jstor.org	<ul style="list-style-type: none"> • Economics • History • Political Science • Language & Literature • Art & Art History • Music • Mathematics & Statistics • Education 	IP based
11.	OUP - Oxford Journals <i>Oxford Journals publishes journals from science, technical, professional, medical, humanities, arts and social science disciplines. Organisations that qualify for the free Developing Countries Oxford Online Collection offer will obtain access to over 200 titles.</i>	http://www.oxfordjournals.org/	<ul style="list-style-type: none"> • Biological Sciences • Medicine • Public Health and Epidemiology • Humanities • Social Sciences • Law • Economics, Business, and Finance • Mathematics, Statistics, Computing and Physics 	IP based
12.	Palgrave Macmillan Journals <i>Palgrave Macmillan offer a combined portfolio of over 70 peer-reviewed e-journals</i>	http://www.palgrave-journals.com/pal/index.html	<ul style="list-style-type: none"> • business and management • economics • education • information systems and technology • political science and international studies • social and cultural studies • urban design and architecture 	IP based
13.	Royal College of Physicians <i>Clinical Medicine journal is read by leading physicians in hospitals across the world. It features articles covering original research, current issues, ethics, law, clinical governance and audit, and also reports on prestigious College lectures and conferences.</i>	http://www.clinmed.rcpjournal.org/	<ul style="list-style-type: none"> • Clinical medicine • Public Health 	IP based
14.	Royal Society for Chemistry - RSC Journals Archive	http://pubs.rsc.org/	<ul style="list-style-type: none"> • Biology • Biophysics 	IP based

No	Resource Name	URL	Subject Strength	Authentication
	<i>Scientific publisher of biology, biophysics, chemical science, materials, medicinal drug discovery and physics high-impact journals and books</i>		<ul style="list-style-type: none"> chemical science Materials medicinal drug discovery physics 	
15.	Royal Society for Chemistry - RSC Journals Online 37 full text journals spanning all branches of chemistry, plus a range of key databases in analytical chemistry, catalysts and catalysed reactions, organic synthesis and natural products plus its online series of specialist periodical reports, and a range of key databases. <i>The Royal Society of Chemistry is the leading organisation in Europe for advancing the chemical sciences and is one of world's leading chemistry publishers. Supported by a network of 45,000 members worldwide and an internationally acclaimed publishing business, RSC activities span education and training, conferences and science policy and the promotion of the chemical sciences to the public.</i>	http://pubs.rsc.org/	<ul style="list-style-type: none"> All branches of chemistry including traditional fields (organic, inorganic, analytical chemistry) plus newer developments and cross-disciplinary studies such as natural products and green chemistry Databases in analytical chemistry, catalysts and catalysed reactions, organic synthesis and natural products Specialist reports in: amino acids, peptides and proteins, carbohydrate chemistry, monosaccharides, disaccharides and specific oligosaccharides, catalysis chemical modelling, electron paramagnetic resonance, NMR, organometallic chemistry, organophosphorus chemistry, photochemistry, spectroscopic Properties of inorganic and organometallic compounds 	IP based
16.	Sage Online Journals <i>Over 550 journals in the business, humanities, social sciences and science, technology and medicine (STM)</i>	http://www.sagepub.com	<ul style="list-style-type: none"> Humanities Social Sciences Scientific, Technical and Medical 	IP based
17.	Springer eJournals <i>Springer is one of the leading international scientific publishing companies. Springer's eJournals cover a wide range of subjects including biomedicine and the life sciences, clinical medicine, physics, engineering, mathematics, computer sciences, human sciences, social sciences and economics.</i>	http://link.springer.com	<ul style="list-style-type: none"> Engineering Humanities, Social Sciences and Law Mathematics and Statistics Medicine Physics and Astronomy 	IP based & Basic Subscription
18.	Taylor & Francis Journals <i>Provides online access to the best reference titles in the agricultural sciences in eight easily searchable resources. Featuring over 6,700 pages of printed content, these online titles allow you to explore more than 1,900 total entries from acclaimed works.</i>	http://www.tandfonline.com	<ul style="list-style-type: none"> Agricultural, Food, and Biological Engineering Animal Science Pest Management Plant and Crop Science Soil Science Water Science 	IP based

No	Resource Name	URL	Subject Strength	Authentication
19.	University of California Press <i>Access to 33 Journals of the University of California Press.</i>	http://www.ucpressjournals.com/	<ul style="list-style-type: none"> • Area Studies • History of Science • Human research and BioEthics • Sociology • Social interaction 	IP based
20.	ARDI <i>The Access to Research for Development and Innovation (ARDI) program is coordinated by the World Intellectual Property Organization together with its partners in the publishing industry. ARDI seeks to reinforce the capacity of developing countries to participate in the global knowledge economy; and support researchers in developing countries in creating and developing new solutions to technical challenges faced on a local and global level. Currently, 17 publishers provide access to nearly 10,000 journals, books, and reference works for 107 developing countries through ARDI.</i>	http://www.research4life.org	<ul style="list-style-type: none"> • Currently, 17 publishers provide access to nearly 10,000 journals, books, and reference works for 107 developing countries through ARDI. 	User name: ardi-et005 Password: 8sdk1t3v
21.	OARE <i>Online Access to Research in the Environment (OARE), an international public-private consortium coordinated by the United Nations Environment Programme (UNEP), Yale University, and leading science and technology publishers. Over 4,150 peer reviewed titles (as of 10/2011) owned and published by over 350 prestigious publishing houses and scholarly societies.</i>	http://www.research4life.org	<ul style="list-style-type: none"> • Environmental science research • Environmental Sciences • Biological & Physical Science • Social Sciences 	Ask Librarian
22.	AGORA <i>Access to more than 3000 journals from the world's leading academic publishers.</i>	http://www.research4life.org	<ul style="list-style-type: none"> • Agriculture • Biological Sciences • Environmental Sciences • social sciences 	Ask Librarian
23.	HINARI <i>More than 150 publisher partners are offering more than 37,000 information resources</i>	http://www.research4life.org	<ul style="list-style-type: none"> • Health Sciences • biomedical and related social sciences 	Ask Librarian
24.	IMF e-Library <i>The International Monetary Fund's (IMF) eLibrary simplifies analysis and research with direct access to the IMF's periodicals, books, working papers and studies, and data and statistical tools</i>	http://www.elibrary.imf.org	<ul style="list-style-type: none"> • Macroeconomics • Globalization • Development • trade and aid • technical assistance • demographics, • emerging markets • policy advice • poverty reduction, and so much more 	IP based




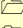
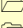
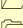
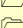
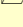

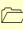
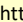
No	Resource Name	URL	Subject Strength	Authentication
25.	Bioone <i>Provides a unique aggregation of high-impact bioscience research journals, featuring timely content on a wide-array of today's most pressing topics, including global warming, stem cell research, ecological and biodiversity conservation.</i>	http://www.bioone.org/	<ul style="list-style-type: none"> • global warming • stem cell research • Ecology • Biodiversity conservation.... 	IP based
26.	Annual Reviews <i>Annual Reviews publications are among the most highly cited in the scientific literature, and are available in print and online to individuals, institutions, and consortia throughout the world.</i>	http://www.annualreviews.org/	<ul style="list-style-type: none"> • Biomedical/life sciences • physical sciences • computer science • physics, chemistry • social sciences • economics, • Sociology • psychology, • law 	IP based
27.	Cambridge Journals <i>provides access to 171 journals dating between 1827 & 1996.</i>	http://journals.cambridge.org	<ul style="list-style-type: none"> • Agriculture • Archaeology • Anthropology • Nutrition • Psychology and Cognitive Science 	IP based
28.	Royal Society journals	http://rsta.royalsocietypublishing.org Philosophical Transactions of the Royal Society series A http://rstb.royalsocietypublishing.org Philosophical Transactions of the Royal Society series B http://rspa.royalsocietypublishing.org Proceedings of the Royal Society series A http://rsph.royalsocietypublishing.org Proceedings of the Royal Society series B http://rsbl.royalsocietypublishing.org Biology Letters http://rsif.royalsocietypublishing.org Journal of the Royal Society Interface http://rsfs.royalsocietypublishing.org Interface Focus	<ul style="list-style-type: none"> • physical and biological sciences 	IP based

No	Resource Name	URL	Subject Strength	Authen tication
		http://rsnr.royalsocietypublishing.org Notes & Records of the Royal Society		
29.	CABI <i>over 187,000 full text journal articles, reports etc in various disciplines</i>	CAB Abstracts – http://www.cabdirect.org/ Crop Protection Compendium – http://www.cabi.org/cp/c/ Animal Health & Production Compendium http://www.cabi.org/ahp/c/ Aquaculture Compendium http://www.cabi.org/ac/ Forestry Compendium – http://www.cabi.org/fc/	<ul style="list-style-type: none"> • Crop Protection Compendium • Animal Health and Production Compendium • Aquaculture Compendium • Forestry Compendium 	
30.	Nature journals	http://www.nature.com/browse/index.html	<ul style="list-style-type: none"> • Chemistry • Clinical Practice & Research • Earth & Environment • Life Sciences • Physical Sciences 	IP based
31.	Cochrane Library <i>The Cochrane Library (is a collection of six databases that contain different types of high-quality, independent evidence to inform healthcare decision-making, and a seventh database that provides information about Cochrane groups.</i>	http://www.cochranelibrary.com	<ul style="list-style-type: none"> • Allergy & intolerance • Blood disorders • Cancer • Child health • Complementary & alternative medicine • Consumer & communication strategies • Dentistry & oral health • Developmental, psychosocial & learning problems • Diagnosis • Ear, nose & throat • Effective practice & health systems • Endocrine & metabolic • Eyes & vision • Gastroenterology • Genetic disorders • Gynaecology • Health & safety at work • Heart & circulation • Infectious disease • Kidney disease • Lungs & airways • Mental health 	IP based

No	Resource Name	URL	Subject Strength	Authen tication
			<ul style="list-style-type: none"> • Methodology • Neonatal care • Neurology • Orthopaedics & trauma • Pain & anaesthesia • Pregnancy & childbirth • Public health • Rheumatology • Skin disorders • Tobacco, drugs & alcohol • Urology • Wounds 	
32.	AIP Scitation AIP Publishing is a wholly owned not-for-profit subsidiary of the American Institute of Physics (AIP). AIP Publishing's mission is to support the charitable, scientific and educational purposes of AIP through scholarly publishing activities in the fields of the physical and related sciences on its own behalf, on behalf of Member Societies of AIP, and on behalf of other publishing partners to help them proactively advance their missions. AIP Publishing's portfolio comprises 19 highly regarded, peer-reviewed journals, including the flagship journals Applied Physics Letters, Journal of Applied Physics, and The Journal of Chemical Physics, in addition to the AIP Conference Proceedings.	http://scitation.aip.org/	<ul style="list-style-type: none"> • Acoustics • Astronomy and astrophysics • Atomic and molecular physics • Biological physics • Condensed matter physics • Energy • General physics • Geophysics • Interdisciplinary physics • Materials science • Mathematical physics • Nanotechnology • Nuclear physics • Optics and optical physics • Particle physics • Physical chemistry • Plasma physics • Quantum mechanics • Rheology and fluid dynamics • Society and organization • Statistical physics 	IP based
HU- Local E- Resources				
33.	Digital Library 16,300 (titles) of books in various disciplines are digitized in full text search format and availed to users.	http://10.10.146.20	<ul style="list-style-type: none"> • All subjects 	
34.	OPAC online public access catalogue The materials in the libraries are automated. Hence, staff and students can search the books in the library anywhere in the campus through the OPAC.	ftp://teeal.haramaya.edu u	<ul style="list-style-type: none"> • All subjects 	
35.	IR+ Institutional Repository ETD Electronic thesis dissertation Our ETD and Repository is central place where theses, researches result and other information product of the university is stored and maintained.	http://10.10.146.245 or On the Internet http://213.55.85.90	<ul style="list-style-type: none"> • All subjects 	

No	Resource Name	URL	Subject Strength	Authen tication
	<i>It is a place where multiple databases or files are located for distribution over a network, or a repository can be a location that is directly accessible to the user without having to travel across a network.</i>			
36.	Teedal Digital Library <i>We have offline access to Digital library for excellence in agricultural research and education, there is also a separate room dedicated to the services it locates on the post graduates Library. Immediate access to hundreds of the top research journals in agriculture and the related sciences</i>	http://10.10.146.240	• Agriculture	

Other Relevant Open Resources

37.  [Freetechbooks](#) (all kinds of books)
 [Amigoreader](#) (all kinds of books)
 [Freemedicaljournals](#)
 [DOAJ](#)
 [Questia](#)
 [Highwire.stanford.edu](#)
 [legacy.intracen.org](#)
 [EIUCountry Reports](#)- in-depth analysis of political and economic trends in nearly 200 countries.
 [Country Profiles](#) - background and historical context of current economic and political events for over 200 countries.
 [African Journals Online \(AJOL\)](#)
 [Free Ebooks Library](#)
<http://elibrary.worldbank.org> world bank e-library

14.2. HAYU FM COMMUNITY RADIO

Haramaya University's community radio, HU FM 91.5, was officially launched on June 6, 2012 with the presence of US Ambassador, Donald Booth, and Ethiopian Broadcasting Authority (EBA) and University's officials. EBA granted Haramaya University a license to establish its own community radio on January 17, 2012. The station started its test transmission on April 5, 2012. The radio station has five permanent staff, and more than 25 volunteer journalists.

HU FM 91.5 broadcast informative, educational, and entertainment program

with in eight hours of transmission per day. The Amharic programs are from 12:00 am – 2:00 pm and from 4:00pm – 6:00pm local time. The Afan Oromo programs are from 7:00 – 9:00 am in the morning and 6:00 – 8:00 pm local time in the evening.

The station is currently using 1000-watt transmitter from HU main campus and 350-watt transmitter from Hakingara (Harar) Retransmitting for Harar town and the surrounding areas.

14.3. ICT SERVICE IN THE UNIVERSITY

The university is making a tremendous effort to strengthen the university ICT

office and it currently provides broadband internet service for undergraduate and postgraduate students. Offices of the staff as well as the staff residents in the campus are also connected to the network and getting 24 hours broadband internet service. In addition, wireless internet services are also available in different places of the university.

TABLE 44: some of ICT facilities available in HU

No.	ICT Service			Total/ Ratio
1.	Advanced Smart Class Rooms with Advanced Interactive White Board			4
2.	Medium Level Smart Classrooms			52
3.	Digital Outdoor Screens			2
4.	Indoor Digital Signage Screens			12
5.	E-learning users (students and Teachers)			4141
6.	Average number of HU website visitors per day			1150
7.	HU (Institutional) e-mail users (staff)			2837
8.	Central Managed Autonomies Wireless System Access (Students, Staff and Guest) Concurrent Users At A Time			5000
9.	Internet nodes (possible simultaneous users; with 104 access switches)			3015
10.	Bandwidth (Internet speed)	Main Campus	Wired	400Mbps
			Wireless	200Mbps
		Harar Campus		100Mbps
		Harar Hiwot Fana		5Mbps
		Referral Hospital		
		Addis Ababa HU		2 Mbps
		Guest House		
11.	Developed software	✓BSC Software Customization ✓Student Dormitory control Management system ✓Property Management system ✓Payroll management system		

12.	Ongoing activities	✓Implementing Network Based Video surveillance system at main Campus ✓Implementing Central Managed Autonomies Wireless System Access for College of Health Science (Harar campus)
-----	--------------------	--

14.4. INVENTORY OF PHYSICAL INFRASTRUCTURE

TABLE 45: PhD Hostels

No.	Building No.	No. of rooms
1	Build (101-112)	12
2	Build (201-212)	12
3	Build (301-312)	12
4	Build (401-412)	12
5	Build (501-512)	12
6	Build (1-4) G+1	4
7	Build (5-8) G+1	4
8	Build (9-12) G+1	4
9	Build (13-16) G+1	4
10	1-16	4
11	101-312	12
12	Block1-5(safer)	60
13	PhD Hostel(main campus)	60
Total		212

TABLE 46: Laboratories

No.	Building no	No. of lab
1	403	6
2	404	6
3	405	7
4	406	8
5	407	4
6	408	1
7	V	10
8	XIII	8
9	XIV	6
10	XV	6
11	COA	16
12	IOT	6
13	FVM	6
14	Health	6
Total		96

TABLE 47: Classrooms& offices (Main campus)

No	Building No.	No. of Offices	No of Class	No of Lecture halls
1.	403	11	2	
2.	404	6	4	1
3.	405	23	2	2
4.	406	13	-	2
5.	407	23	1	2
6.	408	15	3	1
7.	SGS II	28	4	-
8.	V	18	1	2
9.	VI	19	6	-
10.	VII	12	6	
11.	VIII	-	12	-
12.	IX	15	-	-
13.	X	-	12	4
14.	XI		12	-
15.	XII	-	12	-
16.	XIII	20	-	-
17.	XIV	15	-	-
18.	XV	15	-	-
19.	COA	77	14	-
20.	FVM	15	-	-
21.	105 (hall)	-	-	1
22.	Staff office at veterinary campus	22	-	-
23.	Administration building at veterinary campus	108	-	-
24.	G+1 office building at main campus	132	-	-
25.	Class room at veterinary campus	-	40	4
26.	Class room at IOT campus	-	40	4
27.	Botanical Office	10	-	-
28.	Moot court	2	-	1
29.	Academic Building	66	9	12
30.	Academic Building at IOT Campus	66	9	12
31.	Sport Academy		26	
Total		833	215	50

TABLE 48: Dormitories in the main campus

Dormitories	Capacity	No. of rooms	Office
Haramaya			
Building I (201)	396	33	7
Building II(202)	420	35	6
Building III	625	125	1
204White House	306	51	1
DMC 2A	424	69	2
DMC 2B	418	68	1
205-Wing A	276	69	1
205-Wing b	276	69	2
206-SGS 1	120	30	1
206-SGS 2	96	48	1
207-Twinse A	174	29	2
207-TwinseB	174	29	1
208-SAT 2A	340	68	2
208-SAT 2B	408	69	3
209-A	414	69	2
209-B	284	69	2
210 SAT-3A	284	69	1
210 SAT 3B	284	69	1
211A	284	69	2
211B	350	69	2
212A	408	68	3
212B	414	68	3
SAWA-A	234	9	-
SAWA-B	260	10	4
SAWA-C	234	9	4
SAWA-D	260	10	4
Veterinary campus	2080	520	2
IOT campus	2080	520	2
Amal Dormitories	2400	400	6
Afro-tsion Dormitories	2128	376	4
Sport academy	186	31	12
Total	17037	3227	85

TABLE 49: Staff residences (Apartment blocks)

Building No	Number of bed rooms			
	3	2	1	0
Apart A (323)	12	-	-	-
Apart B (324)	12	-	-	-
Apart C (343)	-	12	4	-
Apart D (354)	-	12	4	-
Apart E (355)	2	4	6	3
Apart F (356)	2	4	6	3
Apart G (357)	2	4	6	3
Apart H (358)	2	4	6	3
Apart K	2	4	6	3
Apart L	2	4	6	3
Apart M	2	4	6	3
Apart I(Harar)	-	12	4	-
Apart J(Harar)	2	4	6	3
Emnete Staff Apart(N,O,P,Q,R)	10	20	30	15
Bachelor staff Residence(Cobalt)	1	60	60	-
Total	51	148	150	39

TABLE 50: Staff residences (Villas)

No.	Building	Number of buildings
1	Villas with 2 bed rooms	14
2	Villas with 3 bed rooms	22
3	Villas with 4 bed rooms	2
Total		38

TABLE 51: Offices (in different places)

No	Building No.	Offices	No. of hall	Cafeteria
1	402	48	-	-
2	New Admin	46	1	1
3	Harar Camp	54	1	1
Total		148	2	2

TABLE 52: Other small Resident structures

No.	Building Number	Number of rooms
1	340	14
2	303	6
3	342	13

4	345	14
5	346	6
6	347	31
7	348-MT	10
8	353	9
9	AB	10
10	MW	20
Total		153

TABLE 53: Infrastructures in Hiwot Fana Hospital

No.	Building No.	No.of Rooms
1.	BLOCK A	136
2.	BLOCK B	33
3.	BLOCK C	4
4.	BLOCK D	4
5.	BLOCK E	35
6.	BLOCK F	24
7.	BLOCK G	19
8.	BLOCK H	15
9.	BLOCK I	13
10.	BLOCK J	3
11.	BLOCK K	8
12.	Store	2
13.	Drug Store	8
14.	OPD	40
15.	Kitchen	4
TOTAL		352

TABLE 54: Buildings in Chiro Campus

Building Name	Office rooms	Class rooms	Dormitories	Residence	Others
BO1	7	-	-	-	-
BO2	2	-	-	-	-
BO3	4	-	-	-	-
BO4	4	-	-	-	-
BO5	4	-	-	-	-
BC1	-	4	-	-	-
BC2	-	4	-	-	-
BC3	-	4	-	-	-
BP(Poultry & Diary house)	-	-	-	-	3
BS (Store)	-	-	-	-	2
BD1	-	-	4	-	-
BD2	-	-	4	-	-

BD3	-	-	10	-	-
BD4	-	-	10	-	-
BD5	-	-	11	-	-
BMP (Multi-Purpose)	-	-	-	-	2
BR	-	-	-	10	-
BW(Workshop)	-	-	-	-	2
Class Room		40			
Bereka Dormitory			192		
Dinning					2
Student Lounge					2
Kitchen					2
TOTAL	21	52	231	10	15

TABLE 55: Additional buildings in Harar Campus

Building Name	Office rooms	Class rooms	Dormitories	Residence	Others
Block 1	33	-	-	-	-
Block 2	-	-	-	28	-
Block 3	-	-	-	-	23
Block 4	54	-	-	-	-
Block 5	-	-	-	-	12
Block 6	-	-	40	-	-
Block 7	-	-	20	-	-
Block 8	-	-	19	-	-
Block 9	-	4	-	-	-
Block 10	20	-	-	-	-
Block 11	8	-	-	-	-
Block 12	20	-	-	-	-
Block 13	-	-	51	-	-
Block 14	-	-	51	-	-
Block 15	-	-	51	-	-
Block 16	-	4	-	-	-
Block 17	6	-	-	-	-
Block 18	-	20	-	-	-
Block 19	-	-	55	-	-
Total	141	28	287	28	35

TABLE 56: Clinic

No	Building	No of rooms	office
1	Clinic at Veterinary campus	9	1
2	Higher clinic at main campus	14	3
3	Clinic at IOT campus	9	1
4	Clinic at Chiro campus	9	1
5	Clinic at Harar campus	9	1
Total		50	7

Table 57: Other Building

No	Building	capacity	no of room
1	Main Gate IOT& Veterinary Campus	-	-
2	Water Supply Expansion	1300lit	-
3	Construction of Nursery School	150	6
4	Construction of Library at model school	300	3
5	Goat shelter	200	4
6	Kitchen building at veterinary campus	-	6
7	Dinning building at veterinary campus	660	1
8	Slaughter Blocks at main campus	8	4
9	police station at main campus	-	5
10	SGS Building At Harer Campus	1310	55
11	Radio Station	-	9
12	Student lounge at IOT	100	4
13	Student lounge at veterinary	100	4
14	Store building at veterinary	-	5
15	Grand convention center at main campus	3500	26
16	Milling House at Main Campus &Harar	4	8
17	Cafeteria Block at IOT	300	8
18	Printing Press		22
19	Mixed Use Building		35

15. ANNUAL BUDGET FROM GOVERNMENT TREASURY AND ITS UTILIZATION

TABLE 58: Annual budget from the government treasury and its utilization in 2016/17

No	Program	Annual Budget			Fiscal plan achievement in %
		Budget allocated in Birr	Utilized Budget in Birr	Budget Utilization Rate	
1.	Administration	303,076,500.00	303,076,500.00	100	80.10
2.	Academic	433,133,800.00	433,000,000.00	99.97	89.00
3.	Research	24,520,000.00	24,420,000.00	99.59	92.50
4.	Community Engagement & enterprise Development	63,507,449	63,505,849	99.99	83.26
5.	Capital Budget	750,000,000.00	750,000,000.00	100	
Total		1,317,762,072.00	1,317,701,837.50	100	

PERFORMANCE ACHIEVEMENT

The university stood 3rd among the first generation Ethiopian public universities based on the 2009 E.C. performance evaluation made by the Ministry of Education.



CONGRATULATIONS!

Our University Stood 3rd Among the 1st Generation Ethiopian Public Universities



Building the basis for Development



