



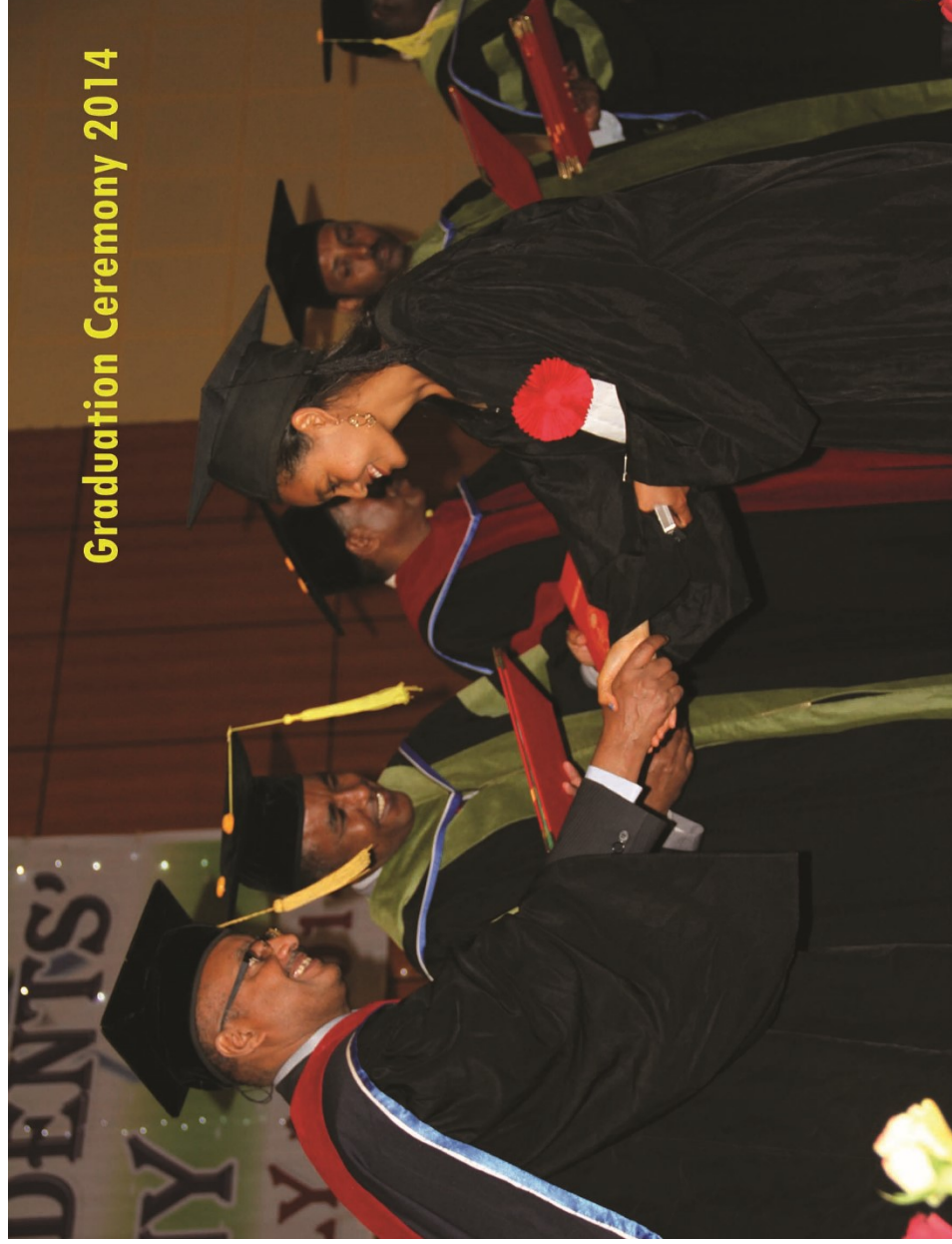
# HARAMAYA UNIVERSITY

## FACTS AND FIGURES

### 2013/14

[www.haramaya.edu.et](http://www.haramaya.edu.et)

## Graduation Ceremony 2014





# **HARAMAYA UNIVERSITY**

## **FACTS AND FIGURES**

### **2013/14**

*Prepared By: Strategic Management and Institutional Transformation  
Directorate*

[www.haramaya.edu.et](http://www.haramaya.edu.et)

SMITD@haramaya.edu.et

# Table of Contents

List of Tables	iii
List of Abbreviations And Acronyms	v
Haramaya University's Mission and Vision	vi
1. Historical Background of the University	1
2. Goal of the University	3
3. Mission statement	3
4. Vision of the University	3
5. Organizational Structure of Haramaya University	4
6. Academic Units of the University	6
6.1. Regular Undergraduate Academic Programs	6
6.2. College of Continuing and Distance Education (CCDE) Undergraduate Programs	8
6.2.1 Continuing Education	8
6.2.2. Distance Education	8
6.2.3 Summer Education	9
6.3 The School of Graduate Studies (SGS)	9
6.3.1 Regular Masters Programs	9
6.3.2 Regular PhD Programs	10
6.3.3 Summer Masters Programs	11
6.3.4. Continuing Education Masters Programs	12
7. Admission	12
7.1 Admissions to Undergraduate programs	12
7.1.1 Admission to Regular Undergraduate Programs	12
7.1.2. Admission as Part-time Students	13
7.1.3. Special Admission	13
7.1.4. Admission to the continuing and distance education programs	14
7.2.1. Admission to Regular Graduate (Masters and PhD) Programs	17
7.2.2. Admissions to Continuing, Distance and Summer Education Graduate Programs	18
8. Regular Students' Enrollment in 2013/14	19
8.1. Regular Undergraduates Enrollment Disaggregated by Departments	19
8.2 Regular Postgraduates Enrollment	21
9. College of Continuing and Distance Education Students' Enrollment	23
9.1. Undergraduate Enrollment in CCDE	23
9.1.1 Distance Students Enrollment	23
9.1.2 Continuing Education Students Enrollment	23

9.1.3 Summer Students Enrollment	23
<b>9.2 Postgraduate Enrollment in CCDE</b>	<b>24</b>
10. Graduation Statistics in 2013/14	24
11. Staff Profile of the University	26
11.1. Local Academic Staff of the University (on duty only) (2013/14)	26
11.2 Expatriate Academic Staff of the University (2013/14)	27
11.3 Academic Staffs on Study Leave (2013/14)	27
11.4 Administrative Staff Profile (2013/14)	29
12. HU in Research	29
13. HU in Community Service	29
14. Sport in HU	31
15. University Facilities	31
15.1 Different Services	31
15.2. Library and Information Services	35
15.3. About HU 91.5 FM Radio	45
15.4. Internet Service in the University	46
16. Inventory of physical Infrastructure	46
17. Annual Budget from Government Treasury and its Utilization	50

## List of Tables

Table 1: <i>Summary of Programs Offered in 2013/14</i> .....	6
Table 2: <i>Regular undergraduate programs under CAES</i> .....	6
Table 3: <i>Regular undergraduate programs under CBE</i> .....	6
Table 4: <i>Regular undergraduate programs under CCI</i> .....	6
Table 5: <i>Regular undergraduate programs under CHMS</i> .....	7
Table 6: <i>Regular undergraduate programs under CSSH</i> .....	7
Table 7: <i>Regular undergraduate programs under COL</i> .....	7
Table 8: <i>Regular undergraduate programs under CVM</i> .....	7
Table 9: <i>Regular undergraduate programs under CNCS</i> .....	7
Table 10: <i>Regular undergraduate programs under IOT</i> .....	7
Table 11: <i>Regular undergraduate programs under CEBS</i> .....	7
Table 12: <i>Regular undergraduate programs under CaiLR</i> .....	8
Table 13: <i>Undergraduate Continuing Education Programs</i> .....	8
Table 14: <i>Undergraduate Distance Education Programs</i> .....	8
Table 15: <i>Undergraduate Summer programs</i> .....	9
Table 16: <i>Regular Masters Programs</i> .....	9
Table 17: <i>Regular PhD Programs</i> .....	10
Table 18: <i>Summer Masters Programs</i> .....	11
Table 19: <i>Continuing Education Masters</i> .....	12
Table 20: <i>University wide Students' Enrollment in 2013/14</i> .....	19
Table 21: <i>Regular CAES student enrollment</i> .....	19
Table 22: <i>Regular CNCS student enrollment</i> .....	20
Table 23: <i>Regular CSSH student enrollment</i> .....	20
Table 24: <i>Regular CBE student enrollments</i> .....	20
Table 25: <i>Regular CHMS student enrollment</i> .....	20
Table 26: <i>Regular CCI student enrollment</i> .....	20
Table 27: <i>Regular IOT student enrollment</i> .....	20
Table 28: <i>Regular COL student enrollment</i> .....	21
Table 29: <i>Regular CVM student enrollment</i> .....	21
Table 30: <i>Regular CEBS student enrollment</i> .....	21
Table 31: <i>Regular CaiLR student enrollment</i> .....	21

---

Table 32: <i>Students enrollment in Higher Diploma program</i> .....	21
Table 33: <i>Regular masters programs Enrollment</i> .....	21
Table 34: <i>PhD programs Enrollment</i> .....	22
Table 35: <i>DEP Students Enrollment</i> .....	23
Table 36: <i>CEP student's enrollment</i> .....	23
Table 37: <i>SEP Students enrollment</i> .....	23
Table 38: <i>summer and continuing postgraduate enrollment</i> .....	24
Table 39: <i>Number of students' graduated in 2013/14</i> .....	24
Table 40: <i>Local Academic Staff of the University (on duty only)</i> .....	26
Table 41: <i>Expatriate Academic Staff of the University</i> .....	27
Table 42: <i>Academic staffs on study leave</i> .....	27
Table 43: <i>Permanently employed administrative staffs</i> .....	29
Table 44: <i>Number of beneficiaries from the outreach service (improved seed distributed by HU)</i> .....	30
Table 45: <i>Types of free legal services of HU and number of beneficiaries in 2013/14</i> .....	30
Table 46: <i>Seat Capacity and Internet Access</i> .....	36
Table 47: <i>The major journal databases in the university library</i> .....	38
Table 48: <i>PhD Hostels</i> .....	46
Table 49: <i>Laboratories</i> .....	46
Table 50: <i>Classrooms and offices (Main campus)</i> .....	47
Table 51: <i>Dormitories in the main campus</i> .....	47
Table 52: <i>Staff residences (Apartment blocks)</i> .....	47
Table 53: <i>Staff residences (Villas)</i> .....	48
Table 54: <i>Offices (in different places)</i> .....	48
Table 55: <i>Other small Resident structures</i> .....	48
Table 56: <i>Infrastructures in Hiwot Fana Hospital</i> .....	48
Table 57: <i>Buildings in Chiro Campus</i> .....	48
Table 58: <i>Additional buildings in Harar Campus</i> .....	49
Table 59: <i>Clinic</i> .....	49
Table 60: <i>Other Buildings</i> .....	49
Table 61: <i>Annual budget from the government treasury and its utilization in 2013/14</i> .....	50

---

## List of Abbreviations And Acronyms

<i>AU</i>	<i>Alemaya University</i>
<i>B.Sc</i>	<i>Bachelor of Science</i>
<i>BA</i>	<i>Bachelor of Art</i>
<i>CAES</i>	<i>College of Agriculture and Environmental Science</i>
<i>CAiLR</i>	<i>College of Agro Industry and Land Resource</i>
<i>CBE</i>	<i>College of Business And Economics</i>
<i>CCDE</i>	<i>College of Continuous and Distance Education</i>
<i>CCI</i>	<i>College of Computing And Informatics</i>
<i>CEBS</i>	<i>College of Education And Behavioral Sciences</i>
<i>CEP</i>	<i>Continuing Education Program</i>
<i>CGS</i>	<i>Council of Graduate Studies</i>
<i>CHMS</i>	<i>College of Health &amp;Medical Science</i>
<i>CNCS</i>	<i>College of Natural And Computational Sciences</i>
<i>COC</i>	<i>Certificate of Competency</i>
<i>COL</i>	<i>College of Law</i>
<i>CSSH</i>	<i>College of Social Sciences &amp; Humanities</i>
<i>CVM</i>	<i>College of Veterinary Medicine</i>
<i>DEP</i>	<i>Distance Education Program</i>
<i>DVM</i>	<i>Doctor of Veterinary Medicine</i>
<i>APC</i>	<i>Admission and Placement Committee</i>
<i>RDAE</i>	<i>Rural Development and Agricultural Extension</i>
<i>GPC</i>	<i>Graduate Program Committee</i>
<i>HU</i>	<i>Haramaya University</i>
<i>IECAMA</i>	<i>Imperial Ethiopian College Of Agricultural And Mechanical Arts</i>
<i>ILT</i>	<i>Institute of Land Tenure</i>
<i>IOT</i>	<i>Institute of Technology</i>
<i>IPDS</i>	<i>Institutes of Peace And Development Studies</i>
<i>LLB</i>	<i>Bachelor of Law</i>
<i>M.A</i>	<i>Master of Art</i>
<i>M.Ed</i>	<i>Master of Education</i>
<i>M.Sc</i>	<i>Master of Science</i>
<i>MPh</i>	<i>Master of Public Health</i>
<i>RAC</i>	<i>Recruitment And Admission Committee</i>
<i>SEP</i>	<i>Summer Education Program</i>
<i>SGS</i>	<i>School of Graduates Studies</i>
<i>ASQAC</i>	<i>Academic Standard and Quality Assurance Committee</i>
<i>PGDT</i>	<i>Post graduates Diploma Program</i>
<i>FLSC</i>	<i>Free Legal Service Center</i>



## Haramaya University's Mission and Vision

### Mission

*The Mission of Haramaya University is to produce competent graduates in diverse fields of study, undertake rigorous, problem solving and cutting edge researches, disseminate knowledge and technologies, and provide demand-driven and transformative community services.*

### Vision

*Haramaya University strives to be one of the leading African Universities with international reputation by 2025.*

## 1. Historical Background of the University

Haramaya University has gone through a series of transformations since its establishment as a higher learning institution. The agreement signed between the Imperial Ethiopian Government and the Government of the United States of America on May 15, 1952 laid the foundations for the establishment of Jimma Agricultural and Technical School and the Imperial College of Agricultural and Mechanical Arts (IECAMA). The Agreement between the Government of Ethiopia and the Technical Cooperation Administration of the Government of the United States of America, signed on May 16, 1952, gave the mandate to Oklahoma State University to establish and operate the College, conduct a nationwide system of Agricultural Extension and set up an agricultural research and experimental station.

Based on the Emperor's wish, it was decided to establish the College at its current location at Haramaya. Later on, the agreement signed between the United States Department of States and the Imperial Government provided the basis for the operation of Jimma Agricultural and Technical School that received its first class of eighty students in October 1952. Nineteen of the students graduated on August 6, 1953 and became the first freshman students of the Imperial Ethiopian College of Agricultural and Mechanical Arts (IECAMA). The IECAMA opened its doors to its first batch of students in October 1956 and

the senior class moved from Addis Ababa to Alemaya for their final semester. At the end of the 1956/57 academic year, eleven students completed their studies and graduated with a B.Sc. degree in General Agriculture. The training programs in Agriculture were further specialized and B.Sc. programs were introduced in Animal Sciences (1960), Plant Sciences (1960), Agricultural Engineering (1961) and Agricultural Economics (1962).

Until 1963, the college was virtually dependent on Oklahoma State University, both administratively and academically; however, after 1966, when the first Ethiopian dean was appointed, the role of Americans was limited to advisory and technical support. The College became a chartered member of Addis Ababa University (the then Haile Selassie I University), following the contractual termination of Oklahoma State University in 1968. Consequently, it was named Alemaya College of Agriculture. Due to the great need of trained manpower in other areas of study, additional programs that included a diploma program in Home Economics (1967), Science Teachers' Training Program (1978), and Continuing Education Program (1980) were launched.

A major landmark in the history of the College of Agriculture was the launching of graduate study programs in the 1979/80 academic year. This laid the foundation for advanced academic and research work at the institution. When graduate studies were launched, about 29

students were enrolled to study various fields of agriculture.

Another major landmark in the history of Alemaya College of Agriculture was when it was upgraded to university status on May 27, 1985, followed by the launching of the Faculty of Forestry in 1987. It was then named Alemaya University of Agriculture that produced qualified manpower in the fields of Animal Sciences, Plant Sciences, Agricultural Economics, Agricultural Engineering, Agricultural Extension and Forestry both at graduate and undergraduate levels. Moreover, in the continuing education program, diploma-level training programs were delivered in Accounting and Management, in Dire Dawa and Harar centers.

The university once again went through another phase of transformation during the 1995/96 academic year by launching new programs in the fields of Teacher Education and Health. The opening of the two faculties, namely the Faculty of Education and the Faculty of Health Sciences, further diversified the existing programs, and enabled the institution to become a full-fledged university that was renamed Alemaya University (AU).

In the last few years, the University has witnessed tremendous expansion in terms of fields of study. In September 2002, two more faculties, namely Faculty of Law and Faculty of Business and Economics, were opened. Furthermore, Faculty of Veterinary Medicine and Faculty of Technology were initiated in 2003 and 2004, respectively to further diversify the training programs of the

university. The institution was renamed Haramaya University in February 2006.

The University, apart from undergraduate programs, has been highly engaged in the expansion and diversification of graduate programs. Currently, the previous Faculties were reorganized into 11 Colleges and one institute namely, College of Agriculture and Environmental Science (CAES), College of Business and Economics(CBE), College of Computing and Informatics (CCI), College of Health and Medical Sciences (CHMS), College of Social Sciences and Humanities(CSSH), College of Law(COL), College of Veterinary Medicine(CVM), College of Natural and Computational Sciences (CNCS), College of Education and Behavioral Sciences(CEBS), College of Agro-industry and Land Resource (CAiLR) College of Continuing and Distance Education (CCDE) and Institute of Technology (IOT). Under these divisions, the University offers a total of 264 programs of which 113 are undergraduate programs, 131 are second degree (M.Sc./M.Ed./MPH) and 20 are PhD level training programs. In addition to academic programs, the university has launched institutes that cater research and outreach programs. These include the Institute of Pastoral and Agropastoral Studies (IPAS), Institutes of Peace and Development Studies (IPDS), and Institute of Land Tenure (ILT).

The University has been actively involved in research activities, primarily in the fields of agriculture, since its

inception. Through the years, the institution has established linkages with national and international organizations to strengthen its academic, research and outreach activities. As a pioneer institution of agricultural education, research and extension in Ethiopia for about six decades, the University has been developing and releasing several improved crop varieties and many improved crop and livestock management practices. The institution has produced many textbooks, book chapters, research articles, bulletins, proceedings, posters and a number of PhD dissertations and master thesis research reports. Even if the research and outreach activities of the university in fields other than agriculture are recent phenomena, encouraging research results are being produced in the areas of health, law, education, business, economics and others. In order to increase the impact of research and outreach activities, the university has grouped its research in to 6 major themes and the outreach activities are being led by the community service road map.

The University is now functioning on three campus premises. The main campus, where the first milestone was laid, is Haramaya Campus. This campus is located at about 510 km East of Addis Ababa, between Dire Dawa and Harar towns. This is the nerve center of the University where the offices of the top management of the institution are located. The second Campus is located in Harar Town where College of Health and Medical Sciences and Hiwot Fana Specialized University Teaching

Hospital are situated. The third one is Chiro Campus located in Chiro Town, where the College of Agro-industry and Land Resource is found.

## **2. Goal of the University**

The goal of Haramaya University is to evolve as an autonomous and independent (academic and research institution) graduate and research university with a competitive national and international quality and relevance standards in its academic, research and community services endeavours.

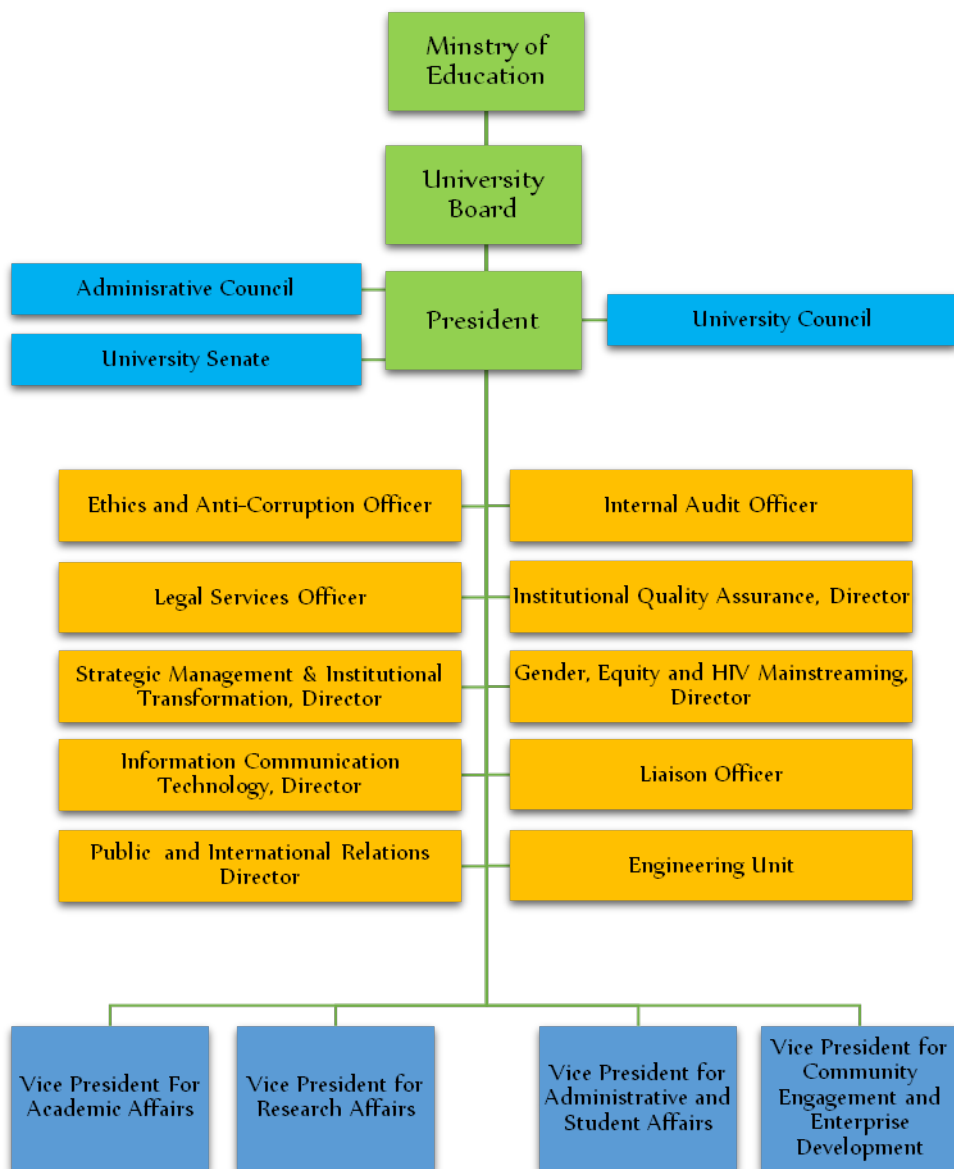
## **3. Mission statement**

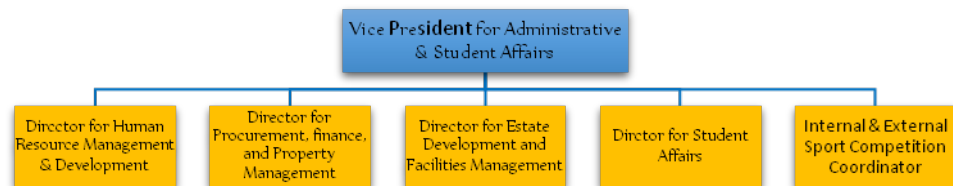
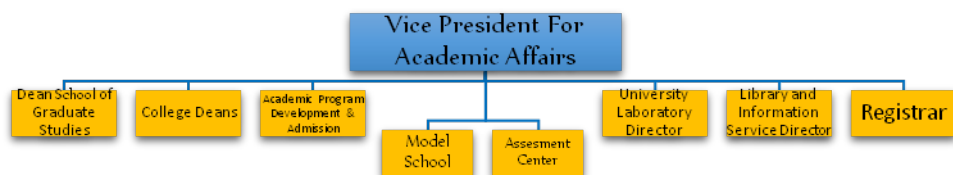
The Mission of Haramaya University is to produce competent graduates in diverse fields of study, undertake rigorous, problem solving and cutting edge researches, disseminate knowledge and technologies, and provide demand-driven and transformative community services.

## **4. Vision of the University**

Haramaya University strives to be one of the leading African Universities with international reputation by 2025.

## 5. Organizational Structure of Haramaya University





## 6. Academic Units of the University

In 2013/14 academic year, the University ran different programs at PhD, M.Sc./M.Ed./Mph, and B.Sc./BA/DVM/LLB levels. The following table shows the number of academic programs offered under different Colleges in 2013/14.

**Table 1: Summary of Programs Offered in 2013/14**

Program	under graduate	postgraduate		Total
		Masters	PhD	
Regular	67	75	20	162
CEP	12	6		18
Summer	25	50		75
Distance	9	-	-	9
<b>Total</b>	<b>113</b>	<b>131</b>	<b>20</b>	<b>264</b>

### 6.1. Regular Undergraduate Academic Programs

The academic undergraduate programs offered by regular program in 2013/14 have been listed under different colleges in subsequent tables.

**Table 2: Regular undergraduate programs under CAES**

School/Departments	Programs
School of Animal and Range Science	Animal Science
	Range Ecology and Biodiversity
School of Natural Resources and Environmental Science	Natural Resource Management
	Environmental Science

School of Plant Sciences	Plant Science
	Sugarcane Agronomy
School of Agricultural Economics and Agribusiness	Agricultural Economics
	Agribusiness and Value Chain Management
Department of Rural Development and Agricultural Extension	Rural Development and Agricultural Extension (Regular)
	Rural Development and Agricultural Extension (Midcareer)

**Table 3: Regular undergraduate programs under CBE**

School/Departments	Programs
Department of Accounting	Accounting
Department of Cooperatives	Cooperatives
Department of Management	Management
Department of Economics	Economics
Department of Public Administration and development management	Public Administration and development management

**Table 4: Regular undergraduate programs under CCI.**

School/Departments	Programs
Department of Computer Science	Computer Science
School of Information Systems	Information Systems
Department of Information Sciences	Information Science
Department of Statistics	Statistics
Department of Software Engineering	Software Engineering
Department of Information Technology	Information Technology
Department of Management information system	Management information system*

\*Closed by the university senate and runs only until the existing students graduate

**Table 5: Regular undergraduate programs under CHMS**

School/Departments	Programs
School of Nursing and Midwifery	Nursing
	Midwifery
	Psychiatry
Department of Public Health	Public Health
Department of Environmental Health	Environmental Health Science
School of Medicine	Medicine
School of Pharmacy	Pharmacy
Department of Medical Laboratory Sciences	Medical Laboratory Sciences

**Table 6: Regular undergraduate programs under CSSH**

School/Departments	Programs
School of Foreign Languages and Journalism	English Language and Literature
	French Language and Literature
	Journalism and Mass Communication
Department of Afan Oromo	Afan Oromo and Literature
Department of Sociology	Sociology
School of Geography and Environmental Science	Geography and Environmental Studies
	Urban Planning
	Geo- Information Sciences
Department of History and Heritage Management	History and Heritage Management
Department of Gender and Development	Gender and Development

**Table 7: Regular undergraduate programs under COL**

School/Departments	Programs
College of Law	Law

**Table 8: Regular undergraduate programs under CVM**

School/Departments	Programs
--------------------	----------

Department of Veterinary Medicine	Doctor of Veterinary Medicine
-----------------------------------	-------------------------------

**Table 9: Regular undergraduate programs under CNCS**

School/Departments	Programs
Department of Biology	Biology
Department of Chemistry	Chemistry
Department of Physics	Physics
Department of Sport Sciences	Sport Sciences
Department of Mathematics	Mathematics

**Table 10: Regular undergraduate programs under IOT**

School/Departments	Programs
Department of Civil and Urban Engineering	Civil and Urban Engineering
Department of Electrical and Computer Engineering	Electrical and Computer Engineering
Department of Chemical Engineering	Chemical Engineering
Department of Mechanical Engineering	Mechanical Engineering
Department of Food Science and Post-harvest Technology	Food Science and Post-harvest Technology
	Food Technology and Process Engineering
School of Natural Resource and Environmental Engineering	Hydraulics and Water Resource Engineering
	Water resource and irrigations Engineering
	Agricultural Engineering

**Table 11: Regular undergraduate programs under CEBS**

School/Departments	Programs
Department of Educational Planning and Management	Educational Planning and Management
Department of	Special Needs and



Special Needs and Inclusive Education	Inclusive Education
Department of Psychology	Psychology
Department of Adult Education and Community Development	Adult Education and Community Development
Postgraduate Diploma Program	Postgraduate Diploma in Secondary School Teaching (PGDT)
	Postgraduate Diploma in School Leadership (PGDSL)
	Postgraduate Diploma in Higher Education Teaching (PGDHET)
Other Programs	Higher Diploma Program (HDP)
	English Language Improvement Center (ELIC)

**Table 12: Regular undergraduate programs under CAiLR**

School/Departments	Programs
Department of Forest Resource mgmt	Forest Resource Management
Department of Dairy & Meet Technology	Dairy & Meet Technology
Department of Irrigation Technology	Irrigation Engineering
Department of land administration	Land Administration
<b>DA Upgrading</b>	
Department of Animal Science	Animal Science
Department of Plant Science	Plant Science
Department of Natural Resource	Natural Resource

## 6.2. College of Continuing and Distance Education (CCDE) Undergraduate Programs

There are three programs in the College of Continuing and Distance

Education Program: Continuing Education Program (CEP), Distance Education Program (DEP), and Summer Education Programs (SEP).

### 6.2.1 Continuing Education

The college offers continuing education programs in Dire Dawa, Harar, Chiro and Jijiga centers. The following degree programs are offered under this program.

**Table 13: Undergraduate Continuing Education Programs**

No	Program	College
		<b>CAES</b>
1	Rural Development and Agricultural Extension	
		<b>CEB</b>
2	Accounting	
3	Management	
4	Economics	
5	Public Administration	
		<b>CMHS</b>
6	Nursing	
7	Pharmacy	
		<b>COL</b>
8	Law	
		<b>CSSH</b>
9	Sociology	
		<b>IOT</b>
10	Civil Engineering	
11	Electrical Engineering	
		<b>CCI</b>
12	Computer Science	

### 6.2.2. Distance Education

The University conducts Distance Education Programs at Harar, Shashemene, Chiro, Adama, Ambo Addis Ababa, Asella, Wolaytasodo and Fiche centers in the following fields of studies.

**Table 14: Undergraduate Distance Education Programs**

No	Program
1	Accounting

2	Agricultural Economics
3	Economics
4	Horticultural Business
5	Law generic
6	Law upgrade
7	Management
8	Natural Resource Management
9	Rural Development and Agricultural Extension

### 6.2.3 Summer Education

All fields of studies that are given in the regular program could also be offered in the summer program provided that the numbers of students are sufficient enough to run the program. In 2013/14, the following fields of studies have been offered at undergraduate levels.

**Table 15: Undergraduate Summer programs**

No	Program	College
CAES		
1	Agricultural Economics	
2	Animal Science	
3	Natural Resource Management	
4	Plant Sciences	
5	Rural Development and Agricultural Extension	
CBE		
6	Cooperatives	
CHMS		
7	Environmental Health Science	
8	Medical Lab Technician	
9	Nursing	
10	Midwifery	
CNCS		
11	Biology	
12	Chemistry	
13	Mathematics	
14	Physics	
15	Sport Science	
CEBS		
16	Special Needs Education	
17	Educational Planning & Management	
CSSH		
18	English	

19	Geography and Environmental Studies
20	Afan Oromo
21	Gender and Development
22	History and Heritage Management
IOT	
23	Soil and Water Engineering
CVM	
24	Veterinary Medicine
CCI	
25	Information Technology

## 6.3 The School of Graduate Studies (SGS)

The School of Graduate Studies offer PhD, M.Sc. /M.Ed. and Mph. degrees in regular, summer, and continuing education programs. The following fields of specialization are offered at PhD, MSc/Med and Mph levels in these programs.

### 6.3.1 Regular Masters Programs

**Table 16: Regular Masters Programs**

No.	Program
College of Agriculture & Environmental Science	
1	Agricultural communication & Information Management(MSc)
2	Agricultural Economics(MSc)
3	Agricultural Entomology(MSc)
4	Agricultural & Food Marketing(MSc)
5	Agro forestry & Soil Management(MSc)
6	Agronomy(MSc)
7	Animal Breeding & Genetics(MSc)
8	Animal Nutrition (MSc)
9	Animal Production (MSc)
10	Dairy Science(MSc)
11	Horticulture(MSc)
12	Integrated Pest Management(MSc)
13	Irrigation Agronomy(MSc)
14	Plant Breeding(MSc)
15	Plant pathology(MSc)
16	Range Ecology and Biodiversity (MSc)
17	Rural Development & Agricultural Extension (MSc) (Agricultural Communication & Innovation, and Rural development Streams)

18	Seed Science & Technology(MSc)
19	Soil Sciences(MSc)
20	Weed Sciences(MSc)
21	Dairy Technology(MSc)
22	Agro Meteorology And Natural Risk Management(MSc)
23	Environmental Science and Management
24	Agribusiness and Value Chain Management(MSc)
<b>Institute of Technology</b>	
25	Agricultural Machinery (MSc)
26	Agricultural Mechanization (MSc)
27	Food Engineering (MSc)
28	Food Sciences & Technology(MSc)
29	Irrigation Engineering(MSc)
30	Post-harvest Technology(MSc)
31	Soil & Water Conservation Engineering(MSc)
<b>College of Natural and Computational Sciences</b>	
32	Applied Biology (MSc)
33	Biology Education (MEd)
34	Biotechnology(MSc)
35	Botany (MSc)
36	Chemistry(MSc)(Organic; Inorganic; Physical; Analytical streams
37	Chemistry Education (MEd)
38	Coaching Science& Rehabilitation Therapy(MSc)
39	Genetics(MSc)
40	Masters of Sciences in Biology Education (MSc)
41	Masters of Sciences in Chemistry Education (MSc)
42	Masters of Sciences in Physics Education (M.Sc.)
43	Mathematics (MSc)
44	Mathematics Education (MEd)
45	Microbiology (MSc)
46	Physics (MSc) (Environmental Physics; Quantum Physics; Computational Physics; and Medial Physics)
47	Physics Education (MEd)
48	Sport Nutrition (MSc)
49	Sport Medicine (MSc)
<b>College of Computing and Informatics</b>	
50	Information Science (MSc)
51	Statistics (MSc) (Econometrics; Biometrics Streams)
<b>College of Social Sciences &amp; Humanities</b>	
52	Afan Oromo (MA)
53	Afan Oromo (MEd)

54	English as a Foreign Language Studies (MA in TEFL)
55	English Education (MEd)
56	Geography & Environmental Studies(MA)
57	Geography& Environmental Studies(MEd)
58	History (MA)
59	Sociology(MA)
<b>College of Education &amp; Behavioral Sciences</b>	
60	Educational Leadership (MA)
61	Educational Leadership and Management (MA)
62	School Leadership (MA)
63	Social Psychology (MA)
64	Special Needs and Inclusive Education (MA)
65	Curriculum Studies (MA) (with streams in Curriculum and Quality Assurance; Curriculum Evaluation and Research; and Curriculum and Instruction)
<b>College of Health and Medical Sciences</b>	
66	Public Health(MPH) (General Health, Reproductive Health, Epidemiology, Health Science Management; Nutrition tracks)
67	Adult Nursing (MSc)
68	Integrated Emergency Surgery (MSc)
69	Medical Microbiology(MSc)
70	Water Supply and Sanitation management (MSc)
<b>College of Veterinary Medicine</b>	
71	Veterinary Epidemiology(MSc)
72	Veterinary public Health(MSc)
73	Veterinary Microbiology(MSc)
<b>College of Business and Economics</b>	
74	Business Administration (MBA)
<b>College of Law</b>	
75	LLM in International Economics Business Law

### 6.3.2 Regular PhD Programs

**Table 17: Regular PhD Programs**

No	Program
<b>CAES</b>	
1	Agricultural Economics
2	Agricultural Entomology
3	Agronomy
4	Animal Genetics and Breeding

5	Animal Nutrition
6	Horticulture
7	Plant Breeding
8	Plant Pathology
9	Rural Development & Agricultural Extension
10	Soil Science
11	Tropical Animal Production
12	Dairy Science
13	Dairy Technology( <i>New</i> )
14	Dryland Ecology and Biodiversity( <i>New</i> )
<b>CNCs</b>	
15	Physics
16	Microbiology( <i>New</i> )
17	Peace and Conflict Resolution( <i>New</i> )
<b>CHMS</b>	
18	Public Health
<b>IOT</b>	
19	Soil & Water Conservation Engineering
20	Irrigation Engineering

### 6.3.3 Summer Masters Programs

**Table 18: Summer Masters Programs**

No	Program
<b>College of Agriculture &amp; Environmental Sci</b>	
1	Agricultural communication & Information Management (MSc)
2	Agricultural Economics (MSc)
3	Agricultural Marketing(MSc)
4	Agronomy(MSc)
5	Animal Breeding & Genetics(MSc)
6	Animal Production (MSc)
7	Animal Nutrition(MSc)
8	Horticulture(MSc)
9	Irrigation Agronomy(MSc)
10	Integrated Pest Management(MSc)
11	Agricultural Entomology(MSc)
12	Weed Sciences(MSc)
13	Seed Sciences & Technology(MSc)
14	Soil Sciences(MSc)
15	Plant Breeding(MSc)
16	Plant pathology(MSc)
17	Rural Development (MSc)
<b>Institute of Technology</b>	
18	Food Engineering (MSc)
19	Food Sciences & Technology(MSc)
20	Irrigation Engineering(MSc)
21	Post-harvest Technology(MSc)
22	Soil & Water Conservation

<b>Engineering(MSc)</b>	
<b>College of Natural &amp; Computational Sciences</b>	
23	Applied Biology (MSc)
24	Biology Education (MEd)
25	Biotechnology(MSc)
26	Botany (MSc)
27	Chemistry(MSc)(Organic; Inorganic; Physical; Analytical streams
28	Chemistry Education (MEd)
29	Coaching Science& Rehabilitation Therapy(MSc)
30	Genetics(MSc)
31	Masters of Sciences in Biology Education (MSc)
32	Masters of Sciences in Chemistry Education (MSc)
33	Masters of Sciences in Physics Education (M.Sc.)
34	Mathematics (MSc)
35	Mathematics Education (MEd)
36	Microbiology (MSc)
37	Physics (MSc) (Environmental Physics; Quantum Physics; Computational Physics; and Medial Physics)
38	Physics Education (MEd)
39	Sport Education (MSc)
<b>College of Computing and Informatics</b>	
40	Information Sciences (MSc)
<b>College of Social Sciences &amp; Humanities</b>	
41	English (MA)
42	English Education (MEd)
43	Geography& Environmental Studies(MA)
44	Geography& Environmental Studies(MEd)
45	Sociology(MA)
<b>College of Education &amp; Behavioral Sciences</b>	
46	Educational Leadership (MA)
47	Educational Leadership and Management (MA)
48	School Leadership (MA)
<b>College of Health and Medical Sciences</b>	
49	Public Health(MPH) (General Health, Reproductive Health, Epidemiology, Health Science Management; Nutrition tracks)
50	Adult Nursing (MSc)

### 6.3.4. Continuing Education Masters Programs

**Table 19: Continuing Education Masters**

No	Program
<b>College of Agriculture &amp; Environmental Sci</b>	
1	Agricultural communication Innovation
2	Agricultural Economics (MSc)
3	Rural Development and Agricultural Economic
<b>College of Social Sciences &amp; Humanities</b>	
4	Sociology
<b>College of Education &amp; Behavioral Sciences</b>	
5	Educational Leadership (MA)
6	Educational Leadership and Management (MA)

## 7. Admission

### 7.1 Admissions to Undergraduate programs

#### **General Provisions on Admission to Undergraduate Programs**

I. Admission to all regular undergraduate programs are processed according to the University's admission policies and procedures.

II. Admissions to all undergraduate continuing, summer and distance education programs shall be processed through the Directorate for Academic Program Development and Admission taking into account the Senate's criteria applicable to the College of Continuing and Distance Education (CCDE).

III. Criteria for special admissions to individual programs shall be developed and recommended by college academic commissions and endorsed by Recruitment and Admission Committee (RAC).

IV. The University may determine special admission procedures for female students, students with disabilities and other disadvantaged groups.

V. The spouse or children of the University permanent employee, from any public university, can be transferred to and admitted into a study program of the University. However, the field of study will remain as assigned by the Ministry of Education before the transfer affected.

### 7.1.1 Admission to Regular Undergraduate Programs

Admission to the regular undergraduate degree programs of the University may be granted by the University to a candidate who fulfils the requirements specified under any one or more of the following six eligibility categories:

#### **I. Admission of Preparatory Education Completes**

Admissions to undergraduate programs of any institution from preparatory schools shall be based on completion of the preparatory program and obtaining the necessary pass marks in the Ethiopian Higher Education Entrance Examination (EHEE)

#### **II. Admission of Students with Foreign Examination Results**

Students with Foreign examination or other examinations of equivalent standard assessed by Recruitment and Admission Committee (RAC), and who passed the University Entrance Examination may be admitted into the University.

#### **III. Admission as Advanced Standing**

➤ Admission to all undergraduate degree programs with advanced standing level is processed through the Directorate for Academic Program Development and Admission and the respective Academic Commissions, and granted by the Recruitment and Admission Committee (RAC) of the University. Given the availability of places,

admission shall be on a competitive basis. Eligible applicants for advanced standing are graduates holding diplomas (2 or 3 years of college study) from accredited institutions of higher education may seek admission into the degree program of the University if they have:

- i. A minimum cumulative grade point average (CGPA/CANG) of 2.00 upon graduation;
- ii. A minimum of two years of post-diploma working experience in the intended field of study, where applicable;
- iii. Favorable recommendations from their employers, where applicable; or
- iv. Technical and vocational education and training graduates with pertinent qualifications and who satisfy entrance qualifications assessment set by the Ministry can be admitted; and
- v. Advanced standing admission is granted only during the first semester of each academic year.

### **7.1.2. Admission as Part-time Students**

*I. Part-time students are permanent University employees who are allowed to attend classes of the regular undergraduate program on a part-time basis for a degree.*

*II. Applicants must meet the admission requirements of the University, serve the University for at least two years, and must obtain the approval of the administrative department, or the college they are affiliated to, prior to*

*applying for admission to an academic program.*

*III. Final admission must be endorsed by the University Managing Council.*

*IV. A part-time student, at his final year, may be allowed to finish his study as a full-time regular student upon approval of the concerned academic units and endorsed by a concerned vice President.*

### **7.1.3. Special Admission**

*I. The University in certain circumstances may admit students jointly with other affiliated universities or institutes. Such admission may be processed at any time of the academic calendar as deemed appropriate. Students may also be admitted to more than one program at the same time. However, criteria for such special admissions to individual programs shall be developed and recommended by SC/DC and endorsed by the Admission and Placement Committee (APC).*

*II. A student who has successfully finished a set of particular modules which entitles him to a degree may also pursue other related modules and earn another degree continuously. Details guidelines shall be worked out by Academic Standard and Quality Assurance Committee (ASQAC).*

*III. Private applicants who fulfil admission requirements as regular students and produce evidence of financial support to cover full tuition fees and other expenses may apply for admission into the regular program. However, such admissions*

*should be approved by the APC.*

*IV. Under no circumstances private admissions to a regular program may exceed 5% of the total students admitted in such a programs.*

*V. Other special admission, such as people from disadvantaged areas, physically challenged people, people needing special training etc may be granted by the decisions of the University.*

*VI. Special admissions into some programs may be granted to attract potentially resourceful candidates such as mature students to the regular undergraduate programs provided that:*

➤ They have records of continuous employment for a minimum of 7 (seven) years, their works relate to the field of training to which they seek admission, and have proof of demonstrable achievement in their careers; and

➤ They pass an entrance examination to be administered by the relevant departments.

*VII. Such admission shall be granted by the University Senate.*

#### **7.1.4. Admission to the continuing and distance education programs**

Admission to all undergraduate programs of the College of the Continuing and Distance Education (continuing education, distance education and summer program) is processed by the CCDE in collaboration with the Directorate for the Academic Program Development and Admission is granted by RAC.

#### **I. Continuing Education Program**

Without any prejudice to directives given by the Ministry of Education, eligible applicants to the continuing education program of HU may fall into any one of the following four categories.

#### **Preparatory Education Completes**

- i. Applicants who have successfully completed ten-plus-two (10+2) preparatory school education;
- ii. Pass the University entrance examination; and
- iii. Sign an agreement to pay tuition and related fees to the University.

#### **Upgrading Applicants**

- i. Applicants who have ESLCE result of 2.00 and above;
- ii. Applicants with a diploma (12 + 2 or 10 + 3) and a cumulative grade point average (CGPA/CANG) of 2.00 upon graduation from an accredited higher learning institution of similar program;
- iii. Technical and vocational education and training graduates with pertinent qualifications and who satisfy entrance qualifications assessment set by the Ministry can be admitted;
- iv. Sign an agreement to pay tuition and related fees to the University; and
- v. Successfully passed University entrance examination.

#### **Non-Academic Permanent HU Employees**

- i. Applicants who have ESLCE result of 2.00 and above;
- ii. Applicants with a diploma (12 + 2 or 10 + 3) and a cumulative grade point average (CGPA/CANG) of 2.00 or its equivalent upon graduation from an accredited higher learning institution of similar program;
- iii. Technical and vocational education and training graduates with pertinent qualifications and who satisfy entrance qualifications assessment set by the Ministry can be admitted;
- iv. Served the University for at least two years;
- v. Successfully passed the University Entrance Examination;
- vi. Recommended by the concerned University administrative offices, and endorsed by the Managing Council; and
- vii. Sign an undertaking to continue to serve the University after graduation.

### **Transfer**

A student who seeks to transfer from other higher learning institutions of equivalent standard and program to the University may be granted admission to CEP if:

- i. He has successfully completed a minimum of one semester of study in an accredited institution of higher learning;
- ii. Provide a certified document from previous higher learning institution;
- iii. Meets the special requirements of the specific college and/or department he wants to join;
- iv. Sign an agreement to pay tuition and related fees to the University; and

- v. Transferable credits shall be determined by the academic commission.

### **II. Summer Program**

Eligible applicants to the Summer Program of the University may fall into any one of the following four categories:

#### **Preparatory Education Completes**

This refers to applicants who have successfully completed ten-plus-two (10 + 2) preparatory school education and passed the University Entrance Examination.

#### **Upgrading Applicants**

- i. Applicants who have ESLCE result of 2.00 and above;
- ii. Applicants with diploma (10 + 3) and a cumulative grade point average (CGPA/CANG) of 2.00 or its equivalent upon graduation from an accredited Higher Learning Institution;
- iii. Technical and vocational education and training graduates with pertinent qualifications and who satisfy entrance qualifications assessment set by the Ministry can be admitted; and
- iv. Sign an agreement to pay tuition and related fees to the University.

#### **The University Academic Technical Assistances**

- i. Served the University for at least two years;
- ii. Successfully passed the University Entrance Examination;



- iii. Recommended by their respective Department and Academic Commission, and endorsed by the Vice President for Academic Affairs;
- iv. Technical and vocational education and training graduates with pertinent qualifications and who satisfy entrance qualifications assessment set by the Ministry can be admitted; and
- v. Sign an undertaking to continue to serve the University after graduation.

### **III. Distance Education Program**

Eligible applicants to the Distance Education Program of the University may fall into any one of the following three categories.

#### **Preparatory Education Completes**

- i. Applicants who have successfully completed ten-plus-two (10 + 2) preparatory school education;
- ii. Passed the University entrance examination; and
- iii. Sign an agreement to pay tuition and related fees to the University.

#### **Upgrading Applicants**

- i. Applicants who have ESLCE result of 2.00 and above;
- ii. Applicants with diploma (12 + 2 or 10 + 3) and a cumulative grade point average (CGPA/CANG) of 2.00 or its equivalent upon graduation from an accredited higher learning institution of similar program;
- iii. Technical and vocational education and training graduates with pertinent qualifications and who satisfy entrance qualifications assessment set by the Ministry can be admitted; and

- iv. Sign an agreement to pay tuition and related fees to the University.

#### **Transfer**

- i. Student who seeks to transfer from other higher learning institutions of equivalent standard and program to the University may be granted admission to the Distance Education Program if:
  - a. He has successfully completed a minimum of one semester of study in an accredited institution of higher learning with similar academic program;
  - b. produces a certified academic record from previous higher learning institution;
  - c. Meets the special requirements of the specific college or school and/or department he wants to join;
  - d. Sign an agreement to pay tuition and related fees to the University; and
  - e. Transferable credits shall be determined by the respective Academic Commissions.

## **7.2. Admission to Graduate Programs**

### **General Provisions on Admission to Graduate Programs**

- I. Admissions to all post-graduate programs shall be processed in accordance with the provisions in this Legislation and the criteria and rules for special admissions to individual graduate programs that shall be developed and recommended by the Graduate Program Committee (GPC) with the consent of

department graduate committees and endorsed by the Graduate Program Committee (GPC) and/or the Senate.

II. Colleges with approval of the Graduate Program Committee and endorsement by the Senate may design non-thesis option graduate programs.

III. The Graduate Program Committee (GPC) shall approve admission calendar and number of graduate students to be enrolled in the different programs.

IV. Admission shall take place once in a year in a given program and modality (regular, summer, etc.).

V. A candidate with previous outstanding academic records, professional experience and good recommendations shall be given priority for admission. However, recommendations from the employer would not be required at the University level. Colleges and departments shall have the discretion to request recommendations and determine the weights to be attached to them.

VI. The University may determine special admission procedures for female students, students with disabilities, students from less developed regions, and students from nationalities with low participation in education due regard given to maintaining the standard of excellence of the University.

### **7.2.1. Admission to Regular Graduate (Masters and PhD) Programs**

#### **I. Academic Requirements**

The applicant must have completed the academic requirements for the bachelors' degree, in case of admission to master's programs, or be in possession of a master's degree in case of admission to PhD programs, from the University or any other

accredited institution of higher learning. Given the availability of places, admission to the School of Graduate Studies shall be on a competitive and competence basis.

➤ The applicant must satisfactorily pass entrance examination to be administered by the department concerned. Foreign applicants should present academic records equivalent to accredited Ethiopian Higher Learning Institutions and pass entrance examination.

➤ Senior undergraduate students of accredited universities or colleges applying to join the graduate program immediately upon graduation may be allowed to register and/or sit for entrance examinations administered by departments provided their CGPA/CANG and/or major GPA at the end of the first semester of their final year is above 2.50.

➤ The Department Graduate Committee may include additional admission requirements in conformity with University's rules and regulations and upon approval by Graduate Program Committee (GPC).

#### **II. Non-Academic Requirements**

➤ Colleges/schools/departments may, for academic reasons or special requirements of the field of study, set appropriate restrictions such as age limits subject to the approval of the Graduate Program Committee (GPC).

➤ Colleges/school/departments may also set appropriate work experience requirements after obtaining the bachelor's degrees subject to the approval of the Graduate Program Committee (GPC).

➤ Applicants shall be responsible to cover payments of tuition and thesis/dissertation research costs as per internal rules and regulations of the University.

### ***III. Special Admissions***

➤ An applicant who is found deficit in undergraduate and/or graduate courses shall be required to take remedial courses recommended by the respective DGCs.

➤ Any such student who has been recommended to take remedial courses shall be admitted as a special student.

➤ The duration of the student's, stay in the University as a special student shall be determined by the respective DGCs, but shall not exceed one academic year.

➤ A special student who has satisfactorily completed the prescribed remedial courses and passed the entrance examination shall be granted regular graduate student status.

➤ The Registrar shall record separately the results of the examinations in the prescribed remedial courses. These grades may

not count towards masters or PhD degree.

➤ The performance of the student in the prescribed remedial courses will not be considered for SGPA and/or CGPA/CANG calculation but will appear on the transcript. Such a student must obtain a cumulative grade point of at least 2.00 in the undergraduate and 3.00 for graduate courses taken, with no F grade.

➤ A special student may, upon permission of the DGC, register for and take graduate level courses for which he is qualified.

➤ An applicant who has successfully completed a semester or more graduate study in another accredited University, and meets the special requirements of the college/department may be admitted to a similar graduate program. Upon admission of such a student, the DGC shall determine the courses from which the student is to be exempted/get credit transferred. Grades for transferred courses shall be used in calculating CGPA/CANG.

### ***7.2.2. Admissions to Continuing, Distance and Summer Education Graduate Programs***

**I.** Admission requirements and procedures set for regular graduate programs are applicable to continuing,

distance, and summer education graduate programs.

## II. Illegal Admission

Securing or intending to secure admission using forged academic documents and examination results is illegal.

Securing admission by posing oneself as a student to the University system after withdrawal, dropping out or dismissal is illegal.

The discovery of the above leads to immediate and automatic dismissal from the University and liable to other legal actions.

More information on admission and transfer related information can be obtained from the university senate legislation.

## 8. Regular Students' Enrollment in 2013/14

**Table 20: University wide Students' Enrollment in 2013/14**

Degree	Sex		Total
	M	F	
<b>Regular:</b>			
<b>Undergrad.</b>	<b>12,092</b>	<b>4,079</b>	<b>16,171</b>
CAES	1,116	331	1,447
CNCS	614	421	1,035
CSSH	630	347	977
CBE	811	270	1,081
CHMS	1,763	705	2,468
CCI	836	440	1,276
IOT	4,864	1,248	6,112
COL	334	58	392
CVM	303	20	323
CEBS	134	114	248
CAiLR	687	125	812
<b>CCDE</b>			
<b>Undergrad.</b>	<b>9,961</b>	<b>4,344</b>	<b>14,305</b>
Continuing	1,333	595	1,928
Distance	3,771	2,586	6,357
Summer	4,857	1,163	6,020
<b>Regular Postgrad.</b>	<b>1,153</b>	<b>131</b>	<b>1,284</b>
Masters	897	106	1,003
PhD	256	25	281
<b>CCDE</b>			
<b>Postgrad.</b>	<b>1,654</b>	<b>77</b>	<b>1,731</b>
PGDT	612	104	716
<b>Grand Total</b>	<b>25,472</b>	<b>8,735</b>	<b>34,207</b>

### 8.1. Regular Undergraduates Enrollment Disaggregated by Departments

**Table 21: Regular CAES student enrollment**

Department	Sex		Total
	M	F	
Agri Business Management	115	23	138
Agricultural Economics	159	51	210

Animal Science	105	13	118
Environmental Science	131	42	173
Natural Resource Management	145	62	207
Plant Science	150	36	186
Range land Management & Ecotourism	105	22	127
Rural Development & Agricultural Extension	138	68	206
Mid-Career(RDAE)	68	14	82
<b>Total</b>	<b>1116</b>	<b>331</b>	<b>1447</b>

**Table 22: Regular CNCS student enrollment**

Department	Sex		Total
	M	F	
Biology	173	211	384
Chemistry	162	71	233
Mathematics	102	25	127
Physics	64	11	75
Sport Science	113	103	216
<b>Total</b>	<b>614</b>	<b>421</b>	<b>1,035</b>

**Table 23: Regular CSSH student enrollment**

Department	Sex		Total
	M	F	
Afan Oromo	96	50	146
English	49	27	76
Gender and Dev't	97	91	188
Geography and Environmental	117	35	152
History & Heritage Management	80	15	95
Sociology	115	79	194
French	21	6	27
Urban Planning	23	16	39
Geo- Information Sciences	19	10	29
Journalism	13	18	31
<b>Total</b>	<b>630</b>	<b>347</b>	<b>977</b>

**Table 24: Regular CBE student enrollments**

Department	Sex		Total
	M	F	
Accounting	258	134	392

Cooperatives	125	4	129
Economics	187	28	215
Management	133	87	220
Public Administration	108	17	125
<b>Total</b>	<b>811</b>	<b>270</b>	<b>1,081</b>

**Table 25: RegularCHMS student enrollment**

Department	Sex		Total
	M	F	
Medicine	822	387	1209
Pharmacy	131	77	208
Medical Laboratory Technician	78	25	103
Public Health	271	65	336
Psychiatric Nursing	113	13	126
Nursing	153	57	210
Midwifery	122	64	186
Environmental Health Science	73	17	90
<b>Total</b>	<b>1,763</b>	<b>705</b>	<b>2,468</b>

**Table 26: Regular CCI student enrollment**

Department	Sex		Total
	M	F	
Computer Science	142	75	217
Information Science	84	31	115
Information System	126	112	238
Information Technology	106	89	195
Management Information System	67	34	101
Software Engineering	195	53	248
Statistics	116	46	162
<b>Total</b>	<b>836</b>	<b>440</b>	<b>1,276</b>

**Table 27: Regular IOT student enrollment**

Department	Sex		Total
	M	F	
Pre-engineering	878	369	1247
Water Resource and Environmental Engineering	715	93	808
Soil and water Engineering Mgmt	331	65	396
Chemical Engineering	92	48	140
Mechanical	280	16	296

Engineering			
Food Science & postharvest Technology	211	35	246
Electrical Engineering	739	93	832
Civil Engineering	1439	510	1949
Agricultural Bio-Engineering	179	19	198
<b>Total</b>	<b>4864</b>	<b>1248</b>	<b>6112</b>

**Table 28: Regular COL student enrollment**

Department	Sex		Total
	M	F	
Law	334	58	392
<b>Total</b>	<b>334</b>	<b>58</b>	<b>392</b>

**Table 29: Regular CVM student enrollment**

Department	Sex		Total
	M	F	
Veterinary Medicine	303	20	323
<b>Total</b>	<b>303</b>	<b>20</b>	<b>323</b>

**Table 30: Regular CEBS student enrollment**

Department	Sex		Total
	M	F	
Educational Plan. & Mgt.	59	30	89
Psychology	17	26	43
Adult Education & Community Development	26	15	41
Special Needs Education	32	43	75
<b>Total</b>	<b>134</b>	<b>114</b>	<b>248</b>

**Table 31: Regular CaiLR student enrollment**

Department	Sex		Total
	M	F	
Forest Resource Management	91	20	111
Dairy & Meet Technology	74	12	86
Irrigation Engineering	189	6	195
Animal Science (DA upgrading)	41	3	44
Natural Resource Management (DA	39	5	44

upgrading)			
Plant Science (DA upgrading)	31	2	33
<b>Total</b>	<b>465</b>	<b>48</b>	<b>513</b>

**Table 32: Students enrollment in Higher Diploma program**

Department	Sex		Total
	M	F	
PGDT	612	104	716
<b>Total</b>	<b>612</b>	<b>104</b>	<b>716</b>

## 8.2 Regular Postgraduates Enrollment

### 8.2.1. Masters Programs Enrollment

**Table 33: Regular masters programs Enrollment**

M.Sc. Programs	M	F	total
<b>IOT</b>	<b>80</b>	<b>4</b>	<b>84</b>
Food Engineering	7	0	7
Food Science and Technology	23	2	25
Irrigation Engineering	30	2	32
Agricultural Engineering	9	0	9
Soil & Water Conservation Engineering	11	0	11
<b>CCI</b>	<b>32</b>	<b>0</b>	<b>32</b>
Information Science	15	0	15
Econometrics	8	0	8
Biometrics	9	0	9
<b>CNCS</b>	<b>153</b>	<b>12</b>	<b>165</b>
Biology (Microbiology)	10	3	13
Biology (Genetics)	13	3	16
Biology (Education)	1	0	1
Biotechnology	23	0	23
Chemistry	20	0	20
Chemistry (Analytic)	6	2	8
Chemistry (Inorganic)	5	0	5
Chemistry (Organic)	3	0	3
Mathematics	17	2	19
Mathematics(Numerical Analysis)	1	0	1
Physics	34	1	35
Physics (Quantum field Theory)	1	0	1
Physics (Applied Quantum	1	0	1
Sport Science	18	1	19

<b>CMHS</b>	<b>105</b>	<b>31</b>	<b>136</b>
Public Health	48	13	61
Adult Health Nursing	1	4	5
Integrated Emergency Obstetric Surgery	51	7	58
Water Supply & Sanitation Management	2	5	7
Medical Microbiology	3	2	5
<b>CAES</b>	<b>400</b>	<b>51</b>	<b>451</b>
Agricultural Economics	87	6	93
Animal Breeding and Genetics	25	1	26
Animal Nutrition	14	1	15
Dairy Science	9	4	13
Animal Science (Range Land Ecology & Management)	11	1	12
Agri. Business & Value Chain Management	7	0	7
Horticulture	2	2	4
Soil Science	29	3	32
Integrated Pest Management	2	0	2
Range Land Ecology Management	1	0	1
Seed Technology	1	0	1
Plant Breeding	29	6	35
Agronomy	35	5	40
Pathology	19	1	20
Agricultural Entomology	3	2	5
Agro metrology	7	2	9
Horticulture	18	2	20
Seed Science & Technology	6	0	6
Rural Development & Agricultural Extension (AICM)	12	1	13
Rural Development & Agricultural Extension (ACI)	1	1	2
Rural Development & Agricultural Extension (RDAE)	31	8	39
Rural Development	23	1	24
Animal Production	26	4	30
Tropical Animal Production	2	0	2
<b>CVM</b>	<b>13</b>	<b>0</b>	<b>13</b>
Veterinary Public Health	13	0	13
<b>CBE</b>	<b>10</b>	<b>1</b>	<b>11</b>
Business Administration	10	1	11

(MBA)			
<b>CSSH</b>	<b>61</b>	<b>7</b>	<b>68</b>
Environmental Science	12	0	12
Geography	12	1	13
History	4	0	4
English	6	0	6
English Education	14	0	14
Sociology	29	5	34
<b>CEBS</b>	<b>27</b>	<b>1</b>	<b>28</b>
Educational Leadership & Management	27	1	28
<b>Grand Total</b>	<b>897</b>	<b>106</b>	<b>1003</b>

### 8.2.2. PhD Programs Enrollment

**Table 34: PhD programs Enrollment**

<b>PhD. Programs</b>	<b>M</b>	<b>F</b>	<b>total</b>
<b>IOT</b>	<b>11</b>	<b>0</b>	<b>11</b>
Soil and water Eng.	7	0	7
Irrigation Engineering	4	0	4
<b>CNCS</b>	<b>1</b>	<b>0</b>	<b>1</b>
Physics	1	0	1
<b>CHMS</b>	<b>4</b>	<b>2</b>	<b>6</b>
Public Health	4	2	6
<b>CAES</b>	<b>239</b>	<b>23</b>	<b>262</b>
Agricultural Economics	58	1	59
Animal Breeding and Genetics	11	1	12
Animal Nutrition	20	2	22
Soil Science	38	2	40
Plant Breeding	19	1	20
Agronomy	34	2	36
Pathology	23	2	25
Agricultural Entomology	4	0	4
Horticulture	6	6	12
Rural Development & Agricultural Extension	3	2	5
Tropical Animal Production	21	2	23
Dairy Science	2	2	4
<b>CSSH</b>	<b>1</b>	<b>0</b>	<b>1</b>
English	1	0	1
<b>Grand Total</b>	<b>256</b>	<b>25</b>	<b>281</b>

## 9. College of Continuing and Distance Education Students' Enrollment

### 9.1. Undergraduate Enrollment in CCDE

#### 9.1.1 Distance Students Enrollment

**Table 35: DEP Students Enrollment**

Programs	M	F	T
Agricultural Economics	211	29	240
Horticulture	27	2	29
Natural Resource Management	62	2	64
Rural Development & Agricultural Extension	75	13	88
Accounting	1130	1474	2604
Economics	546	230	776
Management	1181	755	1936
Law (upgrading)	472	69	541
Law (Generic)	67	12	79
<b>Total</b>	<b>3771</b>	<b>2586</b>	<b>6357</b>

#### 9.1.2 Continuing Education Students Enrollment

**Table 36: CEP student's enrollment**

Programs	M	F	Total
Civil Engineering	287	17	304
Computer Science	40	6	46
Pharmacy	55	29	84
Nursing	157	167	324
Rural Development & Agricultural Extension	85	9	94
Accounting	325	203	528
Management	101	45	146
Public Administration & Development Management	109	4	113
Sociology	174	115	289
<b>Total</b>	<b>1333</b>	<b>595</b>	<b>1928</b>

#### 9.1.3 Summer Students Enrollment

**Table 37: SEP Students enrollment**

College/Institute	M	F	T
<b>CAES</b>	<b>283</b>	<b>39</b>	<b>322</b>
Agricultural Economics	8	1	9
Animal Science	29	3	32
Environmental Science	36	1	37
Plant Science	184	26	210
Rural Development & Agricultural Extension	26	8	34
<b>CBE</b>	<b>663</b>	<b>126</b>	<b>789</b>
Accounting	455	75	530
Cooperatives	208	51	259
<b>CMHS</b>	<b>679</b>	<b>327</b>	<b>1006</b>
Medical Laboratory Sciences	168	41	209
Nursing	347	176	523
Midwifery	130	107	237
Environmental Health Science	34	3	37
<b>CNCS</b>	<b>920</b>	<b>201</b>	<b>1121</b>
Chemistry	291	35	326
Physics	502	62	564
Sport Science	127	104	231
<b>CEBS</b>	<b>908</b>	<b>111</b>	<b>1019</b>
Educational Planning Management	778	54	832
Special Need Education	130	57	187
<b>CSSH</b>	<b>882</b>	<b>298</b>	<b>1180</b>
Geography & Environmental Studies	169	8	177
Afan Oromo	160	126	286
English	193	47	240
Gender & Development	18	82	100
Sociology	171	23	194
History & Heritage Management	171	12	183
<b>IOT</b>	<b>189</b>	<b>24</b>	<b>213</b>
Soil and Water Engineering	189	24	213
<b>CVM</b>	<b>320</b>	<b>26</b>	<b>346</b>
Veterinary Medicine	320	26	346
<b>CCI</b>	<b>13</b>	<b>11</b>	<b>24</b>
Information Technology	13	11	24
<b>Total</b>	<b>4857</b>	<b>1163</b>	<b>6020</b>



## 9.2 Postgraduate Enrollment in CCDE

**Table 38: summer and continuing postgraduate enrollment**

Program	M	F	T
Soil and water Engineering	40	0	40
Food Science and Technology	25	2	27
Information System	42	3	45
Biology	185	13	198
Chemistry	102	1	103
Mathematics	112	0	112
Physics	88	0	88
Sport Science	9	2	11
Master Public Health	37	5	42
Agricultural Economics	390	22	412
Animal and Range management	24	2	26
Plant Science	48	5	53
Agricultural Extension	79	4	83
Natural Resource Management & Environmental Science	9	0	9
Sociology	20	3	23
Environment and Land Resource Management	109	2	111

Foreign language Studies	118	6	124
Special Needs Education	217	7	224
<b>Total</b>	<b>1654</b>	<b>77</b>	<b>1731</b>

## 10. Graduation Statistics in 2013/14

**Table 39: Number of students' graduated in 2013/14**

Program	M	F	Total
<b>Postgraduates (PhD, MSc, MA, Med)</b>			
PhD	19	3	22
MSc, MA, Med	578	61	639
<b>Total</b>	<b>597</b>	<b>64</b>	<b>661</b>
<b>Undergraduates(BSc, BA, LLB, BEd)</b>			
Regular	2485	558	3043
Continuing Edu.	1308	314	1622
<b>Total</b>	<b>3793</b>	<b>872</b>	<b>4,665</b>
<b>Diploma</b>			
HDP	32	21	53
PDHET	126	117	243
Other Diploma Program	82	2	84
<b>Total</b>	<b>240</b>	<b>140</b>	<b>380</b>
<b>Grand Tota</b>	<b>4,630</b>	<b>1,076</b>	<b>5,706</b>

Partial view of the Graduation Ceremony in HU

HU 2014 *Graduation Ceremony*



The first graduates of Medical doctors at Harar Campus

## 11. Staff Profile of the University

### 11.1. Local Academic Staff of the University (on duty only) (2013/14)

**Table 40:** *Local Academic Staff of the University (on duty only)*

College Institute	TA			GA			Ass .Lec			Lecture			Asst. Pro			Asso .Pro			Professor			2006 Grand Total		
	M	F	Total	M	F	Total	M	F	Total	M	F	Total	M	F	Total	M	F	Total	M	F	Total	M	F	Total
CAES	31	1	32	15	3	18	4	2	6	75	10	85	18	1	19	19	0	19	3	0	3	165	17	182
CBE	1	0	1	6	0	6	1	0	1	46	5	51	1	0	1	0	0	0	0	0	0	55	5	60
CCI	5	2	7	18	3	21	9	1	10	24	1	25	1	0	1	1	0	1	0	0	0	58	7	65
CEBS	0	0	0	0	0	0	1	0	1	11	2	13	7	0	7	1	0	1	0	0	0	20	2	22
CAiLR	6	0	6	10	1	11	4	0	4	24	1	25	0	0	0	0	0	0	0	0	0	44	2	46
CMHS	3	2	5	13	2	15	26	7	33	121	15	136	26	0	26	1	0	1	0	0	0	190	26	216
CNCS	16	1	17	11	2	13	0	0	0	56	5	61	14	0	14	4	0	4	0	0	0	101	8	109
COL	0	0	0	0	0	0	17	6	23	10	2	12	1	0	1	0	0	0	0	0	0	28	8	36
CSSH	1	0	1	10	3	13	2	2	4	56	9	65	8	0	8	0	0	0	0	0	0	77	14	91
CVM	6	1	7	0	0	0	0	0	0	3	0	3	12	0	12	1	0	1	1	0	1	23	1	24
IOT	8	2	10	0	0	0	47	3	50	34	3	37	5	0	5	0	0	0	0	0	0	94	8	102
<b>Grand Total</b>	<b>77</b>	<b>9</b>	<b>86</b>	<b>83</b>	<b>14</b>	<b>97</b>	<b>111</b>	<b>21</b>	<b>132</b>	<b>460</b>	<b>53</b>	<b>513</b>	<b>93</b>	<b>1</b>	<b>94</b>	<b>27</b>	<b>0</b>	<b>27</b>	<b>4</b>	<b>0</b>	<b>4</b>	<b>855</b>	<b>98</b>	<b>953</b>

## 11.2 Expatriate Academic Staff of the University (2013/14)

**Table 41: Expatriate Academic Staff of the University**

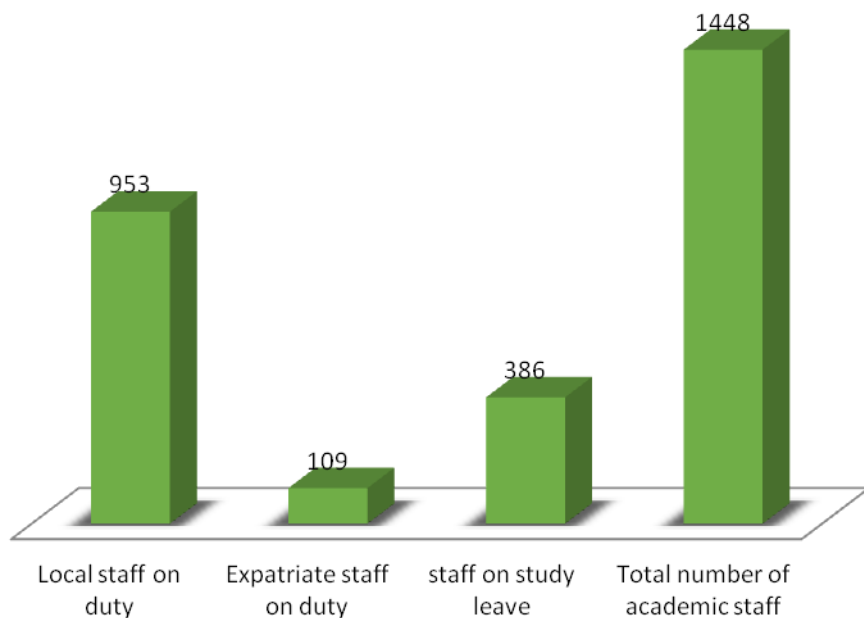
Institute/ College	Professor		Asso.Prof		Assit.Prof		Lecturer		Total		Grand
	M	F	M	F	M	F	M	F	M	F	Total
<b>CAES</b>	9	-	-	-	7	-	-	-	16	0	16
<b>CBE</b>	-	-	1	1	1	-	3	1	5	2	7
<b>CCI</b>	-	-	1	-	3	1	6	3	10	4	14
<b>CEBS</b>	-	-	-	-	3	-	-	-	3	0	3
<b>CAiLR</b>	1	-	-	-	-	-	1	-	2	0	2
<b>CMHS</b>	-	1	3	-	1	-	6	2	10	3	13
<b>CNCS</b>	7	-	2	-	7	3	-	-	16	3	19
<b>COL</b>	-	-	-	-	1	-	-	1	1	1	2
<b>CSSH</b>	1	1	2	1	3	-	2	1	8	3	11
<b>CVM</b>	1	-	-	-	3	-	-	-	4	0	4
<b>IOT</b>	3	-	1	-	1	-	10	1	15	1	16
<b>Volunteer</b>	-	-	-	-	-	-	1	1	1	1	2
<b>Total</b>	<b>22</b>	<b>2</b>	<b>10</b>	<b>2</b>	<b>30</b>	<b>4</b>	<b>29</b>	<b>10</b>	<b>91</b>	<b>18</b>	<b>109</b>

## 11.3 Academic Staffs on Study Leave (2013/14)

**Table 42: Academic staffs on study leave**

College	MSc/MA/MPH		Specialty Certificate		PhD		Total		
	M	F	M	F	M	F	M	F	Total
<b>CAES</b>	13	3	-	-	35	3	48	6	54
<b>CBE</b>	15	6	-	-	6	0	21	6	27
<b>CCI</b>	15	3	-	-	1	1	16	4	20
<b>CEBS</b>	2	1	-	-	9	0	11	1	12
<b>CAiLR</b>	26	2	-	-	3	0	29	2	31
<b>CMHS</b>	27	6	22	6	9	2	58	14	72
<b>CNCS</b>	27	3	-	-	19	3	46	6	52
<b>COL</b>	3	0	-	-	0	0	3	0	3
<b>CSSH</b>	8	3	-	-	31	0	39	3	42
<b>CVM</b>	3	0	9	0	8	1	20	1	21
<b>IOT</b>	39	3	-	-	10	0	49	3	52
<b>Total</b>	<b>178</b>	<b>30</b>	<b>31</b>	<b>6</b>	<b>131</b>	<b>10</b>	<b>340</b>	<b>46</b>	<b>386</b>

### Total number of academic staffs in 2013/14



## 11.4 Administrative Staff Profile (2013/14)

**Table 43: Permanently employed administrative staffs**

Campus	Level of Education	Sex		Total
		Male	Female	
<b>Main</b>	Phd	1	1	2
	Masters	4	0	4
	Degree	120	78	198
	Diploma	128	157	284
	Certificate	99	70	169
	9-12 Grade	341	229	570
	4-8 Grade	195	245	440
	Below 4 grade	551	644	1195
	<b>Total</b>	<b>1439</b>	<b>1424</b>	<b>2863</b>
<b>Harar</b>	Specialist	6	2	8
	Medical Doctor	3	0	3
	Degree	54	27	81
	Diploma	89	153	242
	Certificate	23	58	81
	9-12 Grade	17	29	46
	4-8 Grade	187	443	630
	<b>Total</b>	<b>379</b>	<b>712</b>	<b>1091</b>
<b>Chiro</b>	Degree	7	10	17
	Diploma	13	23	36
	Certificate	10	21	31
	9-12 Grade	28	35	63
	4-8 Grade	60	63	114
	<b>Total</b>	<b>118</b>	<b>152</b>	<b>261</b>
<b>ALL</b>	<b>Grand Total</b>	<b>1936</b>	<b>2288</b>	<b>4215</b>

\*This figure does not take in to account the temporarily employed staffs and Project staffs hired on contract basis.

## 12. HU in Research

Haramaya University is well known in advanced research & technology release especially in the field of agriculture. Research in HU has been

thematized into 6 major research themes. These are:

- Productivity, and environmental sustainability for food security, and poverty alleviation
- Human health, nutrition, and welfare
- Energy, engineering, and information technologies
- Human and social development
- Institutions, innovation systems, and economic development
- Basic science research

In the year 2013/14 more than 240 research projects was undertaken using the research funds from federal government of Ethiopia, Ethiopian agricultural research institute, SIDA, and other project.

In 2013/14, two new technologies (carrot and garlic improved seeds) have been approved by the national seed approval committee and registered for the university.

## 13. HU in Community Service

Haramaya University has been committed to deliver community service for people and institutions in the surrounding regional states including Oromiya, Somalia, Dire Dawa, Afar, and Harari regional states. Community engagement roadmap has been designed to guide the service in a better way. The University has been offering a number of need-based and effective community services in collaboration with local and international donors and other stakeholders. The major community

services being offered by the university includes:

- ❖ Agricultural technology demonstration and dissemination for farmers.

**Table 44: Number of beneficiaries from the outreach service (improved seed distributed by HU)**

Technology	District	No. of Beneficiary Farmers	Amount of seed distributed
Potato (Bubu)	Haramaya	30	959 quintal
	Kombolcha	52	
	Grawa	15	
	Others		
Maize	Habro	130	405.6 Kg
Sweet Potato	East and west Harargie, Afar		3.13 million pieces
Fertilizer	East and west Harargie	130	32.5 quintal

- ❖ Capacity building for the surrounding community, government offices including schools and health centers/hospitals. This also includes awarding scholarship for different target community members.

- ❖ Providing medical service using its own teaching hospital (Hiwot Fana) and in other hospital where our medical students are practicing, and distributing medical equipment collected from different organizations including foreign donors to the surrounding hospital and clinic. Following this, the university has been awarded a prize from Oromiya regional states in 2014 for its remarkable contribution in

reducing maternal and child mortality.

- ❖ Providing free legal service in 42 centers in the surrounding districts like East Harargie, West Harargie and Harari regional states. These centers are run by employed lawyers as well as academic staff and students of COL. The service mainly focuses on disadvantaged groups of the community such as disabled people, children, woman, people with low income and HIV exposed. The following legal services were given to the Beneficiaries in 2013/14.

**Table 45: Types of free legal services of HU and number of beneficiaries in 2013/14**

Type of Service given	Number of Beneficiaries		
	Male	Female	Total
Legal Awareness Creation	31,964	42,270	74,234
Legal Advice (Oral)	9,072	9,207	18,279
Pleadings/Petitions	4,483	6,266	10,749
Court Representation	882	871	1,753
Follow-up Cases of Prisoners /Arrested Persons	571	234	805
<b>Grand Total</b>	<b>46,972</b>	<b>58,848</b>	<b>105,820</b>



- ❖ Provide training and consultancy services for experts, entrepreneurs, and civil servants.
- ❖ Undertaking environmental conservation works.



Students in soil conservation works with the community

## 14. Sport in HU

Sport is the primary entertainment at HU. The university has constructed a huge sport academy in addition to the previous sport facilities it owned. In the year 2013/14, HU has successfully hosted the 7<sup>th</sup> Ethiopian public universities sport festival where about 34 universities have participated with their 6000 competitors competed in 12 types of sports. This was unforgettable

movement for the 21,000 spectators enjoyed the event.



Closing ceremony of the festival

## 15. University Facilities

### 15.1 Different Services

There are a number of facilities which provide service for the university community. Some of these facilities are run by private investors and others are the property of the university. The following is the list of some of these facilities.

1. 9 Libraries
2. Computer pools (both for undergraduate and post graduate students, blind students' internet center and girl's internet room)



Girl's Internet Room

3. 78 Laboratories
4. Teaching hospital (Hiwot Fana)



5. Grand convention center



6. Moot court: This is used as a practice centre for our Law students.

7. Different animal farms units used for research, teaching and income generation (dairy farm, poultry farm, goat farm, sheep farm, pig farm, fattening etc.)

**Dairy Farm**



**Poultry Farm**



**Goat Farm**



**Swine farm**



**Fattening**

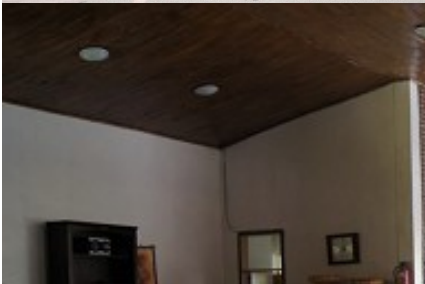


8. 10 University's Field research centers

- Kersa Demographic Research Center
- Rarie Agricultural Research Center and other centers in the main campus

- Dire Dawa Tony Farm and Research Center
- Hirna Agricultural Research Center
- Fedis Agricultural Research Center
- Earer Camel Research Center
- Babile Agricultural Research Center

9. Resource center ( which includes bed rooms, meeting halls, restaurant and other services)



10. Marketing centers (which includes supermarket, barberies, beauty salons (men and women), cafeterias, restaurants, stationary shops, gift items shops, and book shop etc. at different places of the campuses)



11. Banking services (Branch of Commercial bank of Ethiopia with ATM and Dashen Bank ATM)
12. Postal service
13. Staff Residencies



14. Model School (From Kindergarten up to Preparatory School)



15. Day care center



16. Gymnasium and other sport fields



17. Swimming pool



18. Pool houses, table tennis and other recreations centers



19. The sport academy (under construction)

20. Printing and documentation center

21. Tele education center/video conference terminals

22. University garage



23. Fuel distributing terminal

24. Slaughter house / Abattoir



25. Zoo

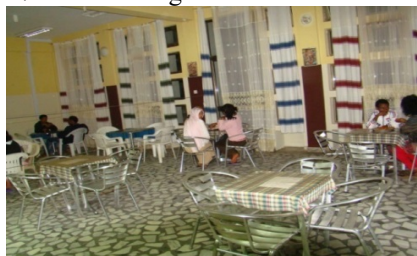


26. Auditorium(multipurpose hall)





27. Staff Lounge



28. Post Graduate Students' Lounge

29. Higher clinic



30. Pharmacy



31. Campus Police Station

32. FM Radio Station

33. Museum

## 15.2. Library and Information Services

### Library Users

HU Library is the biggest library in the eastern region of the country. Therefore, the library is rendering its services to the university community as well as external users. External users include governmental and non-governmental organizations, universities and colleges, high schools and even individuals who are working in different parts of the country. It serves 24 hours in a day and 7 days in a week.

### Seat Capacity and Collections Type

The University Libraries, which has a total seating capacity of 8,199 students at a time, has collections in different subject areas. The library also preserve some rare documents (institutional memories), and many other legal documents. HU library has been subscribing various local and international magazines and newspapers. The Library and Information Services also strives to improve its access and use of E-resources. In this regard, it became among winners of the 2013 E-resources promotion award computing with Universities and research institutions in Africa and Asia.

Table 46: *Seat Capacity and Internet Access*

<b>Name of the Library</b>	<b>Seat No.</b>
<i>Main Library</i>	<i>2759</i>
<i>School of Graduate Students Library</i>	<i>514</i>
<i>Female Students Library</i>	<i>446</i>
<i>College of Law and Social Sciences Library</i>	<i>916</i>
<i>College of Technology Library</i>	<i>714</i>
<i>Veterinary Medicine Library</i>	<i>714</i>
<i>Chiro Campus Library</i>	<i>420</i>
<i>Harar Campus Library</i>	<i>1014</i>
<i>Harar Campus SGS Library</i>	<i>702</i>
<b>Total</b>	<b>8,199</b>
<b>Computers with Internet Connections</b>	
<i>Main Library Upper</i>	<i>43</i>
<i>Main Library Basement</i>	<i>128</i>
<i>SGS Library</i>	<i>114</i>
<i>Female Students Library</i>	<i>16</i>
<b>Total</b>	<b>301</b>
<b>Wireless Internet Spots</b>	
<i>SGS Library</i>	<i>2</i>
<i>College of Law and Social Sciences Library</i>	<i>1</i>
<i>Technology Library</i>	<i>1</i>
<i>Veterinary Medicine Library</i>	<i>1</i>
<i>Main Library</i>	<i>1</i>
<b>Total</b>	<b>6</b>

### Main Library's Reading Space



### Internet services

The library has internet services for both Undergraduate and Postgraduate students. It has separate Internet rooms

for undergraduate students, postgraduate students, and female students.

### Students Internet Room (Main Library)



### Information Literacy Training

The library delivers various electronic awareness services using its local website, leaflets, posters and emails. More importantly, the Library delivers Information Literacy Training to increase access and use of various E-resources accessible in the library.

### Multimedia Services

This section provides access various supplementary notes, data, and software's to users.

### Multimedia Service Room



### Online Public Access Catalog (OPAC)

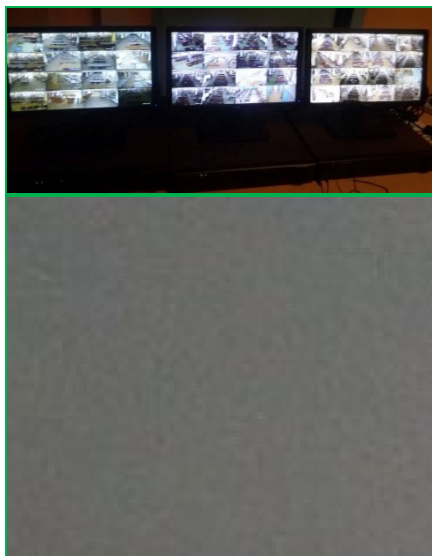
The materials in the libraries are automated. Hence, staff and students

can search the books in the library anywhere in the campus through the OPAC.

<http://opac.haramaya.edu>

### Network Security Camera System

48 Network Cameras is Installed in the Main Library. The main objective is to supervise and enhance the existing services.



### Library Security System

Theft of library materials has been a serious problem. To address the same, the library has implemented Security System, which uses state of the art technology to alert librarian in case of unauthorized checkouts of library materials.

Security System Main Library Front Gate



Library employees tagging books in the staff workstation machine



### English Reading Room

The English reading room in the main library helps to improve English language skills of students. There are more than 1600 classic literature, other types of fiction and reference books.



## E-books

The Library has made accessible 21,647 E-books in various disciplines.

## TEEAL Digital Library

We have offline access to Digital library for excellence in agricultural research and education, there is also a separate room dedicated to the services it locates on the post graduates Library. Covering mainly agriculture subjects and the journals are from reputable publishers ranging from 1993- 2012.

<ftp://tecal.haramaya.edu:210>

## E-Journals

The university regularly communicates with various donors and publishers to secure access to electronic journals for free. Currently, we have access to over 33 huge journal databases.

## Digital Library

85 % of our local digital Library project completed. It will enable full text search of our Library collections.

**Table 47: The major journal databases in the university library**

### 32 major E-resources in HU Library and Information Services

No	Resource Name	URL	Subject Strength	Authentication
1.	<b>ASCE Journals Online</b> <i>ASCE Journals Online provides unprecedented access to 32 journals encompassing more than 48,000 full-text papers published since 1983 - that's over 408,000 pages! Approximately 4000 new papers will be added each year.</i>	<a href="http://ascelibrary.org/">http://ascelibrary.org/</a>	<ul style="list-style-type: none"> <li>➤ Environmental Engineering</li> <li>➤ Architectural Engineering</li> <li>➤ Geotechnical Engineering</li> <li>➤ Construction</li> <li>➤ Earthquake Engineering</li> <li>➤ Energy</li> <li>➤ Engineering Mechanics</li> <li>➤ Water Resources Engineering</li> <li>➤ Coastline and Port Engineering</li> <li>➤ Pipelines</li> <li>➤ Structural Engineering</li> <li>➤ Transportation and Development</li> <li>➤ Sustainable Engineering</li> </ul>	IP based
2.	<b>American Chemical Society Journals and Magazines</b> <i>The American Chemical Society is the leading publisher of peer-reviewed research journals in the chemical and related sciences, serving scientific communities worldwide through an unparalleled commitment to quality, reliability, and innovation. Access is to over 35 high quality, high impact journals.</i>	<a href="http://www.acs.org/content/acs/en.html">http://www.acs.org/content/acs/en.html</a>	<ul style="list-style-type: none"> <li>➤ Agriculture</li> <li>➤ Biochemical Research Methods</li> <li>➤ Biochemistry, Molecular Biology</li> <li>➤ Biotechnology, Microbiology</li> <li>➤ Chemistry</li> <li>➤ Computer Science</li> <li>➤ Crystallography</li> <li>➤ Energy and Fuels</li> <li>➤ Chemical Engineering</li> <li>➤ Environmental Science</li> </ul>	IP based

			<ul style="list-style-type: none"> <li>➤ Food Science &amp; Technology</li> <li>➤ Materials Science</li> <li>➤ Pharmacology &amp; Pharmacy</li> <li>➤ Plant Sciences</li> <li>➤ Polymer Science</li> <li>➤ Toxicology</li> </ul>	
3.	<b>American Physical Society</b> <i>Access to the Physical Review Online Archive (PROLA) and journals produced by the American Physical Society.</i>	<a href="http://publish.aps.org/browse.html">http://publish.aps.org/browse.html</a>	<ul style="list-style-type: none"> <li>➤ Physics</li> <li>➤ Atomic, molecular and optical physics</li> <li>➤ Condensed matter and materials physics</li> <li>➤ Nuclear physics</li> <li>➤ Particles, fields, gravitation, and cosmology</li> <li>➤ Statistical, non-linear, and soft matter physics</li> <li>➤ Accelerators and beams</li> <li>➤ Physics education research</li> </ul>	IP based
4.	<b>Canadian Science Publishing (operating as NRC Research Press)</b> <i>Full text of 16 online peer-reviewed journals in a broad range of scientific disciplines with back files dating back to 2001 in most cases.</i>	<a href="http://www.nrcresearchpress.com/">http://www.nrcresearchpress.com/</a>	<ul style="list-style-type: none"> <li>➤ botany</li> <li>➤ cell biology</li> <li>➤ chemistry</li> <li>➤ civil engineering</li> <li>➤ earth science</li> <li>➤ fisheries and aquatic sciences</li> <li>➤ microbiology</li> <li>➤ physics</li> <li>➤ sport science</li> <li>➤ zoology</li> <li>➤ forestry</li> </ul>	IP based
5.	<b>EBSCO Host Research Databases</b> <i>Access to 8 major databases: Academic Search Premier; Business Source Premier; ERIC; Masterfile Premier; Newspaper Source; Health Source : Nursing &amp; Academic; Health Source : Consumer Edition; Medline.</i>	<a href="http://search.ebscohost.com/">http://search.ebscohost.com/</a>	<ul style="list-style-type: none"> <li>➤ Good coverage of most branches of social sciences and humanities</li> <li>➤ Strong business coverage</li> <li>➤ Strong nursing, medicine and allied health coverage</li> <li>➤ Dedicated newspaper database, kept separate from peer-reviewed content</li> </ul>	IP based
6.	<b>EUP Journals Online</b> <i>Edinburgh University Press publishes over 30 journals across a range of disciplines in the humanities and social sciences.</i>	<a href="http://www.euppublishing.com/">http://www.euppublishing.com/</a>	<ul style="list-style-type: none"> <li>➤ Literary Studies</li> <li>➤ Philosophy</li> <li>➤ Historical Studies</li> <li>➤ African Studies</li> <li>➤ Linguistics</li> <li>➤ Film &amp; Media Studies</li> <li>➤ Islamic &amp; Middle Eastern Studies</li> <li>➤ Politics</li> <li>➤ Law</li> <li>➤ Scottish Studies</li> </ul>	IP based
7.	<b>Emerald Management 120 eJournal Collection</b>	<a href="http://www.emeraldinsight.com/">http://www.emeraldinsight.com/</a>	<ul style="list-style-type: none"> <li>➤ Computer Science</li> <li>➤ Library and Information</li> </ul>	IP based



	<p><i>Emerald Management, features 120 Business and Management journals, all of which are peer-reviewed and fully searchable full text journals plus reviews from the world's top 300 management journals.</i></p>		<p>Sciences</p> <ul style="list-style-type: none"> <li>➤ Marketing</li> <li>➤ Management</li> </ul>	
8.	<p><b>Expanded Academic and Health &amp; Wellness Resource Center</b></p> <p><i>Expanded Academic: Unparalleled in its depth and scope, this premier database offers balanced coverage of every academic subject -- from advertising and microbiology to history and women's studies.</i></p> <p><i>Health and Wellness Resource Center: For access to authoritative health and medical information, turn to the Health &amp; Wellness Resource Center, a specialized reference tool that offers a vast collection of medical information to academic, medical and public libraries.</i></p>	<p><a href="http://www.gale.cengage.com/">http://www.gale.cengage.com/</a></p>	<ul style="list-style-type: none"> <li>➤ economics, topics in business and finance</li> <li>➤ anthropology, archeology</li> <li>➤ computing and computers</li> <li>➤ education</li> <li>➤ art, literature, music, history</li> <li>➤ international relations, law</li> <li>➤ sociology, philosophy, religion</li> <li>➤ various topics in medicine and health</li> <li>➤ STDs and AIDS</li> <li>➤ psychology and mental health</li> <li>➤ nursing</li> <li>➤ includes the BMJ and JAMA</li> </ul>	IP based
9.	<p><b>HST - The Biomedical and Life Sciences Collection</b></p> <p><i>Specially prepared, online, animated, audio-visual lectures by world leading authorities on biomedical and life sciences for researchers and university faculty members.</i></p>	<p><a href="http://www.hstalks.com/">http://www.hstalks.com/</a></p>	<ul style="list-style-type: none"> <li>➤ Biomedicine and life sciences</li> </ul>	IP based
10.	<p><b>IET Digital Library</b></p> <p><i>Over 20 Research journals and letters in electrical and electronic engineering</i></p>	<p><a href="http://www.theiet.org/">http://www.theiet.org/</a></p>	<ul style="list-style-type: none"> <li>➤ Electrical and electronic engineering</li> <li>➤ Telecommunications</li> <li>➤ Computing</li> <li>➤ Power</li> <li>➤ Control</li> <li>➤ Radar</li> <li>➤ Circuits</li> <li>➤ Materials</li> <li>➤ Life sciences related research</li> <li>➤ IT</li> </ul>	IP based
11.	<p><b>JSTOR</b></p> <p><i>An archive of over one thousand leading academic journals across the humanities, social sciences, and sciences, as well as select monographs and other materials valuable for academic work. The entire corpus is full-text searchable, offers search term highlighting, includes high-quality images, and is interlinked by millions of citations and references. The archive contains over 800 important scholarly</i></p>	<p><a href="http://www.jstor.org">http://www.jstor.org</a></p>	<ul style="list-style-type: none"> <li>➤ Economics</li> <li>➤ History</li> <li>➤ Political Science</li> <li>➤ Language &amp; Literature</li> <li>➤ Art &amp; Art History</li> <li>➤ Music</li> <li>➤ Mathematics &amp; Statistics</li> <li>➤ Education</li> </ul>	IP based

	<i>journals of high-quality, interdisciplinary content to support scholarship and teaching in 50 disciplines</i>			
12.	<b>OUP - Oxford Journals</b> <i>Oxford Journals publishes journals from science, technical, professional, medical, humanities, arts and social science disciplines.</i> <i>Organisations that qualify for the free Developing Countries Oxford Online Collection offer will obtain access to over 200 titles.</i>	<a href="http://www.oxfordjournals.org/">http://www.oxfordjournals.org/</a>	<ul style="list-style-type: none"> <li>➤ Biological Sciences</li> <li>➤ Medicine</li> <li>➤ Public Health and Epidemiology</li> <li>➤ Humanities</li> <li>➤ Social Sciences</li> <li>➤ Law</li> <li>➤ Economics, Business, and Finance</li> <li>➤ Mathematics, Statistics, Computing and Physics</li> </ul>	IP based
13.	<b>Palgrave Macmillan Journals</b> <i>Palgrave Macmillan offer a combined portfolio of over 70 peer-reviewed e-journals</i>	<a href="http://www.palgrave-journals.com/pal/index.html">http://www.palgrave-journals.com/pal/index.html</a>	<ul style="list-style-type: none"> <li>➤ business and management</li> <li>➤ economics</li> <li>➤ education</li> <li>➤ information systems and technology</li> <li>➤ political science and international studies</li> <li>➤ social and cultural studies</li> <li>➤ urban design and architecture</li> </ul>	IP based
14.	<b>Royal College of Physicians</b> <i>Clinical Medicine journal is read by leading physicians in hospitals across the world. It features articles covering original research, current issues, ethics, law, clinical governance and audit, and also reports on prestigious College lectures and conferences.</i>	<a href="http://www.clinmed.rcpjournal.org/">http://www.clinmed.rcpjournal.org/</a>	<ul style="list-style-type: none"> <li>➤ Clinical medicine</li> <li>➤ Public Health</li> </ul>	IP based
15.	<b>Royal Society for Chemistry - RSC Journals Archive</b> <i>Scientific publisher of biology, biophysics, chemical science, materials, medicinal drug discovery and physics high-impact journals and books</i>	<a href="http://pubs.rsc.org/">http://pubs.rsc.org/</a>	<ul style="list-style-type: none"> <li>➤ Biology</li> <li>➤ Biophysics</li> <li>➤ chemical science</li> <li>➤ Materials</li> <li>➤ medicinal drug discovery</li> <li>➤ physics</li> </ul>	IP based
16.	<b>Royal Society for Chemistry - RSC Journals Online</b> <i>37 full text journals spanning all branches of chemistry, plus a range of key databases in analytical chemistry, catalysts and catalysed reactions, organic synthesis and natural products plus its online series of specialist periodical reports, and a range of key databases.</i> <i>The Royal Society of Chemistry is the leading organisation in Europe for advancing the chemical sciences and is one of world's leading chemistry publishers.</i>	<a href="http://pubs.rsc.org/">http://pubs.rsc.org/</a>	<ul style="list-style-type: none"> <li>➤ All branches of chemistry including traditional fields (organic, inorganic, analytical chemistry) plus newer developments and cross-disciplinary studies such as natural products and green chemistry</li> <li>➤ Databases in analytical chemistry, catalysts and catalysed reactions, organic synthesis and natural products</li> <li>➤ Specialist reports in: amino</li> </ul>	IP based

	Supported by a network of 45,000 members worldwide and an internationally acclaimed publishing business, RSC activities span education and training, conferences and science policy and the promotion of the chemical sciences to the public.		acids, peptides and proteins, carbohydrate chemistry, monosaccharides, disaccharides and specific oligosaccharides, catalysis chemical modelling, electron paramagnetic resonance, NMR, organometallic chemistry, organophosphorus chemistry, photochemistry, spectroscopic Properties of inorganic and organometallic compounds	
17.	<b>Sage Online Journals</b> Over 550 journals in the business, humanities, social sciences and science, technology and medicine (STM)	<a href="http://www.sagepub.com">http://www.sagepub.com</a>	<ul style="list-style-type: none"> <li>➤ Humanities</li> <li>➤ Social Sciences</li> <li>➤ Scientific, Technical and Medical</li> </ul>	IP based
18.	<b>Springer eJournals</b> Springer is one of the leading international scientific publishing companies. Springer's eJournals cover a wide range of subjects including biomedicine and the life sciences, clinical medicine, physics, engineering, mathematics, computer sciences, human sciences, social sciences and economics.	<a href="http://link.springer.com/">http://link.springer.com/</a>	<ul style="list-style-type: none"> <li>➤ Engineering</li> <li>➤ Humanities, Social Sciences and Law</li> <li>➤ Mathematics and Statistics</li> <li>➤ Medicine</li> <li>➤ Physics and Astronomy</li> <li>➤</li> </ul>	IP based & Basic Subscription
19.	<b>Taylor &amp; Francis Journals</b> Provides online access to the best reference titles in the agricultural sciences in eight easily searchable resources. Featuring over 6,700 pages of printed content, these online titles allow you to explore more than 1,900 total entries from acclaimed works.	<a href="http://www.tandfonline.com">http://www.tandfonline.com</a>	<ul style="list-style-type: none"> <li>➤ Agricultural, Food, and Biological Engineering</li> <li>➤ Animal Science</li> <li>➤ Pest Management</li> <li>➤ Plant and Crop Science</li> <li>➤ Soil Science</li> <li>➤ Water Science</li> </ul>	IP based
20.	<b>University of California Press</b> Access to 33 Journals of the University of California Press.	<a href="http://www.ucpressjournals.com/">http://www.ucpressjournals.com/</a>	<ul style="list-style-type: none"> <li>➤ Area Studies</li> <li>➤ History of Science</li> <li>➤ Human research and BioEthics</li> <li>➤ Sociology</li> <li>➤ Social interaction</li> </ul>	IP based
21.	<b>ARDI</b> The Access to Research for Development and Innovation (ARDI) program is coordinated by the World Intellectual Property Organization together with its partners in the publishing industry. ARDI seeks to reinforce the capacity of developing countries to participate in the global knowledge economy; and support researchers in developing countries in creating and developing new solutions to technical challenges faced on a local and	<a href="https://ardi.wipo.int/Login/Login">https://ardi.wipo.int/Login/Login</a>	➤ Currently, 17 publishers provide access to nearly 10,000 journals, books, and reference works for 107 developing countries through ARDI.	User name: ardi-et005 Password: 8sdlk1t3v

	global level. Currently, 17 publishers provide access to nearly 10,000 journals, books, and reference works for 107 developing countries through ARDI.			
22.	<b>OARE</b> <i>Online Access to Research in the Environment (OARE), an international public-private consortium coordinated by the United Nations Environment Programme (UNEP), Yale University, and leading science and technology publishers. Over 4,150 peer reviewed titles (as of 10/2011) owned and published by over 350 prestigious publishing houses and scholarly societies.</i>	<a href="http://login.oaresciences.org/">http://login.oaresciences.org/</a>	<ul style="list-style-type: none"> <li>➤ Environmental science research</li> <li>➤ Environmental Sciences</li> <li>➤ Biological &amp; Physical Science</li> <li>➤ Social Sciences</li> <li>➤</li> </ul>	Username: ETH528 Password: 31587
23.	<b>AGORA</b> <i>access to more than 3000 journals from the world's leading academic publishers.</i>	<a href="http://www.aginternetwork.net/">http://www.aginternetwork.net/</a>	<ul style="list-style-type: none"> <li>➤ Agriculture</li> <li>➤ Biological Sciences</li> <li>➤ Environmental Sciences</li> <li>➤ social sciences</li> </ul>	Username: ag-eth010 Password: HT65fg12
24.	<b>HINARI</b> <i>More than 150 publisher partners are offering more than 37,000 information resources</i>	<a href="http://extranet.who.int/hinari/en/journals.php">http://extranet.who.int/hinari/en/journals.php</a>	<ul style="list-style-type: none"> <li>➤ Health Sciences</li> <li>➤ biomedical and related social sciences</li> </ul>	Username: ETH066 Password: ndolashe nku
25.	<b>IMF e-Library</b> <i>The International Monetary Fund's (IMF) eLibrary simplifies analysis and research with direct access to the IMF's periodicals, books, working papers and studies, and data and statistical tools</i>	<a href="http://www.elibrary.imf.org">http://www.elibrary.imf.org</a>	<ul style="list-style-type: none"> <li>➤ Macroeconomics</li> <li>➤ Globalization</li> <li>➤ Development</li> <li>➤ trade and aid</li> <li>➤ technical assistance</li> <li>➤ demographics,</li> <li>➤ emerging markets</li> <li>➤ policy advice</li> <li>➤ poverty reduction, and so much more</li> </ul>	IP based
26.	<b>Bioone</b> <i>Provides a unique aggregation of high-impact bioscience research journals, featuring timely content on a wide-array of today's most pressing topics, including global warming, stem cell research, ecological and biodiversity conservation.</i>	<a href="http://www.bioone.org/">http://www.bioone.org/</a>	<ul style="list-style-type: none"> <li>➤ global warming</li> <li>➤ stem cell research</li> <li>➤ Ecology</li> <li>➤ Biodiversity conservation....</li> </ul>	IP based
27.	<b>Annual Reviews</b> <i>Annual Reviews publications are among the most highly cited in the scientific literature, and are available in print and online to</i>	<a href="http://www.annualreviews.org/">http://www.annualreviews.org/</a>	<ul style="list-style-type: none"> <li>➤ Biomedical/life sciences</li> <li>➤ physical sciences</li> <li>➤ computer science</li> <li>➤ physics, chemistry</li> </ul>	IP based

	<i>individuals, institutions, and consortia throughout the world.</i>		<ul style="list-style-type: none"> <li>➤ social sciences</li> <li>➤ economics,</li> <li>➤ Sociology</li> <li>➤ psychology,</li> <li>➤ law</li> </ul>	
28.	<b>Cambridge Journals</b> <i>provides access to 171 journals dating between 1827 &amp; 1996.</i>	<a href="http://journals.cambridge.org">http://journals.cambridge.org</a>	<ul style="list-style-type: none"> <li>➤ Agriculture</li> <li>➤ Archaeology</li> <li>➤ Anthropology</li> <li>➤ Nutrition</li> <li>➤ Psychology and Cognitive Science etc</li> </ul>	IP based
29.	<b>Royal Society journals</b>	<a href="http://rsta.royalsocietypublishing.org">http://rsta.royalsocietypublishing.org</a> Philosophical Transactions of the Royal Society series A <a href="http://rstb.royalsocietypublishing.org">http://rstb.royalsocietypublishing.org</a> Philosophical Transactions of the Royal Society series B <a href="http://rspa.royalsocietypublishing.org">http://rspa.royalsocietypublishing.org</a> Proceedings of the Royal Society series A <a href="http://rspb.royalsocietypublishing.org">http://rspb.royalsocietypublishing.org</a> Proceedings of the Royal Society series B <a href="http://rsbl.royalsocietypublishing.org">http://rsbl.royalsocietypublishing.org</a> Biology Letters <a href="http://rsif.royalsocietypublishing.org">http://rsif.royalsocietypublishing.org</a> Journal of the Royal Society Interface <a href="http://rsfs.royalsocietypublishing.org">http://rsfs.royalsocietypublishing.org</a> Interface Focus <a href="http://rsnr.royalsocietypublishing.org">http://rsnr.royalsocietypublishing.org</a> Notes & Records of the Royal Society	<ul style="list-style-type: none"> <li>➤ physical and biological sciences</li> </ul>	IP based

30.	<b>CABI</b> <i>over 187,000 full text journal articles, reports etc in various disciplines</i>	CAB Abstracts – <a href="http://www.cabdirect.org/">http://www.cabdirect.org/</a> Crop Protection Compendium – <a href="http://www.cabi.org/cpc/">http://www.cabi.org/cpc/</a> Animal Health and Production Compendium – <a href="http://www.cabi.org/ahpc/">http://www.cabi.org/ahpc/</a> Aquaculture Compendium – <a href="http://www.cabi.org/ac/">http://www.cabi.org/ac/</a> Forestry Compendium – <a href="http://www.cabi.org/fc/">http://www.cabi.org/fc/</a>	➤ Crop Protection Compendium ➤ Animal Health and Production Compendium ➤ Aquaculture Compendium ➤ Forestry Compendium	
31.	<b>Nature journals</b>	<a href="http://www.nature.com/browse/index.html">http://www.nature.com/browse/index.html</a>	➤ Chemistry ➤ Clinical Practice & Research ➤ Earth & Environment ➤ Life Sciences ➤ Physical Sciences	IP based
32.	<b>E-books in HU Library and Information Services</b>	<a href="ftp://teel.haramaya.edu:210">ftp://teel.haramaya.edu:210</a>	<b>All subjects</b>	
<b>Other Relevant Open Resources</b>				
33.	<input type="checkbox"/> <a href="#">Freetechbooks</a> (all kinds of books) <input type="checkbox"/> <a href="#">Amigoreader</a> (all kinds of books) <input type="checkbox"/> <a href="#">Freemedicaljournals</a> <input type="checkbox"/> <a href="#">DOAJ</a> <input type="checkbox"/> <a href="#">Questia</a> <input type="checkbox"/> <a href="#">Highwire.stanford.edu</a> <input type="checkbox"/> <a href="#">legacy.intracen.org</a> <input type="checkbox"/> EIU Country Reports - in-depth analysis of political and economic trends in nearly 200 countries. Country Profiles - background and historical context of current economic and political events for over 200 countries. <input type="checkbox"/> <a href="#">African Journals Online (AJOL)</a> <input type="checkbox"/> <a href="#">Free Ebooks Library</a> <a href="http://elibrary.worldbank.org">http://elibrary.worldbank.org</a> world bank e-library			

### 15.3. About HU 91.5 FM Radio

Haramaya University's community radio, HU FM 91.5, was officially launched on June 6, 2012 with the presence of US Ambassador, Donald Booth, and Ethiopian Broadcasting Authority (EBA)

and University's officials. EBA granted Haramaya University a license to establish its own community radio on January 17, 2012. The station started its test transmission on April 5, 2012. The radio station has three permanent staff,

namely, the Station Manager, Content Editor, and Technical supervisor.

HU FM 91.5 has eight hours of transmission per day. The Amharic programs are from 12:00 am – 2:00pm and from 4:00pm – 6:00pm local time. The Afan Oromo programs are from 7:00 – 9:00 am in the morning and 6:00 – 8:00 pm local time in the evening. Some of the Programs include “Law and community”, “Belema Entertainment”, and “HU Sport”, among others.



Hu FM Station

#### 15.4. Internet Service in the University

The university is making a tremendous effort to strengthen the university ICT office and it currently provides broadband internet service for undergraduate and graduate students. Offices of the staff as well as the staff residents in the campus are also connected to the network and getting 24 hours broadband internet service. In addition, wireless internet services are also available in different places of the university.

## 16. Inventory of physical Infrastructure

**Table 48: PhD Hostels**

No.	Building No.	No. of rooms
1	Build (101-112)	12
2	Build (201-212)	12
3	Build (301-312)	12
4	Build (401-412)	12
5	Build (501-512)	12
6	Build (1-4) G+1	4
7	Build (5-8) G+1	4
8	Build (9-12) G+1	4
9	Build (13-16) G+1	4
10	1-16	4
11	101-312	12
12	Block 1-5	12
13	PhD Hostel(main campus)	60
<b>Total</b>		<b>136</b>

**Table 49: Laboratories**

No.	Building no	No. of lab
1	403	6
2	404	6
3	405	7
4	406	8
5	407	4
6	408	1
7	V	10
8	XIII	8
9	XIV	6
10	XV	6
11	COA	16
12	FVM	6
13	Health	6
<b>Total</b>		<b>90</b>

**Table 50: Classrooms and offices (Main campus)**

No	Building No.	No. of Offices	No of Lecture rooms	No of Lecture halls
1.	403	11	2	
2.	404	6	4	1
3.	405	23	2	2
4.	406	13	-	2
5.	407	23	1	2
6.	408	15	3	1
7.	SGS II	28	4	-
8.	V	18	1	2
9.	VI	19	6	-
10.	VII	12	6	
11.	VIII	-	12	-
12.	IX	15	-	-
13.	X	-	12	4
14.	XI		12	-
15.	XII	-	12	-
16.	XIII	20	-	-
17.	XIV	15	-	-
18.	XV	15	-	-
19.	COA	77	14	-
20.	FVM	15	-	-
21.	105 (hall)	-	-	1
22.	Staff office at veterinary campus	22	22	-
23.	Administration building at veterinary campus	108	54	-
24.	G <sup>+</sup> office building at main campus	132	44	-
25.	Class room at veterinary campus	-	40	-
26.	Botanical Office	10	4	-
27.	Moot court	2	4	-
<b>Total</b>		<b>325</b>	<b>259</b>	<b>15</b>

**Table 51: Dormitories in the main campus**

Dormitories	Capacity	No. of rooms	Office
Haramaya			
Building I (201)	396	33	7
Building II(202)	420	35	6
Building III	625	125	1

204White House	306	51	1
DMC 2A	424	69	2
DMC 2B	418	68	1
205-Wing A	276	69	1
205-Wing b	276	69	2
206-SGS 1	120	30	1
206-SGS 2	96	48	1
207-Twinse A	174	29	2
207-TwinseB	174	29	1
208-SAT 2A	340	68	2
208-SAT 2B	408	69	3
209-A	414	69	2
209-B	284	69	2
210 SAT-3A	284	69	1
210 SAT 3B	284	69	1
211A	284	69	2
211B	350	69	2
212A	408	68	3
212B	414	68	3
SAWA-A	234	9	-
SAWA-B	260	10	4
SAWA-C	234	9	4
SAWA-D	260	10	4
HAYAT-A	234	9	4
HAYAT-B	260	10	1
HAYAT-C	234	9	1
HAYAT-D	260	10	1
Veterinary campus	1456	364	-
IOT campus	2080	520	-
New Dormitories	500	125	-
<b>Total</b>	<b>13187</b>	<b>2427</b>	<b>66</b>

**Table 52: Staff residences (Apartment blocks)**

Building No	Number of bed rooms			
	3	2	1	0
Apart A (323)	12	-	-	-
Apart B (324)	12	-	-	-
Apart C (343)	-	12	4	-
Apart D (354)	-	12	4	-
Apart E (355)	2	4	6	3
Apart F (356)	2	4	6	3
Apart G (357)	2	4	6	3
Apart H (358)	2	4	6	3
Apart K	2	4	6	3
Apart L	2	4	6	3
Apart M	2	4	6	3



Apart I(Harar )	-	12	4	-
Apart J(Harar )	2	4	6	3
Staff Apartment	5	85	85	-
Bachelor staff Residence	1	60	60	-
<b>Total</b>	<b>46</b>	<b>213</b>	<b>213</b>	<b>24</b>

**Table 53: Staff residences (Villas)**

No.	Building	Number of buildings
1	Villas with 2 bed rooms	14
2	Villas with 3 bed rooms	22
3	Villas with 4 bed rooms	2
<b>Total</b>		<b>38</b>

**Table 54: Offices (in different places)**

No.	Building No.	Offices	No. of hall	Cafeteria
1	402	48	-	-
2	New Admin	46	1	1
3	Harar Camp	54	1	1
<b>Total</b>		<b>148</b>	<b>2</b>	<b>2</b>

**Table 55: Other small Resident structures**

No.	Building Number	Number of rooms
1	340	14
2	303	6
3	342	13
4	345	14
5	346	6
6	347	31
7	348-MT	10
8	353	9
9	AB	10
10	MW	20
<b>Total</b>		<b>153</b>

**Table 56: Infrastructures in Hiwot Fana Hospital**

No	Building No.	Number of Rooms
1.	Block A	136
2.	Block B	33
3.	Block C	4
4.	Block D	4
5.	Block E	35
6.	Block F	24
7.	Block G	19
8.	Block H	15
9.	Block I	13
10.	Block J	3
11.	Block K	8
12.	Store	2
13.	OPD	5
14.	Kitchen	4
<b>Total</b>		<b>305</b>

**Table 57: Buildings in Chiro Campus**

Building Name	Office rooms	Class rooms	Dormitories	Residence	Others
BO1	7	-	-	-	-
BO2	2	-	-	-	-
BO3	4	-	-	-	-
BO4	4	-	-	-	-
BO5	4	-	-	-	-
BC1	-	4	-	-	-
BC2	-	4	-	-	-
BC3	-	4	-	-	-
BP(Poultry & Diary house)	-	-	-	-	3
BS (Store)	-	-	-	-	2
BD1	-	-	4	-	-
BD2	-	-	4	-	-
BD3	-	-	10	-	-
BD4	-	-	10	-	-
BD5	-	-	11	-	-
BMP (Multi-Purpose)	-	-	-	-	2
BR	-	-	-	10	-
BW(Workshop)	-	-	-	-	2
Class Room	40				
<b>Total</b>	<b>21</b>	<b>52</b>	<b>39</b>	<b>10</b>	<b>9</b>

**Table 58: Additional buildings in Harar Campus**

Building Name	Office rooms	Class rooms	Dormitories	Residence	Others
Block 1	33	-	-	-	-
Block 2	-	-	-	28	-
Block 3	-	-	-	-	23
Block 4	54	-	-	-	-
Block 5	-	-	-	-	12
Block 6	-	-	40	-	-
Block 7	-	-	20	-	-
Block 8	-	-	19	-	-
Block 9	-	4	-	-	-
Block 10	20	-	-	-	-
Block 11	8	-	-	-	-
Block 12	20	-	-	-	-
Block 13	-	-	51	-	-
Block 14	-	-	51	-	-
Block 15	-	-	51	-	-
Block 16	-	4	-	-	-
Block 17	6	-	-	-	-
Block 18	-	20	-	-	-
Block 19	-	-	55	-	-
<b>Total</b>	<b>141</b>	<b>28</b>	<b>287</b>	<b>28</b>	<b>35</b>

**Table 59: Clinic**

No	Building	No of rooms	office
1	Clinic at Veterinary campus	9	1
2	Higher clinic at main campus	14	3
3	Clinic at IOT campus	9	1
4	Clinic at Chiro campus		
5	Clinic at Harar campus		

**Table 60: Other Buildings**

No	Building	capacity	no of room
1	Main Gate IOT& Veterinary Campus	-	-
2	Water Supply Expansion	1300lit	-
3	Construction of Nursery School	150	6

4	Construction of Library at model school	300	3
5	Goat shelter	200	4
6	Kitchen building at veterinary campus	-	6
7	Dinning building at veterinary campus	660	1
8	Slaughter Blocks at main campus	8	4
9	police station at main campus	-	5
10	SGS Building At Harer Campus	1310	55
11	Radio Station	-	9
12	Student lounge at IOT	100	4
13	Student lounge at veterinary	100	4
14	Store building at veterinary	-	5
15	Grand convention center at main campus		

## 17. Annual Budget from Government Treasury and its Utilization

**Table 61: Annual budget from the government treasury and its utilization in 2013/14**

<i>No</i>	<i>Program</i>	<i>Annual Budget</i>		
		<i>Budget allocated in Birr</i>	<i>Utilized Budget in Birr</i>	<i>Utilization Rate</i>
<b>1.</b>	<i>Administration</i>	204,669,900.00	221,366,483.52	108.16%
<b>2.</b>	<i>Academic</i>	177,152,900.00	165,057,951.93	93.17%
<b>3.</b>	<i>Research</i>	9,299,000.00	7,354,951.98	79.09%
<b>4.</b>	<i>Community Engagement and enterprise Development</i>	10,046,300.00	7,318,043.01	72.84%
<b>5.</b>	<i>Capital Budget</i>	844,870,013.45	844,870,013.45	100.00%
<b>Total</b>		<b>1,246,038,113.45</b>	<b>1,245,967,443.89</b>	<b>99.99%</b>



**Our Research Field**



**The Grand Convention Center**

